

Anti-TIP30 antibody [EPR13179] ab177961

重组 RabMAb

4 References 7 图像

概述	
产品名称	Anti-TIP30抗体[EPR13179]
描述	兔单克隆抗体[EPR13179] to TIP30
宿主	Rabbit
经测试应用	适用于: Flow Cyt (Intra), IP, IHC-P, WB, ICC/IF
种属反应性	与反应: Mouse, Rat, Human
免疫原	Synthetic peptide within Human TIP30 aa 50-150 (Cysteine residue). The exact sequence is proprietary. Database link: <a href="#">Q9BUP3</a>
阳性对照	HeLa, A431, and fetal liver lysates; Human pancreas and placenta tissues; A431 cells; HeLa cells.
常规说明	<p>This product is a recombinant monoclonal antibody, which offers several advantages including:</p> <ul style="list-style-type: none"><li>- High batch-to-batch consistency and reproducibility</li><li>- Improved sensitivity and specificity</li><li>- Long-term security of supply</li><li>- Animal-free production</li></ul> <p>For more information <a href="#">see here</a>.</p> <p>Our RabMAb<sup>®</sup> technology is a patented hybridoma-based technology for making rabbit monoclonal antibodies. For details on our patents, please refer to <a href="#">RabMAb<sup>®</sup> patents</a>.</p>
性能	
形式	Liquid
存放说明	Shipped at 4°C. Store at +4°C short term (1-2 weeks). Upon delivery aliquot. Store at -20°C long term. Avoid freeze / thaw cycle.
存储溶液	pH: 7.20 Preservative: 0.01% Sodium azide Constituents: 59% PBS, 40% Glycerol (glycerin, glycerine), 0.5% BSA
纯度	Protein A purified
克隆	单克隆
克隆编号	EPR13179

同种型

lgG

应用

The Abpromise guarantee

Abpromise™承诺保证使用ab177961于以下的经测试应用

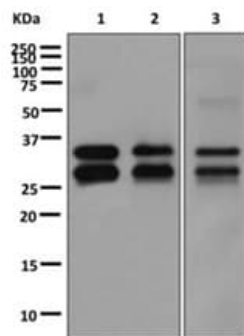
“应用说明”部分 下显示的仅为推荐的起始稀释度;实际最佳的稀释度/浓度应由使用者检定。

应用	Ab评论	说明
Flow Cyt (Intra)		1/10 - 1/100. <b>ab172730</b> - Rabbit monoclonal IgG, is suitable for use as an isotype control with this antibody.
IP		1/10 - 1/100.
IHC-P		1/50 - 1/100. Perform heat mediated antigen retrieval via the pressure cooker method before commencing with IHC staining protocol.
WB		1/1000 - 1/10000. Predicted molecular weight: 27 kDa.
ICC/IF		1/50 - 1/100.

靶标

功能	Oxidoreductase required for tumor suppression. NADPH-bound form inhibits nuclear import by competing with nuclear import substrates for binding to a subset of nuclear transport receptors. May act as a redox sensor linked to transcription through regulation of nuclear import. Isoform 1 is a metastasis suppressor with proapoptotic as well as antiangiogenic properties. Isoform 2 has an antiapoptotic effect.
组织特异性	Ubiquitous. Highest level in liver. High levels in lung, skeletal muscle, pancreas and placenta. Moderate levels in heart and kidney. Low levels in brain. Not expressed or low levels in variant small cell lung carcinomas, 33% of hepatocellular carcinomas and neuroblastomas.
结构域	Unique C-terminus confers high proteasome-dependent instability to isoform 2.
细胞定位	Cytoplasm. Nucleus envelope.

图片



Western blot - Anti-TIP30 antibody [EPR13179]  
(ab177961)

**All lanes :** Anti-TIP30 antibody [EPR13179] (ab177961) at 1/1000 dilution

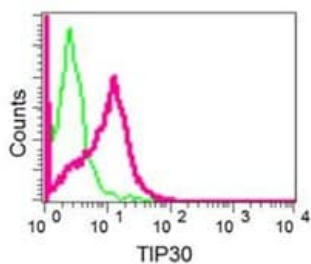
**Lane 1 :** HeLa cell lysate

**Lane 2 :** A431 cell lysate

**Lane 3 :** Fetal liver lysate

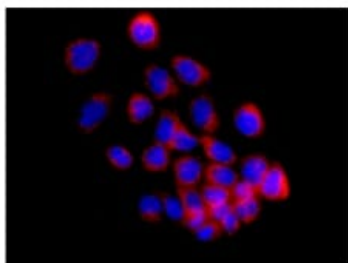
Lysates/proteins at 10 µg per lane.

**Predicted band size:** 27 kDa



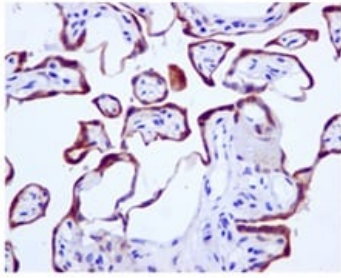
Flow Cytometry (Intracellular) - Anti-TIP30 antibody  
[EPR13179] (ab177961)

Intracellular flow cytometric analysis of permeabilized HeLa cells labeling TIP30 using ab177961 at 1/10 dilution (red) or a rabbit IgG (negative) (green).



Immunocytochemistry/ Immunofluorescence - Anti-TIP30 antibody [EPR13179] (ab177961)

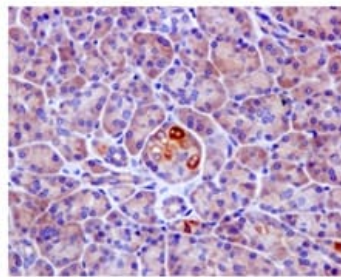
Immunofluorescence analysis of A431 cells labeling TIP30 using ab177961 at 1/50 dilution.



Immunohistochemistry (Formalin/PFA-fixed paraffin-embedded sections) - Anti-TIP30 antibody [EPR13179] (ab177961)

Immunohistochemical analysis of Human placenta tissue labeling TIP30 using ab177961 at 1/50 dilution.

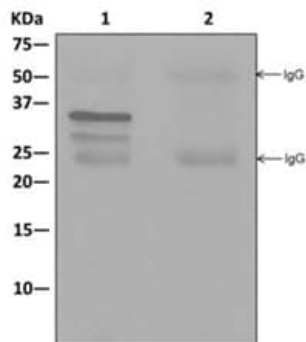
Perform heat mediated antigen retrieval via the pressure cooker method before commencing with IHC staining protocol.



Immunohistochemistry (Formalin/PFA-fixed paraffin-embedded sections) - Anti-TIP30 antibody [EPR13179] (ab177961)

Immunohistochemical analysis of Human pancreas tissue labeling TIP30 using ab177961 at 1/50 dilution.

Perform heat mediated antigen retrieval via the pressure cooker method before commencing with IHC staining protocol.



Immunoprecipitation - Anti-TIP30 antibody [EPR13179] (ab177961)

Western blot analysis on immunoprecipitation pellet from (1) HeLa cell lysate or (2) 1XPBS (negative control) using ab177961 at 1/10 dilution to immunoprecipitate TIP30, and HRP-conjugated anti-rabbit IgG preferentially detecting the non-reduced form of rabbit IgG.

### Why choose a recombinant antibody?



**Research with confidence**  
Consistent and reproducible results



**Long-term and scalable supply**  
Recombinant technology



**Success from the first experiment**  
Confirmed specificity



**Ethical standards compliant**  
Animal-free production

Anti-TIP30 antibody [EPR13179] (ab177961)

**Please note:** All products are "FOR RESEARCH USE ONLY. NOT FOR USE IN DIAGNOSTIC PROCEDURES"

### Our Abpromise to you: Quality guaranteed and expert technical support

---

- Replacement or refund for products not performing as stated on the datasheet
- Valid for 12 months from date of delivery
- Response to your inquiry within 24 hours
- We provide support in Chinese, English, French, German, Japanese and Spanish
- Extensive multi-media technical resources to help you
- We investigate all quality concerns to ensure our products perform to the highest standards

If the product does not perform as described on this datasheet, we will offer a refund or replacement. For full details of the Abpromise, please visit <https://www.abcam.cn/abpromise> or contact our technical team.

### Terms and conditions

---

- Guarantee only valid for products bought direct from Abcam or one of our authorized distributors