




Anti-TIMP2 antibody ab180630

★★★★★ [1 Abreviews](#) [52 References](#) [1 图像](#)

概述

产品名称	Anti-TIMP2抗体
描述	兔多克隆抗体to TIMP2
宿主	Rabbit
经测试应用	适用于: WB, ICC/IF, IHC-P
种属反应性	与反应: Mouse, Rat, Human 预测可用于: Rabbit, Guinea pig, Cow, Dog, Chinese hamster 
免疫原	Recombinant full length protein corresponding to Human TIMP2 aa 27-220. Mature protein. Sequence: CSCSPVHPQQAFCNADVIRAKAVSEKEVDSGNDIYGNIPIKR IQYEIKQI KMFKGPEKDIEFIYTAPSSAVCGVSLDVGGKKEYLIAGKAEG DGKMHITL CDFIVPWDTLSTTQKKSLNHRYQMGCECKITRCPMIPCYISS PDECLWMD WVTEKNINGHQAKFFACIKRSDGSCAWYRG AAPPKQEFLDIEDP Database link: P16035  Run BLAST with  Run BLAST with

常规说明

The Life Science industry has been in the grips of a reproducibility crisis for a number of years. Abcam is leading the way in addressing this with our range of recombinant monoclonal antibodies and knockout edited cell lines for gold-standard validation. Please check that this product meets your needs before purchasing.

If you have any questions, special requirements or concerns, please send us an inquiry and/or contact our Support team ahead of purchase. Recommended alternatives for this product can be found below, along with publications, customer reviews and Q&As

性能

形式	Liquid
存放说明	Shipped at 4°C. Store at +4°C short term (1-2 weeks). Upon delivery aliquot. Store at -20°C long term. Avoid freeze / thaw cycle.
存储溶液	pH: 7.30

	Preservative: 0.02% Sodium azide
	Constituents: 50% Glycerol, 49% PBS
纯度	Protein A purified
克隆	多克隆
同种型	IgG

应用

The Abpromise guarantee Abpromise™ 承诺保证使用ab180630于以下的经测试应用

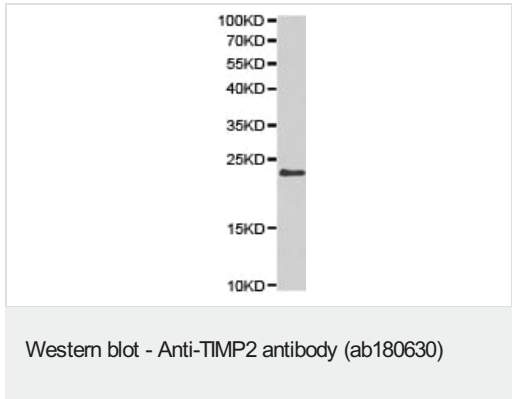
“应用说明”部分 下显示的仅为推荐的起始稀释度;实际最佳的稀释度/浓度应由使用者检定。

应用	Ab评论	说明
WB		1/500 - 1/2000. Predicted molecular weight: 24 kDa.
ICC/IF		Use at an assay dependent concentration.
IHC-P		Use at an assay dependent concentration. ab171870 - Rabbit polyclonal IgG, is suitable for use as an isotype control with this antibody.

靶标

功能	Complexes with metalloproteinases (such as collagenases) and irreversibly inactivates them by binding to their catalytic zinc cofactor. Known to act on MMP-1, MMP-2, MMP-3, MMP-7, MMP-8, MMP-9, MMP-10, MMP-13, MMP-14, MMP-15, MMP-16 and MMP-19.
序列相似性	Belongs to the protease inhibitor I35 (TIMP) family. Contains 1 NTR domain.
翻译后修饰	The activity of TIMP2 is dependent on the presence of disulfide bonds.
细胞定位	Secreted.

图片



Anti-TIMP2 antibody (ab180630) at 1/500 dilution + SW480 cell line extract

Predicted band size: 24 kDa

Please note: All products are "FOR RESEARCH USE ONLY. NOT FOR USE IN DIAGNOSTIC PROCEDURES"

Our Abpromise to you: Quality guaranteed and expert technical support

- Replacement or refund for products not performing as stated on the datasheet
- Valid for 12 months from date of delivery
- Response to your inquiry within 24 hours
- We provide support in Chinese, English, French, German, Japanese and Spanish
- Extensive multi-media technical resources to help you
- We investigate all quality concerns to ensure our products perform to the highest standards

If the product does not perform as described on this datasheet, we will offer a refund or replacement. For full details of the Abpromise, please visit <https://www.abcam.cn/abpromise> or contact our technical team.

Terms and conditions

- Guarantee only valid for products bought direct from Abcam or one of our authorized distributors