



Anti-TIMM17B antibody ab122034

4 图像

概述

产品名称	Anti-TIMM17B抗体
描述	兔多克隆抗体to TIMM17B
宿主	Rabbit
经测试应用	适用于: IHC-P, WB
种属反应性	与反应: Human
免疫原	antigen sequence: ILLALIEGVG ILLTRYTAQQ FRNAPPFLED PSQLPPKDGT PAPGYPSYQQ YH, corresponding to C terminal amino acids 121-172 of Human TIMM17B.  Run BLAST with ExPASy  Run BLAST with NCBI
阳性对照	IHC: Human duodenum, placenta, and kidney tissue WB: Lysate from RT4 and U-251 MG cells.
常规说明	<p>The Life Science industry has been in the grips of a reproducibility crisis for a number of years. Abcam is leading the way in addressing this with our range of recombinant monoclonal antibodies and knockout edited cell lines for gold-standard validation. Please check that this product meets your needs before purchasing.</p> <p>If you have any questions, special requirements or concerns, please send us an inquiry and/or contact our Support team ahead of purchase. Recommended alternatives for this product can be found below, along with publications, customer reviews and Q&As</p>

性能

形式	Liquid
存放说明	Shipped at 4°C. Upon delivery aliquot and store at -20°C. Avoid freeze / thaw cycles.
存储溶液	pH: 7.20 Preservative: 0.02% Sodium azide Constituents: 59% PBS, 40% Glycerol (glycerin, glycerine)
纯度	Immunogen affinity purified
克隆	多克隆
同种型	IgG

应用

The Abpromise guarantee

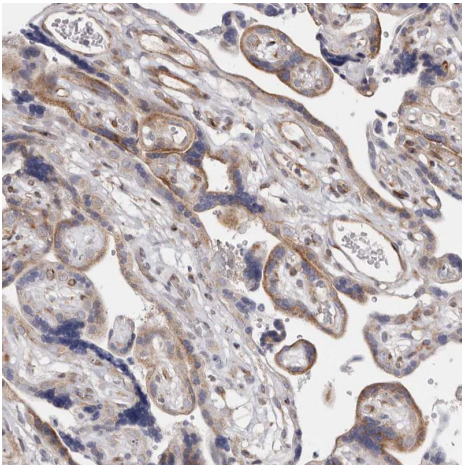
Abpromise™承诺保证使用ab122034于以下的经测试应用

“应用说明”部分 下显示的仅为推荐的起始稀释度;实际最佳的稀释度/浓度应由使用者检定。

应用	Ab评论	说明
IHC-P		1/50 - 1/200. Perform heat mediated antigen retrieval with citrate buffer pH 6 before commencing with IHC staining protocol.
WB		Use a concentration of 0.04 - 0.4 µg/ml.

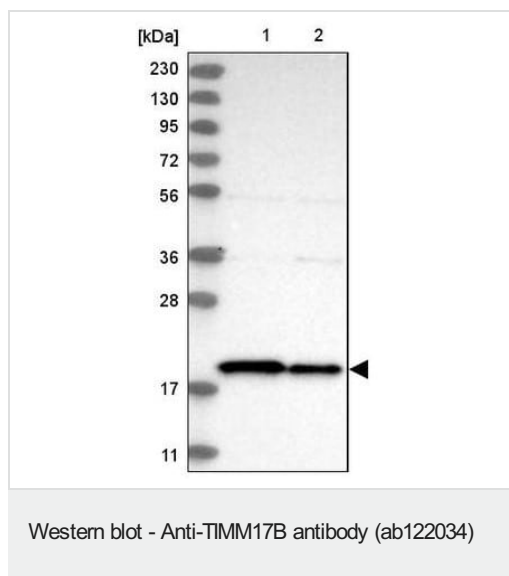
靶标	
功能	Essential component of the TIM23 complex, a complex that mediates the translocation of transit peptide-containing proteins across the mitochondrial inner membrane.
组织特异性	Expression is abundant in heart and skeletal muscle, intermediate in brain, and weak in pancreas, placenta, kidney and liver.
序列相似性	Belongs to the Tim17/Tim22/Tim23 family.
细胞定位	Mitochondrion inner membrane.

图片



Immunohistochemistry (Formalin/PFA-fixed paraffin-embedded sections) analysis of human placenta tissue labelling TIMM17B with ab122034 at 1/50 dilution. Heat mediated antigen retrieval performed with citrate buffer pH 6 before commencing with IHC staining protocol.

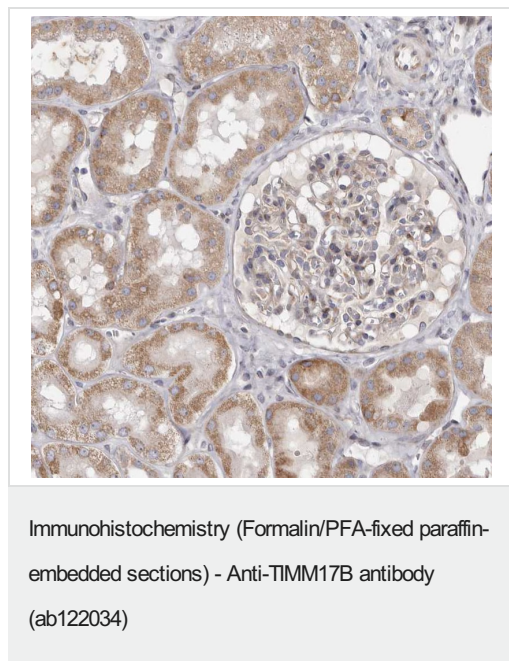
Immunohistochemistry (Formalin/PFA-fixed paraffin-embedded sections) - Anti-TIMM17B antibody (ab122034)



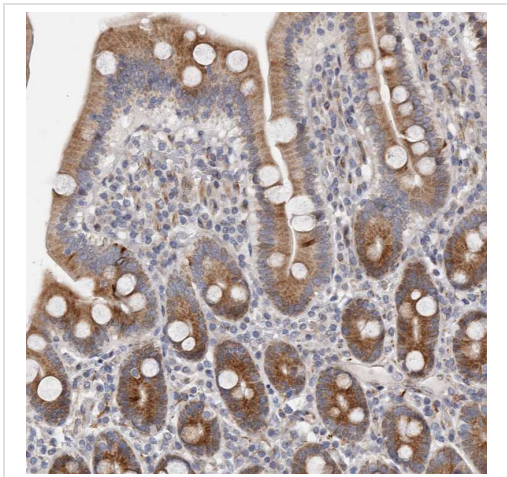
All lanes : Anti-TIMM17B antibody (ab122034) at 0.4 µg/ml

Lane 1 : RT4 (human urinary bladder cancer cell line) cell lysate

Lane 2 : U-251 MG (formally U-373 MG) (human brain glioma cell line) cell lysate



ab122034 at 1/85 dilution staining TIMM17B in paraffin-embedded Human kidney tissue by Immunohistochemistry.



ab122034 at 1/85 dilution staining TIMM17B in paraffin-embedded Human duodenum tissue by Immunohistochemistry.

Immunohistochemistry (Formalin/PFA-fixed paraffin-embedded sections) - Anti-TIMM17B antibody (ab122034)

Please note: All products are "FOR RESEARCH USE ONLY. NOT FOR USE IN DIAGNOSTIC PROCEDURES"

Our Abpromise to you: Quality guaranteed and expert technical support

- Replacement or refund for products not performing as stated on the datasheet
- Valid for 12 months from date of delivery
- Response to your inquiry within 24 hours
- We provide support in Chinese, English, French, German, Japanese and Spanish
- Extensive multi-media technical resources to help you
- We investigate all quality concerns to ensure our products perform to the highest standards

If the product does not perform as described on this datasheet, we will offer a refund or replacement. For full details of the Abpromise, please visit <https://www.abcam.cn/abpromise> or contact our technical team.

Terms and conditions

- Guarantee only valid for products bought direct from Abcam or one of our authorized distributors