


Anti-TIM50 antibody [EPR5785] ab109436

重组 RabMAb

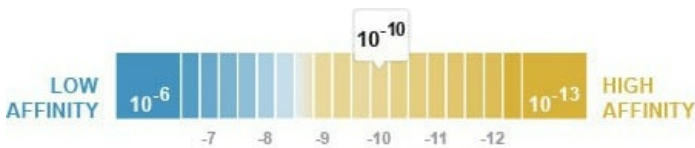
★★★★★ 2 Abreviews 5 References 3 图像

概述

产品名称	Anti-TIM50抗体[EPR5785]
描述	兔单克隆抗体[EPR5785] to TIM50
宿主	Rabbit
经测试应用	适用于: WB 不适用于: Flow Cyt, ICC/IF or IHC-P
种属反应性	与反应: Human 预测可用于: Mouse, Rat 
免疫原	Synthetic peptide. This information is proprietary to Abcam and/or its suppliers.
阳性对照	293T, SH-SY5Y, HepG2, and HeLa whole cell lysate ( <a href="#">ab150035</a> )
常规说明	<p>This product is a recombinant monoclonal antibody, which offers several advantages including:</p> <ul style="list-style-type: none"><li>- High batch-to-batch consistency and reproducibility</li><li>- Improved sensitivity and specificity</li><li>- Long-term security of supply</li><li>- Animal-free production</li></ul> <p>For more information <a href="#">see here</a>.</p> <p>Our RabMAb<sup>®</sup> technology is a patented hybridoma-based technology for making rabbit monoclonal antibodies. For details on our patents, please refer to <a href="#">RabMAb<sup>®</sup> patents</a>.</p>

性能

形式	Liquid
存放说明	Shipped at 4°C. Upon delivery aliquot and store at -20°C. Avoid freeze / thaw cycles.
解离常数 (K <sub>D</sub> )	K <sub>D</sub> = 1.56 x 10 <sup>-10</sup> M



[Learn more about K<sub>D</sub>](#)

存储溶液	pH: 7.20
------	----------

**纯度**

## 克隆

克隆编号

**同种型**

## 应用

## The Abpromise guarantee

**“应用说明”部分 下显示的仅为推荐**

应用	Ab评论	说明
WB	★★★★★ (1)	1/1000 - 1/10000. Predicted molecular weight: 40 kDa.

### 应用说明

### 靶标

## 功能

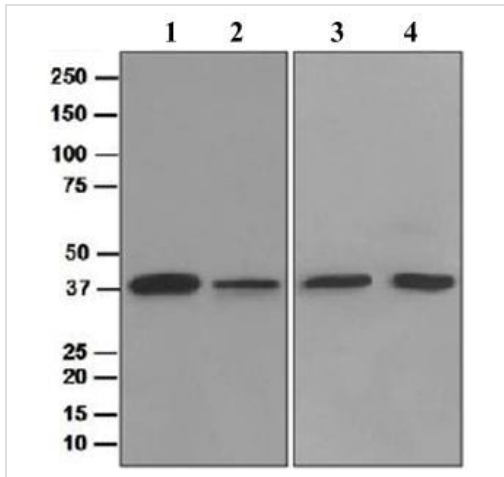
### 组织特异性

## 序列相似性

## 结构域

### 细胞定位

图片



Western blot - Anti-TIM50 antibody [EPR5785]  
(ab109436)

**All lanes** : Anti-TIM50 antibody [EPR5785] (ab109436) at 1/1000 dilution

**Lane 1** : HEK-293T (Human epithelial cell line from embryonic kidney transformed with large T antigen) whole cell lysate

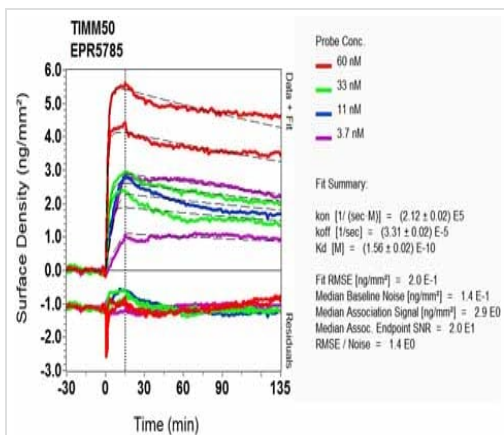
**Lane 2** : SH-SY5Y (Human neuroblastoma cell line from bone marrow) whole cell lysate

**Lane 3** : Hep G2 (Human liver hepatocellular carcinoma cell line) whole cell lysate

**Lane 4** : HeLa (Human cervix adenocarcinoma epithelial cell) whole cell lysate

Lysates/proteins at 10 µg per lane.

**Predicted band size:** 40 kDa



SPR Scanning - Anti-TIM50 antibody [EPR5785]  
(ab109436)

Equilibrium dissociation constant ( $K_D$ )

Learn more about  $K_D$

[Click here to learn more about  \$K\_D\$](#)

### Why choose a recombinant antibody?



**Research with confidence**  
Consistent and reproducible results



**Long-term and scalable supply**  
Recombinant technology



**Success from the first experiment**  
Confirmed specificity



**Ethical standards compliant**  
Animal-free production

Anti-TIM50 antibody [EPR5785] (ab109436)

**Please note:** All products are "FOR RESEARCH USE ONLY. NOT FOR USE IN DIAGNOSTIC PROCEDURES"

### Our Abpromise to you: Quality guaranteed and expert technical support

---

- Replacement or refund for products not performing as stated on the datasheet
- Valid for 12 months from date of delivery
- Response to your inquiry within 24 hours
- We provide support in Chinese, English, French, German, Japanese and Spanish
- Extensive multi-media technical resources to help you
- We investigate all quality concerns to ensure our products perform to the highest standards

If the product does not perform as described on this datasheet, we will offer a refund or replacement. For full details of the Abpromise, please visit <https://www.abcam.cn/abpromise> or contact our technical team.

### Terms and conditions

---

- Guarantee only valid for products bought direct from Abcam or one of our authorized distributors