

Anti-TIM 1 antibody ab78494

★★★★☆ [2 Abreviews](#) [10 References](#) [3 图像](#)

概述

产品名称	Anti-TIM 1抗体
描述	兔多克隆抗体to TIM 1
宿主	Rabbit
经测试应用	适用于: WB, IHC-P
种属反应性	与反应: Mouse, Human
免疫原	Synthetic peptide, corresponding to a portion of the amino acids 200-300 of Human TIM 1
阳性对照	Testis tissue
常规说明	<p>The Life Science industry has been in the grips of a reproducibility crisis for a number of years. Abcam is leading the way in addressing this with our range of recombinant monoclonal antibodies and knockout edited cell lines for gold-standard validation. Please check that this product meets your needs before purchasing.</p> <p>If you have any questions, special requirements or concerns, please send us an inquiry and/or contact our Support team ahead of purchase. Recommended alternatives for this product can be found below, along with publications, customer reviews and Q&As</p>

性能

形式	Liquid
存放说明	Shipped at 4°C. Upon delivery aliquot and store at -20°C. Avoid freeze / thaw cycles.
存储溶液	Preservative: 0.05% Sodium azide Constituents: 0.05% BSA, PBS
纯度	Protein G purified
克隆	多克隆
同种型	IgG

应用

The Abpromise guarantee [Abpromise™](#) 承诺保证使用ab78494于以下的经测试应用

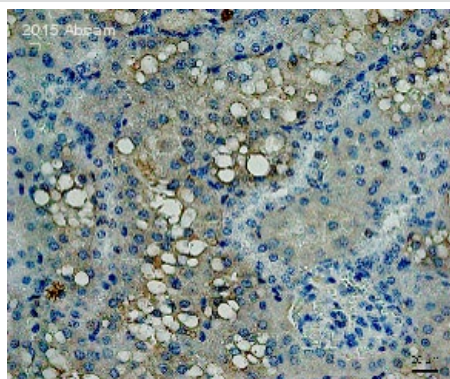
“应用说明”部分下显示的仅为推荐的起始稀释度;实际最佳的稀释度/浓度应由使用者检定。

应用	Ab评论	说明
WB	★★★★★ (1)	Use a concentration of 1 - 3 µg/ml. Predicted molecular weight: 39 kDa.
IHC-P	★★★★★ (1)	Use a concentration of 2.5 - 5 µg/ml.

靶标

功能	May play a role in T-helper cell development and the regulation of asthma and allergic diseases. Receptor for TIMD4 (By similarity). In case of human hepatitis A virus (HHAV) infection, functions as a cell-surface receptor for the virus. May play a role in kidney injury and repair.
组织特异性	Widely expressed, with highest levels in kidney and testis. Expressed by activated CD4+ T-cells during the development of helper T-cells responses.
序列相似性	Belongs to the immunoglobulin superfamily. TIM family. Contains 1 Ig-like V-type (immunoglobulin-like) domain.
细胞定位	Membrane.

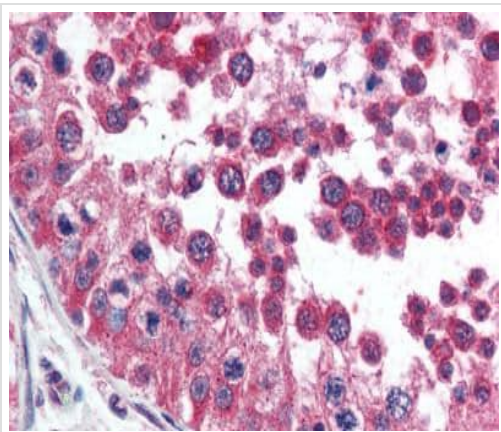
图片



Immunohistochemical analysis of Formaldehyde-fixed murine obese nephric tissue sections, labelling TIM 1 with ab78494 at a dilution of 1/2500 incubated for 12 hours at 4°C in PBS and 2.5% Horse serum. Heat mediated antigen retrieval was with Citrate buffer. Blocking was with 2.5% horse serum incubated for 1 hour at 25°C. Secondary was a horse anti-rabbit polyclonal HRP conjugate used undiluted. Counterstaining against nuclear DNA was with DAPI.

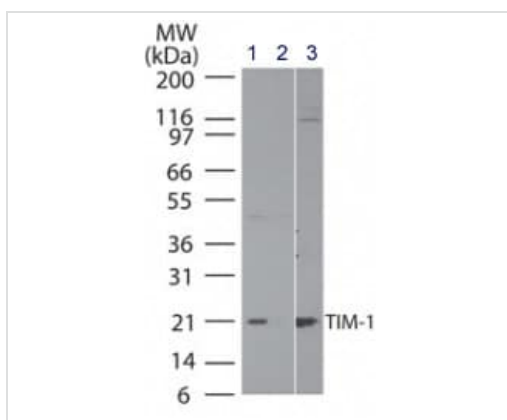
Immunohistochemistry (Formalin/PFA-fixed paraffin-embedded sections) - Anti-TIM 1 antibody (ab78494)

Image is courtesy of an anonymous AbReview.



Immunohistochemistry (Formalin/PFA-fixed paraffin-embedded sections) - Anti-TIM 1 antibody (ab78494)

Immunohistochemical analysis of formalin-fixed, paraffin-embedded Human testis tissue, staining TIM 1 with ab78494 at 5 µg/ml.



Western blot - Anti-TIM 1 antibody (ab78494)

All lanes : Anti-TIM 1 antibody (ab78494) at 3 µg/ml

Lane 1 : Human brain lysate

Lane 2 : Human brain lysate in presence of immunizing peptide

Lane 3 : Mouse brain lysate

Predicted band size: 39 kDa

Please note: All products are "FOR RESEARCH USE ONLY. NOT FOR USE IN DIAGNOSTIC PROCEDURES"

Our Abpromise to you: Quality guaranteed and expert technical support

- Replacement or refund for products not performing as stated on the datasheet
- Valid for 12 months from date of delivery
- Response to your inquiry within 24 hours
- We provide support in Chinese, English, French, German, Japanese and Spanish
- Extensive multi-media technical resources to help you
- We investigate all quality concerns to ensure our products perform to the highest standards

If the product does not perform as described on this datasheet, we will offer a refund or replacement. For full details of the Abpromise, please visit <https://www.abcam.cn/abpromise> or contact our technical team.

Terms and conditions

- Guarantee only valid for products bought direct from Abcam or one of our authorized distributors