


Anti-TIM 1 antibody [2B9] ab66062

★★★★★ [1 Abreviews](#) [3 References](#) [1 图像](#)

概述

产品名称	Anti-TIM 1抗体[2B9]
描述	小鼠单克隆抗体[2B9] to TIM 1
宿主	Mouse
经测试应用	适用于: WB
种属反应性	与反应: Human 预测可用于: Chimpanzee 
免疫原	Recombinant fragment with tag: KVGGEAGPSV TLPCHYSGAV TSMCWNRGSC SLFTCQNGV WTNGTHVTYR KDTRYKLLGD LSRRDVSLTI ENTAVSDSGV YCCRVEHRGW FNDMKITVSL, corresponding to amino acids 23-123 of Human TIM 1 Run BLAST with ExPASy Run BLAST with NCBI
阳性对照	TIM 1 transfected 293T cell lysate.
常规说明	<p>This product was changed from ascites to tissue culture supernatant on 24th June 2019. Please note that the dilutions may need to be adjusted accordingly. If you have any questions, please do not hesitate to contact our scientific support team.</p> <p>The Life Science industry has been in the grips of a reproducibility crisis for a number of years. Abcam is leading the way in addressing this with our range of recombinant monoclonal antibodies and knockout edited cell lines for gold-standard validation. Please check that this product meets your needs before purchasing.</p> <p>If you have any questions, special requirements or concerns, please send us an inquiry and/or contact our Support team ahead of purchase. Recommended alternatives for this product can be found below, along with publications, customer reviews and Q&As</p>

性能

形式	Liquid
存放说明	Shipped at 4°C. Upon delivery aliquot and store at -20°C or -80°C. Avoid repeated freeze / thaw cycles.
存储溶液	pH: 7.4 Constituent: PBS
纯度	Tissue culture supernatant
克隆	单克隆

克隆编号2B9

同种型IgG2a

应用

The Abpromise guarantee **Abpromise™**承诺保证使用ab66062于以下的经测试应用

“应用说明”部分 下显示的仅为推荐的起始稀释度;实际最佳的稀释度/浓度应由使用者检定。

应用	Ab评论	说明
WB		Use at an assay dependent concentration. Detects a band of approximately 36 kDa (predicted molecular weight: 39 kDa).

靶标

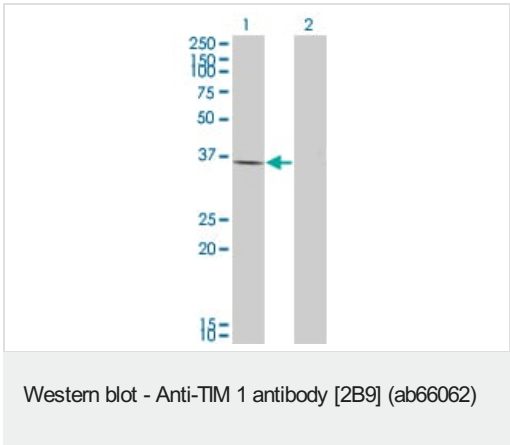
功能 May play a role in T-helper cell development and the regulation of asthma and allergic diseases. Receptor for TIMD4 (By similarity). In case of human hepatitis A virus (HHAV) infection, functions as a cell-surface receptor for the virus. May play a role in kidney injury and repair.

组织特异性 Widely expressed, with highest levels in kidney and testis. Expressed by activated CD4+ T-cells during the development of helper T-cells responses.

序列相似性 Belongs to the immunoglobulin superfamily. TIM family. Contains 1 Ig-like V-type (immunoglobulin-like) domain.

细胞定位 Membrane.

图片



All lanes : Anti-TIM 1 antibody [2B9] (ab66062) at 1 µg/ml

Lane 1 : TIM 1 transfected 293T cell lysate

Lane 2 : Non-transfected 293T cell lysate

Lysates/proteins at 50 µg per lane.

Secondary

All lanes : Goat Anti-Mouse IgG at 1/2500 dilution

Predicted band size: 39 kDa

Observed band size: 36 kDa

This image was generated using the ascites version of the product.

Please note: All products are "FOR RESEARCH USE ONLY. NOT FOR USE IN DIAGNOSTIC PROCEDURES"

Our Abpromise to you: Quality guaranteed and expert technical support

- Replacement or refund for products not performing as stated on the datasheet
- Valid for 12 months from date of delivery
- Response to your inquiry within 24 hours

- We provide support in Chinese, English, French, German, Japanese and Spanish
- Extensive multi-media technical resources to help you
- We investigate all quality concerns to ensure our products perform to the highest standards

If the product does not perform as described on this datasheet, we will offer a refund or replacement. For full details of the Abpromise, please visit <https://www.abcam.cn/abpromise> or contact our technical team.

Terms and conditions

- Guarantee only valid for products bought direct from Abcam or one of our authorized distributors