

Anti-TIL/TLR1 antibody [EPR2075] ab68158

重组 RabMAb

1 References **4 图像**

概述

产品名称	Anti-TIL/TLR1抗体[EPR2075]
描述	兔单克隆抗体[EPR2075] to TIL/TLR1
宿主	Rabbit
经测试应用	适用于: WB, IP, Flow Cyt 不适用于: ICC/IF or IHC-P
种属反应性	与反应: Human
免疫原	Synthetic peptide within Human TIL/TLR1 aa 150-250 (extracellular). The exact sequence is proprietary.
阳性对照	WB: Daudi and Ramos cell lysates. Flow Cyt: Daudi cells. IP: Ramos cell lysate.
常规说明	This product is a recombinant monoclonal antibody, which offers several advantages including: <ul style="list-style-type: none"> - High batch-to-batch consistency and reproducibility - Improved sensitivity and specificity - Long-term security of supply - Animal-free production For more information see here . Our RabMAb [®] technology is a patented hybridoma-based technology for making rabbit monoclonal antibodies. For details on our patents, please refer to RabMAb[®] patents . Mouse, Rat: We have preliminary internal testing data to indicate this antibody may not react with these species. Please contact us for more information.

性能

形式	Liquid
存放说明	Shipped at 4°C. Upon delivery aliquot and store at -20°C. Avoid freeze / thaw cycles.
存储溶液	pH: 7.2 Preservative: 0.01% Sodium azide Constituents: 9% PBS, 40% Glycerol (glycerin, glycerine), 0.05% BSA, 50% Tissue culture supernatant
纯度	Protein A purified

克隆	单克隆
克隆编号	EPR2075
同种型	IgG

应用

The Abpromise guarantee **Abpromise™**承诺保证使用ab68158于以下的经测试应用

“应用说明”部分 下显示的仅为推荐的起始稀释度;实际最佳的稀释度/浓度应由使用者检定。

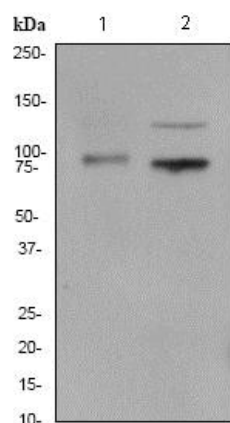
应用	Ab评论	说明
WB		
IP		
Flow Cyt		

应用说明	<p>Flow Cyt: 1/60.</p> <p>IP: 1/40.</p> <p>WB: 1/1000 - 1/2000. Detects a band of approximately 90 and 125 kDa (predicted molecular weight: 90 kDa).</p> <p>Is unsuitable for ICC or IHC-P.</p> <p>Not yet tested in other applications.</p> <p>Optimal dilutions/concentrations should be determined by the end user.</p>
------	--

靶标

功能	Participates in the innate immune response to microbial agents. Cooperates with TLR2 to mediate the innate immune response to bacterial lipoproteins or lipopeptides. Acts via MYD88 and TRAF6, leading to NF-kappa-B activation, cytokine secretion and the inflammatory response.
组织特异性	Ubiquitous. Highly expressed in spleen, ovary, peripheral blood leukocytes, thymus and small intestine.
序列相似性	<p>Belongs to the Toll-like receptor family.</p> <p>Contains 12 LRR (leucine-rich) repeats.</p> <p>Contains 1 LRRCT domain.</p> <p>Contains 1 TIR domain.</p>
细胞定位	Cell membrane. Cytoplasmic vesicle > phagosome membrane.

图片



Western blot - Anti-TIL/TLR1 antibody [EPR2075]
(ab68158)

All lanes : Anti-TIL/TLR1 antibody [EPR2075] (ab68158) at 1/1000 dilution

Lane 1 : Daudi cell lysate

Lane 2 : Ramos cell lysate

Lysates/proteins at 10 µg per lane.

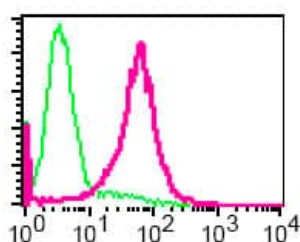
Secondary

All lanes : HRP labelled goat anti-rabbit at 1/2000 dilution

Predicted band size: 90 kDa

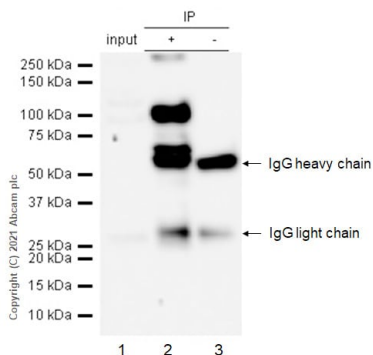
Observed band size: 90 kDa

Additional bands at: 125 kDa. We are unsure as to the identity of these extra bands.



Flow Cytometry - Anti-TIL/TLR1 antibody [EPR2075]
(ab68158)

Flow cytometric analysis of TIL/TLR1 in Daudi cells using ab68158 at 1/60 dilution (pink) or a rabbit IgG (green).



Immunoprecipitation - Anti-TIL/TLR1 antibody
[EPR2075] (ab68158)

TIL/TLR1 was immunoprecipitated from 0.35 mg Ramos (Human Burkitt's lymphoma B lymphocyte) whole cell lysate 10 µg with ab68158 at 1/50 dilution (2µg). VeriBlot for IP Detection Reagent (HRP)([ab131366](#)) was used at 1/5000 dilution.

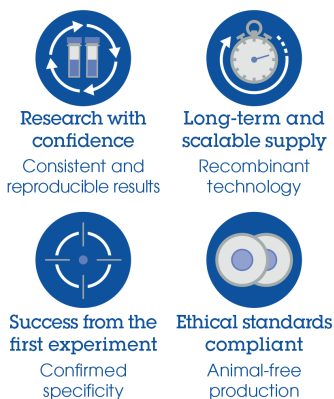
Lane 1: Ramos (Human Burkitt's lymphoma B lymphocyte) whole cell lysate 10 µg

Lane 2: ab68158 IP in Ramos whole cell lysate

Lane 3: Rabbit monoclonal IgG ([ab172730](#)) instead of ab68158 in Ramos whole cell lysate

Blocking and dilution buffer and concentration: 5% NFDm/TBST.

Why choose a recombinant antibody?



Anti-TIL/TLR1 antibody [EPR2075] (ab68158)

Please note: All products are "FOR RESEARCH USE ONLY. NOT FOR USE IN DIAGNOSTIC PROCEDURES"

Our Abpromise to you: Quality guaranteed and expert technical support

- Replacement or refund for products not performing as stated on the datasheet
- Valid for 12 months from date of delivery
- Response to your inquiry within 24 hours
- We provide support in Chinese, English, French, German, Japanese and Spanish
- Extensive multi-media technical resources to help you
- We investigate all quality concerns to ensure our products perform to the highest standards

If the product does not perform as described on this datasheet, we will offer a refund or replacement. For full details of the Abpromise, please visit <https://www.abcam.cn/abpromise> or contact our technical team.

Terms and conditions

- Guarantee only valid for products bought direct from Abcam or one of our authorized distributors