

### Anti-TIGAR antibody ab37910

★★★★★ [3 Abreviews](#) [27 References](#) [2 图像](#)

#### 概述

产品名称	Anti-TIGAR抗体
描述	兔多克隆抗体to TIGAR
宿主	Rabbit
经测试应用	适用于: IHC-P, ICC/IF, WB
种属反应性	与反应: Human
免疫原	Synthetic peptide corresponding to Human TIGAR aa 100-200 conjugated to keyhole limpet haemocyanin. (Peptide available as <a href="#">ab37909</a> )
阳性对照	Recombinant Human TIGAR protein ( <a href="#">ab115509</a> ) can be used as a positive control in WB. This antibody gave a positive signal in the following whole cell lysates: HeLa (Human epithelial carcinoma cell line) Jurkat (Human T cell lymphoblast-like cell line) A431 (Human epithelial carcinoma cell line) HEK 293 (Human embryonic kidney cell line) HepG2 (Human hepatocellular liver carcinoma cell line) MCF-7 (Human breast adenocarcinoma cell line)
常规说明	<p>The Life Science industry has been in the grips of a reproducibility crisis for a number of years. Abcam is leading the way in addressing this with our range of recombinant monoclonal antibodies and knockout edited cell lines for gold-standard validation. Please check that this product meets your needs before purchasing.</p> <p>If you have any questions, special requirements or concerns, please send us an inquiry and/or contact our Support team ahead of purchase. Recommended alternatives for this product can be found below, along with publications, customer reviews and Q&amp;As</p>

#### 性能

形式	Liquid
存放说明	Shipped at 4°C. Store at +4°C short term (1-2 weeks). Upon delivery aliquot. Store at -20°C or -80°C. Avoid freeze / thaw cycle.
存储溶液	<p>pH: 7.40</p> <p>Preservative: 0.02% Sodium azide</p> <p>Constituent: PBS</p> <p>Batches of this product that have a concentration &lt; 1mg/ml may have BSA added as a stabilising agent. If you would like information about the formulation of a specific lot, please contact our</p>

scientific support team who will be happy to help.

纯度

Immunogen affinity purified

克隆

多克隆

同种型

IgG

## 应用

### The Abpromise guarantee

**Abpromise™**承诺保证使用ab37910于以下的经测试应用

“应用说明”部分 下显示的仅为推荐的起始稀释度;实际最佳的稀释度/浓度应由使用者检定。

应用	Ab评论	说明
IHC-P	★★★★★ (1)	Use at an assay dependent concentration.
ICC/IF	★★★★★ (1)	Use a concentration of 1 µg/ml.
WB	★★★★★ (1)	1/250. Detects a band of approximately 30 kDa (predicted molecular weight: 30 kDa).

## 靶标

### 功能

Probable fructose-biphosphatase. Lowers cellular levels of fructose 2,6-bisphosphate. Protects cells against reactive oxygen species and against apoptosis induced by p53/TP53.

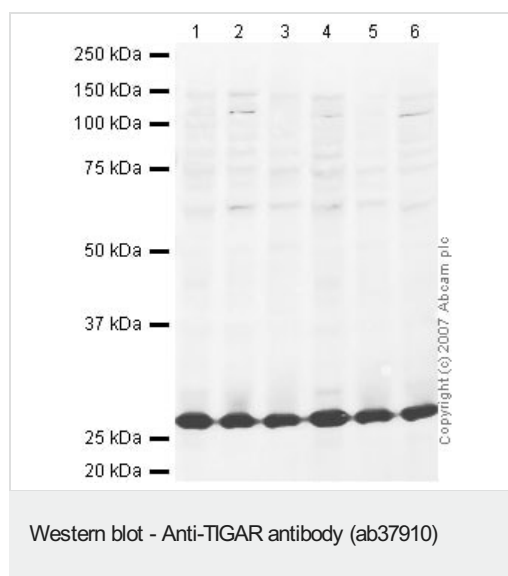
### 序列相似性

Belongs to the phosphoglycerate mutase family.

### 翻译后修饰

Phosphorylated upon DNA damage, probably by ATM or ATR.

## 图片



**All lanes :** Anti-TIGAR antibody (ab37910) at 1/250 dilution

**Lane 1 :** HeLa (Human epithelial carcinoma cell line) Whole Cell Lysate

**Lane 2 :** Jurkat whole cell lysate ([ab7899](#))

**Lane 3 :** A-431 whole cell lysate ([ab7909](#))

**Lane 4 :** HEK-293 whole cell lysate ([ab7902](#))

**Lane 5 :** Hep G2 whole cell lysate ([ab7900](#))

**Lane 6 :** MCF-7 (Human breast adenocarcinoma cell line) Whole Cell Lysate

Lysates/proteins at 10 µg per lane.

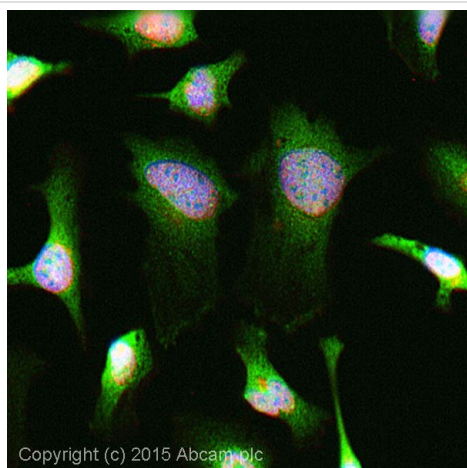
### Secondary

**All lanes :** IRDye 680 Conjugated Goat Anti-Rabbit IgG (H+L) at 1/10000 dilution

Performed under reducing conditions.

**Predicted band size:** 30 kDa

**Observed band size:** 30 kDa



Immunocytochemistry/ Immunofluorescence - Anti-TIGAR antibody (ab37910)

ICC/IF image of ab37910 stained HeLa cells. The cells were 4% formaldehyde fixed (10 min) then permeabilised using 0.1% PBS-Triton and then incubated in 1%BSA / 10% normal goat serum / 0.3M glycine in 0.1% PBS-Tween for 1h to further permeabilise the cells and block non-specific protein-protein interactions. The cells were then incubated with the antibody ab37910 at 1µg/ml overnight at +4°C. The secondary antibody (pseudo-colored green) was Alexa Fluor® 488 goat anti- rabbit (**ab150081**) IgG (H+L) preadsorbed, used at a 1/1000 dilution for 1h. Alexa Fluor® 594 WGA was used to label plasma membranes (pseudo-colored red) at a 1/200 dilution for 1h at room temperature. DAPI was used to stain the cell nuclei (pseudo-colored blue) at a concentration of 1.43µM for 1 hour at room temperature.

**Please note:** All products are "FOR RESEARCH USE ONLY. NOT FOR USE IN DIAGNOSTIC PROCEDURES"

### Our Abpromise to you: Quality guaranteed and expert technical support

- Replacement or refund for products not performing as stated on the datasheet
- Valid for 12 months from date of delivery
- Response to your inquiry within 24 hours
- We provide support in Chinese, English, French, German, Japanese and Spanish
- Extensive multi-media technical resources to help you
- We investigate all quality concerns to ensure our products perform to the highest standards

If the product does not perform as described on this datasheet, we will offer a refund or replacement. For full details of the Abpromise, please visit <https://www.abcam.cn/abpromise> or contact our technical team.

### Terms and conditions

- Guarantee only valid for products bought direct from Abcam or one of our authorized distributors