

### Anti-TICAM2 antibody [mAbcam77169] ab77169

#### 2 图像

#### 概述

产品名称	Anti-TICAM2抗体[mAbcam77169]
描述	小鼠单克隆抗体[mAbcam77169] to TICAM2
宿主	Mouse
经测试应用	适用于: WB, Flow Cyt (Intra)
种属反应性	与反应: Human
免疫原	Synthetic peptide corresponding to Human TICAM2 aa 200 to the C-terminus conjugated to keyhole limpet haemocyanin. (Peptide available as <a href="#">ab57980</a> )
阳性对照	Recombinant Human TICAM2 protein ( <a href="#">ab123160</a> ) can be used as a positive control in WB. This antibody gave a positive signal in Human Kidney and Human Spleen Tissue Lyates
常规说明	<p>This antibody clone is manufactured by Abcam. If you require a custom buffer formulation or conjugation for your experiments, please contact <a href="mailto:orders@abcam.com">orders@abcam.com</a>.</p> <p>The Life Science industry has been in the grips of a reproducibility crisis for a number of years. Abcam is leading the way in addressing this with our range of recombinant monoclonal antibodies and knockout edited cell lines for gold-standard validation. Please check that this product meets your needs before purchasing.</p> <p>If you have any questions, special requirements or concerns, please send us an inquiry and/or contact our Support team ahead of purchase. Recommended alternatives for this product can be found below, along with publications, customer reviews and Q&amp;As</p>

#### 性能

形式	Liquid
存放说明	Shipped at 4°C. Upon delivery aliquot and store at -20°C or -80°C. Avoid repeated freeze / thaw cycles.
存储溶液	pH: 7.40 Preservative: 0.02% Sodium azide
纯度	IgG fraction
克隆	单克隆
克隆编号	mAbcam77169

骨髓瘤 Sp2/0-Ag14  
同种型 IgG1

应用

The Abpromise guarantee **Abpromise™**承诺保证使用ab77169于以下的经测试应用

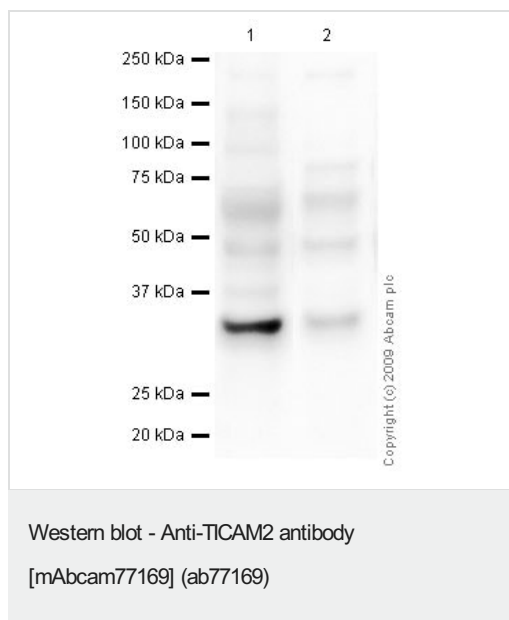
“应用说明”部分 下显示的仅为推荐的起始稀释度;实际最佳的稀释度/浓度应由使用者检定。

应用	Ab评论	说明
WB		Use a concentration of 10 µg/ml. Detects a band of approximately 32 kDa (predicted molecular weight: 27 kDa).
Flow Cyt (Intra)		Use 1µg for 10 <sup>6</sup> cells. <b>ab170190</b> - Mouse monoclonal IgG1, is suitable for use as an isotype control with this antibody.

靶标

功能	Functions in LPS-TLR4 signaling to regulate the MYD88-independent pathway during the innate immune response to LPS. Also involved in IL 1-triggered NF-kappa-B activation, functioning upstream of IRAK1, IRAK2, TRAF6, and IKBKB. Physically bridges TLR4 and TICAM1 and functionally transmits LPS-TRL4 signal to TICAM1.
组织特异性	Expressed in spleen, prostate, testis, uterus, small intestine, colon, peripheral blood leukocytes, heart, placenta, lung, liver, skeletal muscle, and pancreas.
序列相似性	Contains 1 TIR domain.
结构域	The TIR domain mediates the interaction with TRAF6.
翻译后修饰	Phosphorylated by PKCE in response to LPS. Phosphorylation is essential for its function. It is depleted from the membrane upon phosphorylation. Myristoylated. Required for membrane association which is critical for its ability to initiate efficient signaling.
细胞定位	Cytoplasm. Golgi apparatus. Cell membrane. Localized to the plasma membrane as a result of myristoylation. Phosphorylation on Ser-16 leads to its depletion from the membrane.

图片



**All lanes :** Anti-TICAM2 antibody [mAbcam77169] (ab77169) at 10 µg/ml

**Lane 1 :** Human kidney tissue lysate - total protein ([ab30203](#))

**Lane 2 :** Human spleen tissue lysate - total protein ([ab29699](#))

Lysates/proteins at 20 µg per lane.

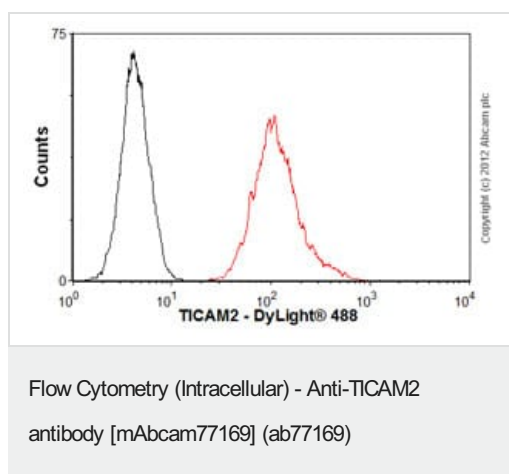
### Secondary

**All lanes :** Goat polyclonal to Mouse IgG - H&L - Pre-Adsorbed (HRP) at 1/3000 dilution

Performed under reducing conditions.

**Predicted band size:** 27 kDa

**Observed band size:** 32 kDa



Overlay histogram showing PC3 cells stained with ab77169 (red line). The cells were fixed with 80% methanol (5 min) and then permeabilized with 0.1% PBS-Tween for 20 min. The cells were then incubated in 1x PBS / 10% normal goat serum / 0.3M glycine to block non-specific protein-protein interactions. The cells were then incubated with the antibody (ab77169, 1 µg/1x10<sup>6</sup> cells) for 30 min at 22°C. The secondary antibody used was DyLight® 488 goat anti-mouse IgG (H+L) ([ab96879](#)) at 1/500 dilution for 30 min at 22°C. Isotype control antibody (black line) was mouse IgG1 [ICIGG1] ([ab91353](#), 2 µg/1x10<sup>6</sup> cells) used under the same conditions. Acquisition of >5,000 events was performed.

**Please note:** All products are "FOR RESEARCH USE ONLY. NOT FOR USE IN DIAGNOSTIC PROCEDURES"

**Our Abpromise to you: Quality guaranteed and expert technical support**

- Replacement or refund for products not performing as stated on the datasheet
- Valid for 12 months from date of delivery
- Response to your inquiry within 24 hours
- We provide support in Chinese, English, French, German, Japanese and Spanish
- Extensive multi-media technical resources to help you
- We investigate all quality concerns to ensure our products perform to the highest standards

If the product does not perform as described on this datasheet, we will offer a refund or replacement. For full details of the Abpromise, please visit <https://www.abcam.cn/abpromise> or contact our technical team.

#### **Terms and conditions**

---

- Guarantee only valid for products bought direct from Abcam or one of our authorized distributors