

# Anti-Thymidylate Synthase antibody ab7398

[7 References](#) [1 图像](#)

### 概述

---

产品名称	Anti-Thymidylate Synthase抗体
描述	羊多克隆抗体to Thymidylate Synthase
宿主	Sheep
经测试应用	适用于: WB
种属反应性	与反应: Human 不与反应: Saccharomyces cerevisiae
免疫原	Recombinant full length protein corresponding to Human Thymidylate Synthase. Produced in E.coli. Database link: <a href="#">P04818</a>
常规说明	<p>The antibody recognizes the expected additional band corresponding to the ternary complex of human TS-dFUMP-reduced folate in HeLa cells treated with the TS inhibitor 5-FUdR. This event occurs in most human breast, colorectal, gastric, head and neck carcinomas. The antibody recognizes 36 kDa human TS.</p> <p>The Life Science industry has been in the grips of a reproducibility crisis for a number of years. Abcam is leading the way in addressing this with our range of recombinant monoclonal antibodies and knockout edited cell lines for gold-standard validation. Please check that this product meets your needs before purchasing.</p> <p>If you have any questions, special requirements or concerns, please send us an inquiry and/or contact our Support team ahead of purchase. Recommended alternatives for this product can be found below, along with publications, customer reviews and Q&amp;As</p>

### 性能

---

形式	Liquid
存放说明	Shipped at 4°C. Store at +4°C short term (1-2 weeks). Upon delivery aliquot. Store at -20°C or -80°C. Avoid freeze / thaw cycle.
存储溶液	Preservative: 0.01% Sodium azide Constituents: 0.42% Potassium phosphate, 0.87% Sodium chloride
纯度	IgG fraction
克隆	多克隆
同种型	IgG

## 应用

**The Abpromise guarantee**      **Abpromise™**承诺保证使用ab7398于以下的经测试应用

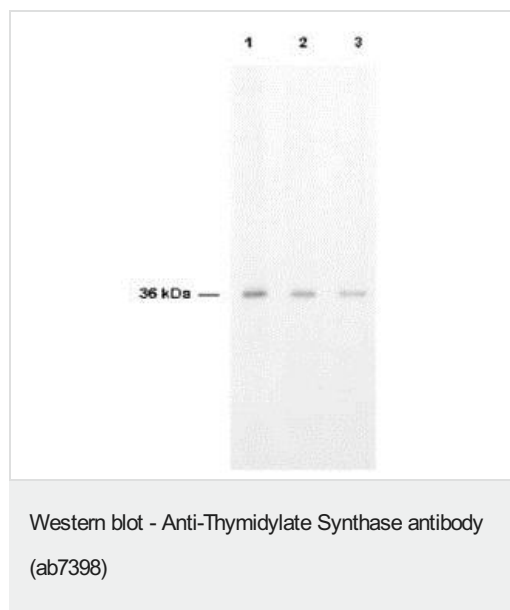
“应用说明”部分 下显示的仅为推荐的起始稀释度;实际最佳的稀释度/浓度应由使用者检定。

应用	Ab评论	说明
WB		Use at an assay dependent concentration. Predicted molecular weight: 37 kDa.

## 靶标

功能	Contributes to the de novo mitochondrial thymidylate biosynthesis pathway.
通路	Pyrimidine metabolism; dTTP biosynthesis.
序列相似性	Belongs to the thymidylate synthase family.
细胞定位	Nucleus. Cytoplasm. Mitochondrion. Mitochondrion matrix. Mitochondrion inner membrane.

## 图片



ab7398 is shown to detect thymidylate synthase present in a HeLa cell extract. Each lane is estimated to contain 4 µg of protein. Lanes 1, 2 and 3 represent 1/2000, 1/5000 and 1/10000 fold dilutions of the antibody. Detection was made using HRP Rabbit-a-Sheep IgG diluted 1/1000 and color development using TMB substrate for approximately 4'.

**Please note:** All products are "FOR RESEARCH USE ONLY. NOT FOR USE IN DIAGNOSTIC PROCEDURES"

## Our Abpromise to you: Quality guaranteed and expert technical support

- Replacement or refund for products not performing as stated on the datasheet
- Valid for 12 months from date of delivery
- Response to your inquiry within 24 hours
- We provide support in Chinese, English, French, German, Japanese and Spanish

- Extensive multi-media technical resources to help you
- We investigate all quality concerns to ensure our products perform to the highest standards

If the product does not perform as described on this datasheet, we will offer a refund or replacement. For full details of the Abpromise, please visit <https://www.abcam.cn/abpromise> or contact our technical team.

### **Terms and conditions**

---

- Guarantee only valid for products bought direct from Abcam or one of our authorized distributors