

# Anti-Thrombomodulin antibody [EPR4051] - Low endotoxin, Azide free ab222292

重组 RabMAb

12 图像

### 概述

产品名称	Anti-Thrombomodulin抗体[EPR4051] - Low endotoxin, Azide free
描述	兔单克隆抗体[EPR4051] to Thrombomodulin - Low endotoxin, Azide free
宿主	Rabbit
经测试应用	适用于: Flow Cyt (Intra), WB, IHC-P, ICC/IF, IP
种属反应性	与反应: Human
免疫原	Synthetic peptide. This information is proprietary to Abcam and/or its suppliers.
阳性对照	THP-1, Human placenta and Human heart lysates; Human placenta tissue, Human squamous cervical carcinoma tissue; A431 cells
常规说明	<p>ab222292 is the carrier-free version of <a href="#">ab109189</a>.</p> <p>Our <b>carrier-free</b> antibodies are typically supplied in a PBS-only formulation, purified and free of BSA, sodium azide and glycerol. The carrier-free buffer and high concentration allow for increased conjugation efficiency.</p> <p>This conjugation-ready format is designed for use with fluorochromes, metal isotopes, oligonucleotides, and enzymes, which makes them ideal for antibody labelling, functional and cell-based assays, flow-based assays (e.g. mass cytometry) and Multiplex Imaging applications.</p> <p>Use our <b>conjugation kits</b> for antibody conjugates that are ready-to-use in as little as 20 minutes with &lt;1 minute hands-on-time and 100% antibody recovery: available for fluorescent dyes, HRP, biotin and gold.</p> <p>Our <b>Low endotoxin, azide-free formats</b> have low endotoxin level (<math>\leq 1</math> EU/ml, determined by the LAL assay) and are free from azide, to achieve consistent experimental results in functional assays.</p> <p>Mouse, Rat: We have preliminary internal testing data to indicate this antibody may not react with these species. Please contact us for more information.</p>

### 性能

形式	Liquid
----	--------

存放说明	Shipped at 4°C. Store at +4°C. Do Not Freeze.
存储溶液	pH: 7.2 Constituent: PBS
无载体	是
纯度	Protein A purified
克隆	单克隆
克隆编号	EPR4051
同种型	IgG

应用

The Abpromise guarantee      **Abpromise™**承诺保证使用ab222292于以下的经测试应用

“应用说明”部分 下显示的仅为推荐的起始稀释度;实际最佳的稀释度/浓度应由使用者检定。

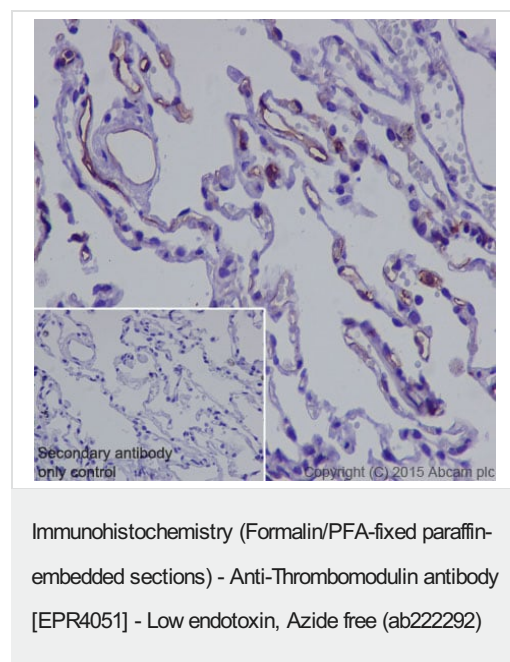
应用	Ab评论	说明
Flow Cyt (Intra)		Use at an assay dependent concentration. <b>ab199376</b> - Rabbit monoclonal IgG (Low endotoxin, Azide free), is suitable for use as an isotype control with this antibody.
WB		Use at an assay dependent concentration. Predicted molecular weight: 60 kDa.
IHC-P		Use at an assay dependent concentration. Perform heat mediated antigen retrieval before commencing with IHC staining protocol.
ICC/IF		Use at an assay dependent concentration.
IP		Use at an assay dependent concentration.

靶标

功能	Thrombomodulin is a specific endothelial cell receptor that forms a 1:1 stoichiometric complex with thrombin. This complex is responsible for the conversion of protein C to the activated protein C (protein Ca). Once evolved, protein Ca scissions the activated cofactors of the coagulation mechanism, factor Va and factor VIIIa, and thereby reduces the amount of thrombin generated.
组织特异性	Endothelial cells are unique in synthesizing thrombomodulin.
疾病相关	Defects in THBD are the cause of thrombophilia due to thrombomodulin defect (THR-THBD) [MIM:188040]. A hemostatic disorder characterized by a tendency to thrombosis. Defects in THBD are a cause of susceptibility to hemolytic uremic syndrome atypical type 6 (AHUS6) [MIM:612926]. An atypical form of hemolytic uremic syndrome. It is a complex genetic disease characterized by microangiopathic hemolytic anemia, thrombocytopenia, renal failure and absence of episodes of enterocolitis and diarrhea. In contrast to typical hemolytic uremic syndrome, atypical forms have a poorer prognosis, with higher death rates and frequent progression to end-stage renal disease. Note=Susceptibility to the development of atypical hemolytic uremic syndrome can be conferred by mutations in various components of or regulatory

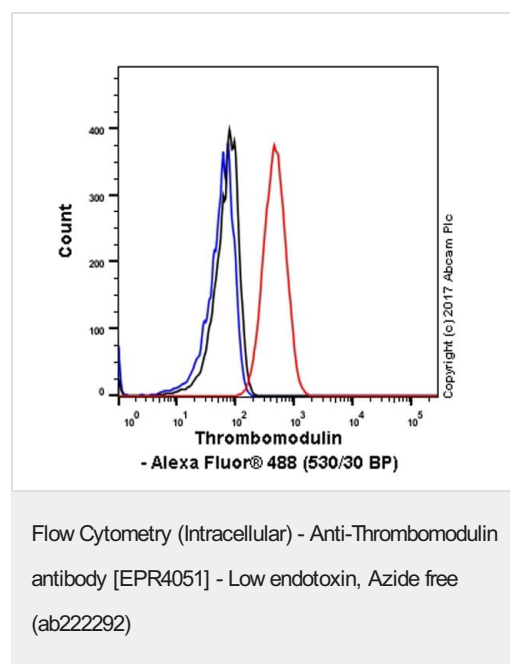
	factors in the complement cascade system. Other genes may play a role in modifying the phenotype.
序列相似性	Contains 1 C-type lectin domain. Contains 6 EGF-like domains.
翻译后修饰	N-glycosylated. The iron and 2-oxoglutarate dependent 3-hydroxylation of aspartate and asparagine is (R) stereospecific within EGF domains.
细胞定位	Membrane.

## 图片



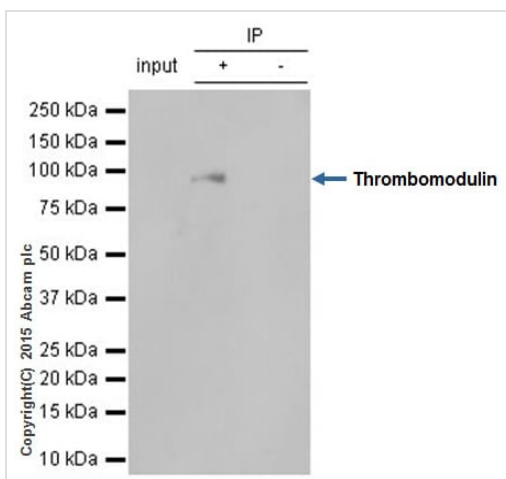
Immunohistochemical staining of paraffin embedded human lung with purified **ab109189** at a working dilution of 1/1000. The secondary antibody used is HRP goat anti-rabbit IgG H&L (**ab97051**) at 1/500. The sample is counter-stained with hematoxylin. Antigen retrieval was performed using Tris-EDTA buffer, pH 9.0. PBS was used instead of the primary antibody as the negative control, and is shown in the inset.

This data was developed using the same antibody clone in a different buffer formulation containing PBS, BSA, glycerol, and sodium azide (**ab109189**).



Intracellular Flow Cytometry analysis of A431 (human epidermoid carcinoma) cells labeling Thrombomodulin with purified **ab109189** at 1/150 (red). Cells were fixed with 4% paraformaldehyde and permeabilised with 90% methanol. A Goat Anti-Rabbit IgG H&L (Alexa Fluor® 488) (**ab150077**) (1/2000 dilution) was used as the secondary antibody. Rabbit IgG, monoclonal [EPR25A] - Isotype Control (**ab172730**) (Black) was used as the isotype control, cells without incubation with primary antibody and secondary antibody (Blue) were used as the unlabeled control.

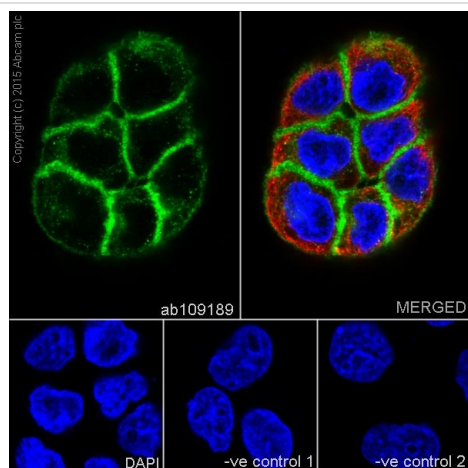
This data was developed using the same antibody clone in a different buffer formulation containing PBS, BSA, glycerol, and sodium azide (**ab109189**).



Immunoprecipitation - Anti-Thrombomodulin antibody  
[EPR4051] - Low endotoxin, Azide free (ab222292)

**ab109189** (purified) at 1/90 immunoprecipitating thrombomodulin in 10 µg human placenta whole cell lysate (Lanes 1 and 2, observed at 100 kDa). Lane 3 - PBS. For western blotting, HRP Veriblot for IP (**ab131366**) was used for detection at 1/10000 dilution. Blocking buffer and concentration: 5% NFDm/TBST Dilution buffer and concentration: 5% NFDm/TBST

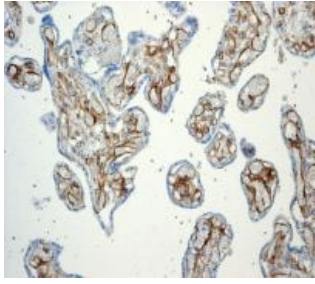
This data was developed using the same antibody clone in a different buffer formulation containing PBS, BSA, glycerol, and sodium azide (**ab109189**).



Immunocytochemistry/ Immunofluorescence - Anti-Thrombomodulin antibody [EPR4051] - Low endotoxin, Azide free (ab222292)

Immunofluorescence staining of A431 cells with purified **ab109189** at a working dilution of 1/300, counter-stained with DAPI. The secondary antibody was Alexa Fluor® 488 goat anti-rabbit (**ab150077**), used at a dilution of 1/1000. **ab7291**, a mouse anti-tubulin antibody (1/1000), was used to stain tubulin along with **ab150120** (Alexa Fluor® 594 goat anti-mouse, 1/1000), shown in the top right hand panel. The cells were fixed in 4% PFA and permeabilized using 0.1% Triton X 100. The negative controls are shown in bottom middle and right hand panels - for negative control 1, purified **ab109189** was used at a dilution of 1/500 followed by an Alexa Fluor® 594 goat anti-mouse antibody (**ab150120**) at a dilution of 1/500. For negative control 2, **ab7291** (mouse anti-tubulin) was used at a dilution of 1/500 followed by an Alexa Fluor® 488 goat anti-rabbit antibody (**ab150077**) at a dilution of 1/400.

This data was developed using the same antibody clone in a different buffer formulation containing PBS, BSA, glycerol, and sodium azide (**ab109189**).

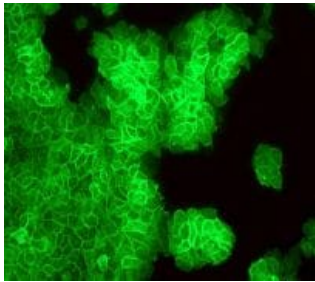


Immunohistochemistry (Formalin/PFA-fixed paraffin-embedded sections) - Anti-Thrombomodulin antibody [EPR4051] - Low endotoxin, Azide free (ab222292)

Unpurified **ab109189**, at 1/100 dilution, staining Thrombomodulin in Human placenta tissue by Immunohistochemistry.

This data was developed using the same antibody clone in a different buffer formulation containing PBS, BSA, glycerol, and sodium azide (**ab109189**).

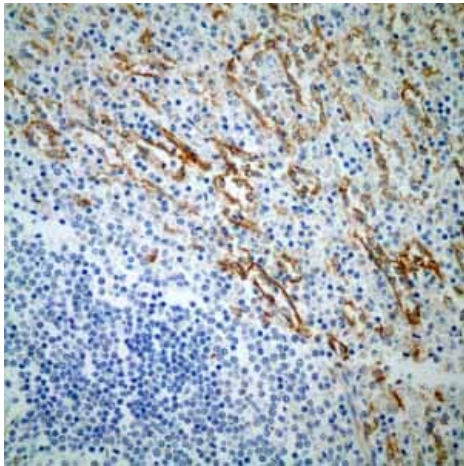
Perform heat mediated antigen retrieval before commencing with IHC staining protocol.



Immunocytochemistry/ Immunofluorescence - Anti-Thrombomodulin antibody [EPR4051] - Low endotoxin, Azide free (ab222292)

Unpurified **ab109189**, at 1/100 dilution, staining Thrombomodulin in A431 cells by Immunofluorescence.

This data was developed using the same antibody clone in a different buffer formulation containing PBS, BSA, glycerol, and sodium azide (**ab109189**).

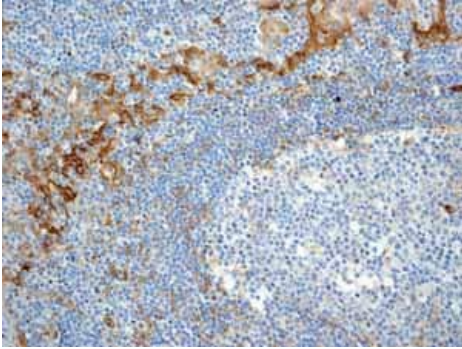


Immunohistochemistry (Formalin/PFA-fixed paraffin-embedded sections) - Anti-Thrombomodulin antibody [EPR4051] - Low endotoxin, Azide free (ab222292)

Immunohistochemical analysis of paraffin embedded normal Human spleen tissue using unpurified **ab109189** showing +ve staining.

This data was developed using the same antibody clone in a different buffer formulation containing PBS, BSA, glycerol, and sodium azide (**ab109189**).

Perform heat mediated antigen retrieval before commencing with IHC staining protocol.

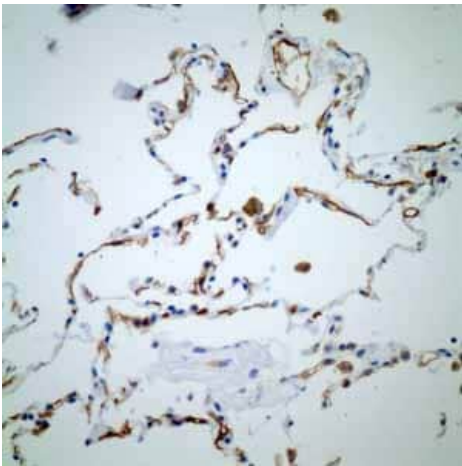


Immunohistochemistry (Formalin/PFA-fixed paraffin-embedded sections) - Anti-Thrombomodulin antibody [EPR4051] - Low endotoxin, Azide free (ab222292)

Immunohistochemical analysis of paraffin embedded normal Human tonsil tissue using unpurified **ab109189** showing +ve staining.

This data was developed using the same antibody clone in a different buffer formulation containing PBS, BSA, glycerol, and sodium azide (**ab109189**).

Perform heat mediated antigen retrieval before commencing with IHC staining protocol.

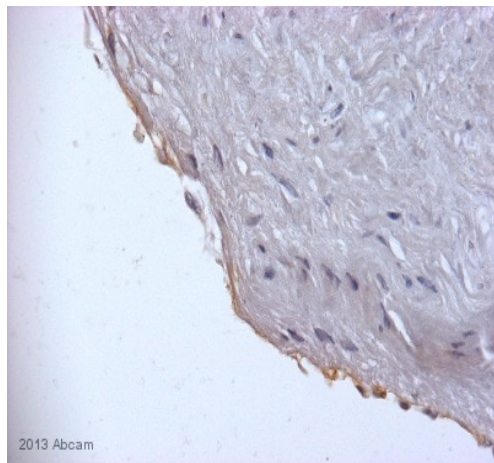


Immunohistochemistry (Formalin/PFA-fixed paraffin-embedded sections) - Anti-Thrombomodulin antibody [EPR4051] - Low endotoxin, Azide free (ab222292)

Immunohistochemical analysis of paraffin embedded normal Human lung tissue using unpurified **ab109189** showing +ve staining.

This data was developed using the same antibody clone in a different buffer formulation containing PBS, BSA, glycerol, and sodium azide (**ab109189**).

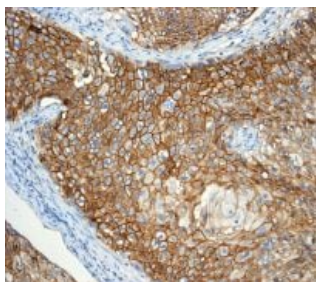
Perform heat mediated antigen retrieval before commencing with IHC staining protocol.



Immunohistochemistry (Formalin/PFA-fixed paraffin-embedded sections) - Anti-Thrombomodulin antibody [EPR4051] - Low endotoxin, Azide free (ab222292)  
This image is courtesy of an anonymous Abreview.

Unpurified **ab109189** staining Thrombomodulin in Human artery tissue sections by Immunohistochemistry (IHC-P - paraformaldehyde-fixed, paraffin-embedded sections). Tissue was fixed with formaldehyde and blocked with 20% serum for 60 minutes at 21°C; antigen retrieval was by heat mediation in a citrate buffer. Samples were incubated with primary antibody (1/200) for 16 hours at 4°C. A Biotin-conjugated Goat anti-rabbit polyclonal (1/200) was used as the secondary antibody.

This data was developed using the same antibody clone in a different buffer formulation containing PBS, BSA, glycerol, and sodium azide (**ab109189**).



Immunohistochemistry (Formalin/PFA-fixed paraffin-embedded sections) - Anti-Thrombomodulin antibody [EPR4051] - Low endotoxin, Azide free (ab222292)

This IHC data was generated using the same anti-Thrombomodulin antibody clone, EPR4051, in a different buffer formulation (cat# **ab109189**).

Unpurified **ab109189**, at 1/100 dilution, staining Thrombomodulin in Human squamous cervical carcinoma tissue by Immunohistochemistry.

Perform heat mediated antigen retrieval before commencing with IHC staining protocol.

### Why choose a recombinant antibody?



**Research with confidence**  
Consistent and reproducible results



**Long-term and scalable supply**  
Recombinant technology



**Success from the first experiment**  
Confirmed specificity



**Ethical standards compliant**  
Animal-free production

Anti-Thrombomodulin antibody [EPR4051] - Low endotoxin, Azide free (ab222292)

**Please note:** All products are "FOR RESEARCH USE ONLY. NOT FOR USE IN DIAGNOSTIC PROCEDURES"

### Our Abpromise to you: Quality guaranteed and expert technical support

---

- Replacement or refund for products not performing as stated on the datasheet
- Valid for 12 months from date of delivery
- Response to your inquiry within 24 hours
- We provide support in Chinese, English, French, German, Japanese and Spanish
- Extensive multi-media technical resources to help you
- We investigate all quality concerns to ensure our products perform to the highest standards

If the product does not perform as described on this datasheet, we will offer a refund or replacement. For full details of the Abpromise, please visit <https://www.abcam.cn/abpromise> or contact our technical team.

### Terms and conditions

---

- Guarantee only valid for products bought direct from Abcam or one of our authorized distributors