

Anti-THAP11 antibody ab124204

[1 Abreviews](#) [1 图像](#)

概述

产品名称	Anti-THAP11抗体
描述	兔多克隆抗体to THAP11
宿主	Rabbit
经测试应用	适用于: WB
种属反应性	与反应: Mouse, Recombinant fragment 预测可用于: Rabbit, Cow, Dog, Human, Pig, Zebrafish, Macaque monkey, Gorilla, Chinese hamster 
免疫原	Synthetic peptide corresponding to Human THAP11 aa 1-100 conjugated to keyhole limpet haemocyanin. (Peptide available as ab124207)
阳性对照	This antibody gave a positive signal in THAP11 recombinant protein as well as the following tissue lysates: Mouse Brain; Mouse Hippocampus; Mouse Olfactory Bulb.
常规说明	<p>The Life Science industry has been in the grips of a reproducibility crisis for a number of years. Abcam is leading the way in addressing this with our range of recombinant monoclonal antibodies and knockout edited cell lines for gold-standard validation. Please check that this product meets your needs before purchasing.</p> <p>If you have any questions, special requirements or concerns, please send us an inquiry and/or contact our Support team ahead of purchase. Recommended alternatives for this product can be found below, along with publications, customer reviews and Q&As</p>

性能

形式	Liquid
存放说明	Shipped at 4°C. Store at +4°C short term (1-2 weeks). Upon delivery aliquot. Store at -20°C or -80°C. Avoid freeze / thaw cycle.
存储溶液	pH: 7.40 Preservative: 0.02% Sodium azide Constituent: PBS
	Batches of this product that have a concentration < 1mg/ml may have BSA added as a stabilising agent. If you would like information about the formulation of a specific lot, please contact our scientific support team who will be happy to help.

纯度	Immunogen affinity purified
克隆	多克隆
同种型	IgG

应用

The Abpromise guarantee **Abpromise™**承诺保证使用ab124204于以下的经测试应用

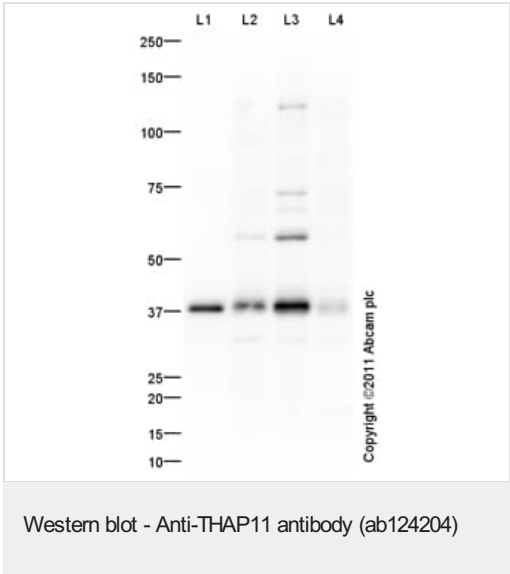
“应用说明”部分 下显示的仅为推荐的起始稀释度;实际最佳的稀释度/浓度应由使用者检定。

应用	Ab评论	说明
WB		Use a concentration of 1 µg/ml. Detects a band of approximately 37 kDa (predicted molecular weight: 34 kDa).

靶标

功能	Transcriptional repressor that plays a central role for embryogenesis and the pluripotency of embryonic stem (ES) cells. Sequence-specific DNA-binding factor that represses gene expression in pluripotent ES cells by directly binding to key genetic loci and recruiting epigenetic modifiers.
序列相似性	Belongs to the THAP11 family. Contains 1 THAP-type zinc finger.
细胞定位	Nucleus. Cytoplasm. May be regulated by shuttling of the protein between the cytoplasm and nucleus.

图片



All lanes : Anti-THAP11 antibody (ab124204) at 1 µg

Lane 1 : THAP11 Recombinant protein at 0.1 µg

Lane 2 : Brain (Mouse) Tissue Lysate at 10 µg

Lane 3 : Mouse Hippocampus Tissue Lysate at 10 µg

Lane 4 : Mouse Olfactory Bulb Lysate at 10 µg

Secondary

All lanes : Goat Anti-Rabbit IgG H&L (HRP) preadsorbed (**ab97080**) at 1/5000 dilution

Developed using the ECL technique.

Performed under reducing conditions.

Predicted band size: 34 kDa

Observed band size: 39 kDa

Additional bands at: 130 kDa, 60 kDa, 75 kDa. We are unsure as to the identity of these extra bands.

Exposure time: 30 seconds

Please note: All products are "FOR RESEARCH USE ONLY. NOT FOR USE IN DIAGNOSTIC PROCEDURES"

Our Abpromise to you: Quality guaranteed and expert technical support

- Replacement or refund for products not performing as stated on the datasheet
- Valid for 12 months from date of delivery
- Response to your inquiry within 24 hours
- We provide support in Chinese, English, French, German, Japanese and Spanish
- Extensive multi-media technical resources to help you
- We investigate all quality concerns to ensure our products perform to the highest standards

If the product does not perform as described on this datasheet, we will offer a refund or replacement. For full details of the Abpromise, please visit <https://www.abcam.cn/abpromise> or contact our technical team.

Terms and conditions

- Guarantee only valid for products bought direct from Abcam or one of our authorized distributors