

Anti-TFE3 antibody ab93808

★★★★★ [1 Abreviews](#) [8 References](#) [2 图像](#)

概述

产品名称	Anti-TFE3抗体
描述	兔多克隆抗体to TFE3
宿主	Rabbit
经测试应用	适用于: WB, IP
种属反应性	与反应: Human 预测可用于: Mouse, Rat, Horse, Guinea pig, Cow, Dog, Pig, Chimpanzee, Rhesus monkey, Gorilla, Chinese hamster, Elephant 
免疫原	Synthetic peptide from a region within amino acids 500-550 of Human TFE3 (NP_006512.2)
阳性对照	HeLa and 293T cells
常规说明	<p>The Life Science industry has been in the grips of a reproducibility crisis for a number of years. Abcam is leading the way in addressing this with our range of recombinant monoclonal antibodies and knockout edited cell lines for gold-standard validation. Please check that this product meets your needs before purchasing.</p> <p>If you have any questions, special requirements or concerns, please send us an inquiry and/or contact our Support team ahead of purchase. Recommended alternatives for this product can be found below, along with publications, customer reviews and Q&As</p>

性能

形式	Liquid
存放说明	Shipped at 4°C. Upon delivery aliquot and store at -20°C. Avoid freeze / thaw cycles.
存储溶液	<p>pH: 6.8</p> <p>Preservative: 0.09% Sodium azide</p> <p>Constituents: 0.1% BSA, Tris buffered saline</p>
纯度	Immunogen affinity purified
克隆	多克隆
同种型	IgG

应用

The Abpromise guarantee

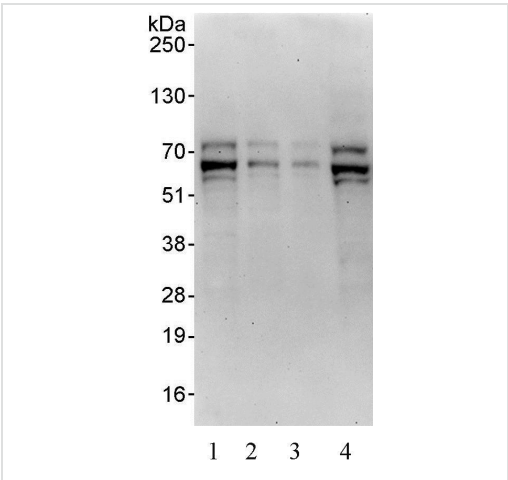
Abpromise™承诺保证使用ab93808于以下的经测试应用

“应用说明”部分 下显示的仅为推荐的起始稀释度;实际最佳的稀释度/浓度应由使用者检定。

应用	Ab评论	说明
WB		1/2000 - 1/10000. Predicted molecular weight: 62 kDa.
IP		Use a concentration of 2 - 5 µg/ml.

靶标	
功能	Transcription factor that specifically recognizes and binds E-box sequences (3'-CANNTG-5'). Efficient DNA-binding requires dimerization with itself or with another Mit/TFE family member such as TFEB or MITF. In association with TFEB, activates the expression of CD40L in T-cells, thereby playing a role in T-cell-dependent antibody responses in activated CD4(+) T-cells and thymus-dependent humoral immunity. Specifically recognizes the MUE3 box, a subset of E-boxes, present in the immunoglobulin enhancer. It also binds very well to a USF/MLTF site.
组织特异性	Ubiquitous in fetal and adult tissues.
疾病相关	Note=A chromosomal aberration involving TFE3 is found in patients with alveolar soft part sarcoma. Translocation t(X;17)(p11;q25) with ASPSCR1 forms a ASPSCR1-TFE3 fusion protein. Note=Chromosomal aberrations involving TFE3 are found in patients with papillary renal cell carcinoma. Translocation t(X;1)(p11.2;q21.2) with PRCC; translocation t(X;1)(p11.2;p34) with PSF; inversion inv(X)(p11.2;q12) that fuses NONO to TFE3.
序列相似性	Belongs to the Mit/TFE family. Contains 1 basic helix-loop-helix (bHLH) domain.
翻译后修饰	Sumoylated; does not affect dimerization with MITF.
细胞定位	Nucleus.

图片



Western blot - Anti-TFE3 antibody (ab93808)

All lanes : Anti-TFE3 antibody (ab93808) at 0.04 µg/ml

Lane 1 : HeLa whole lysate at 50 µg

Lane 2 : HeLa whole lysate at 15 µg

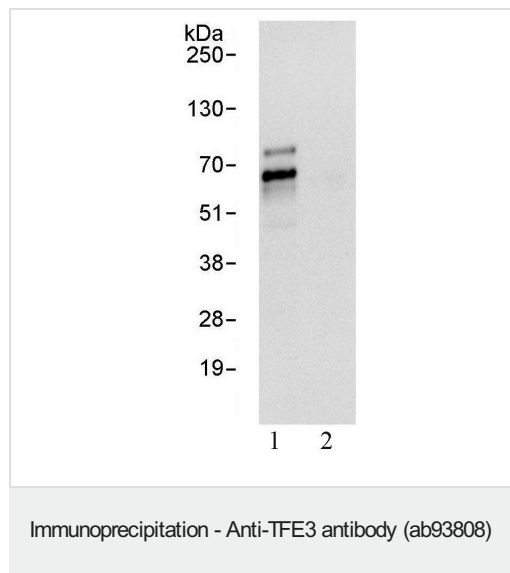
Lane 3 : HeLa whole lysate at 5 µg

Lane 4 : 293T cell lysate at 50 µg

Developed using the ECL technique.

Predicted band size: 62 kDa

Exposure time: 3 minutes



1 mg HeLa cell lysate was immunoprecipitated with 3µg/mg ab93808 (lane 1) or control IgG (lane 2). 20% of the immunoprecipitates were analysed by Western blot. Bands were analysed using ab93808 at 0.4µg/ml and developed using cheiluminescence.

Please note: All products are "FOR RESEARCH USE ONLY. NOT FOR USE IN DIAGNOSTIC PROCEDURES"

Our Abpromise to you: Quality guaranteed and expert technical support

- Replacement or refund for products not performing as stated on the datasheet
- Valid for 12 months from date of delivery
- Response to your inquiry within 24 hours
- We provide support in Chinese, English, French, German, Japanese and Spanish
- Extensive multi-media technical resources to help you
- We investigate all quality concerns to ensure our products perform to the highest standards

If the product does not perform as described on this datasheet, we will offer a refund or replacement. For full details of the Abpromise, please visit <https://www.abcam.cn/abpromise> or contact our technical team.

Terms and conditions

- Guarantee only valid for products bought direct from Abcam or one of our authorized distributors