

Anti-TEX12 antibody ab122455

1 [References](#) **3** [图像](#)

概述

| | |
|-------|---|
| 产品名称 | Anti-TEX12抗体 |
| 描述 | 兔多克隆抗体to TEX12 |
| 宿主 | Rabbit |
| 经测试应用 | 适用于: IHC-P, WB, ICC/IF |
| 种属反应性 | 与反应: Human |
| 免疫原 | antigen sequence: MANHLVKPDN RNCKRPRELE SPVPDSPQLS SLGKSDSSFS EISGLFYKDE ALEKDLNDVS, corresponding to amino acids 2-61 of Human TEX12. Run BLAST with ExPASy Run BLAST with NCBI |
| 阳性对照 | Human testis tissue. |
| 常规说明 | <p>The Life Science industry has been in the grips of a reproducibility crisis for a number of years. Abcam is leading the way in addressing this with our range of recombinant monoclonal antibodies and knockout edited cell lines for gold-standard validation. Please check that this product meets your needs before purchasing.</p> <p>If you have any questions, special requirements or concerns, please send us an inquiry and/or contact our Support team ahead of purchase. Recommended alternatives for this product can be found below, along with publications, customer reviews and Q&As</p> |

性能

| | |
|------|---|
| 形式 | Liquid |
| 存放说明 | Shipped at 4°C. Upon delivery aliquot and store at -20°C. Avoid freeze / thaw cycles. |
| 存储溶液 | pH: 7.20 Preservative: 0.02% Sodium azide Constituents: 40% Glycerol (glycerin, glycerine), 59% PBS |
| 纯度 | Immunogen affinity purified |
| 克隆 | 多克隆 |
| 同种型 | IgG |

应用

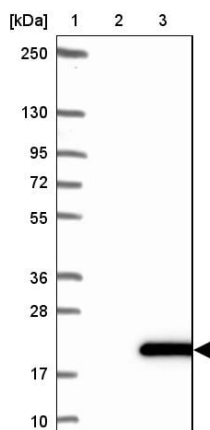
Abpromise™ 承诺保证使用ab122455于以下的经测试应用

| 应用 | Ab评论 | 说明 |
|--------|------|---|
| IHC-P | | 1/200 - 1/500. Perform heat mediated antigen retrieval with citrate buffer pH 6 before commencing with IHC staining protocol. |
| WB | | Use a concentration of 0.04 - 0.4 µg/ml. |
| ICC/IF | | Use a concentration of 1 - 4 µg/ml. Recommend PFA Fixation and Triton X-100 treatment |

Testis specific.

A fluorescence microscopy image showing a cell with a large, irregularly shaped blue nucleus. The cytoplasm is filled with a dense network of red, fibrous structures, likely representing the cytoskeleton. A few small green spots are visible within the cytoplasm.

Immunocytochemistry/ Immunofluorescence - Anti-
TEX12 antibody (ab122455)



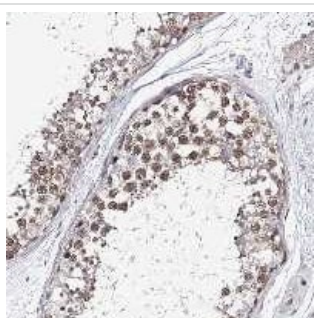
Western blot - Anti-TEX12 antibody (ab122455)

Lanes 2-3 : Anti-TEX12 antibody (ab122455)

Lane 1 : Marker

Lane 2 : HEK293T cell lysate - vector only transfected

Lane 3 : HEK293T cell lysate - overexpressing TEX12 with a C-terminal myc-DDK tag (~3.1kDa)



Immunohistochemistry (Formalin/PFA-fixed paraffin-embedded sections) - Anti-TEX12 antibody (ab122455)

ab122455, at 1/200 dilution, staining TEX12 in paraffin embedded Human testis tissue by Immunohistochemistry.

Please note: All products are "FOR RESEARCH USE ONLY. NOT FOR USE IN DIAGNOSTIC PROCEDURES"

Our Abpromise to you: Quality guaranteed and expert technical support

- Replacement or refund for products not performing as stated on the datasheet
- Valid for 12 months from date of delivery
- Response to your inquiry within 24 hours
- We provide support in Chinese, English, French, German, Japanese and Spanish
- Extensive multi-media technical resources to help you
- We investigate all quality concerns to ensure our products perform to the highest standards

If the product does not perform as described on this datasheet, we will offer a refund or replacement. For full details of the Abpromise, please visit <https://www.abcam.cn/abpromise> or contact our technical team.

Terms and conditions

- Guarantee only valid for products bought direct from Abcam or one of our authorized distributors