

Anti-TEM8/ATR antibody ab21269

[2 References](#) [3 图像](#)

概述

产品名称	Anti-TEM8/ATR抗体
描述	兔多克隆抗体to TEM8/ATR
宿主	Rabbit
特异性	This antibody will recognize only the largest isoform of TEM8/ATR.
经测试应用	适用于: ICC/IF, WB
种属反应性	与反应: Human
免疫原	Synthetic peptide corresponding to Human TEM8/ATR (C terminal).
阳性对照	WB: K562 cell lysates, Wild-type HeLa cell lysate, U-2 OS cell lysate
常规说明	<p>The Life Science industry has been in the grips of a reproducibility crisis for a number of years. Abcam is leading the way in addressing this with our range of recombinant monoclonal antibodies and knockout edited cell lines for gold-standard validation. Please check that this product meets your needs before purchasing.</p> <p>If you have any questions, special requirements or concerns, please send us an inquiry and/or contact our Support team ahead of purchase. Recommended alternatives for this product can be found below, along with publications, customer reviews and Q&As</p>

性能

形式	Liquid
存放说明	Shipped at 4°C. Store at +4°C.
存储溶液	pH: 7.2 Preservative: 0.02% Sodium azide Constituent: PBS
纯度	Protein A purified
纯化说明	This antibody is ion exchange chromatography purified.
克隆	多克隆
同种型	IgG

应用

The Abpromise guarantee**Abpromise™**承诺保证使用ab21269于以下的经测试应用

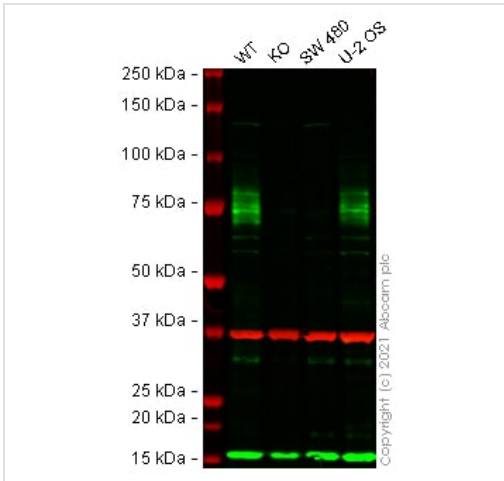
“应用说明”部分下显示的仅为推荐的起始稀释度;实际最佳的稀释度/浓度应由使用者检定。

应用	Ab评论	说明
ICC/IF		Use a concentration of 2 µg/ml.
WB		Use a concentration of 1 - 2 µg/ml. Predicted molecular weight: 63 kDa.

靶标

功能	Plays a role in cell attachment and migration. Interacts with extracellular matrix proteins and with the actin cytoskeleton. Mediates adhesion of cells to type 1 collagen and gelatin, reorganization of the actin cytoskeleton and promotes cell spreading. Plays a role in the angiogenic response of cultured umbilical vein endothelial cells.
组织特异性	Detected in umbilical vein endothelial cells (at protein level). Highly expressed in tumor endothelial cells.
疾病相关	Defects in ANTXR1 are associated with susceptibility to hemangioma capillary infantile (HCI) [MIM:602089]. HCI are benign, highly proliferative lesions involving aberrant localized growth of capillary endothelium. They are the most common tumor of infancy, occurring in up to 10% of all births. Hemangiomas tend to appear shortly after birth and show rapid neonatal growth for up to 12 months characterized by endothelial hypercellularity and increased numbers of mast cells. This phase is followed by slow involution at a rate of about 10% per year and replacement by fibrofatty stroma.
序列相似性	Belongs to the ATR family. Contains 1 VWFA domain.
结构域	Binding to PA occurs through the VWA domain.
细胞定位	Cell membrane. Cell projection > lamellipodium membrane. Cell projection > filopodium membrane. At the membrane of lamellipodia and at the tip of actin-enriched filopodia. Colocalizes with actin at the base of lamellipodia.

图片



Western blot - Anti-TEM8/ATR antibody (ab21269)

All lanes : Anti-TEM8/ATR antibody (ab21269) at 1 µg/ml

Lane 1 : Wild-type HeLa cell lysate

Lane 2 : ANTXR1 knockout HeLa cell lysate

Lane 3 : SW480 cell lysate

Lane 4 : U-2 OS cell lysate

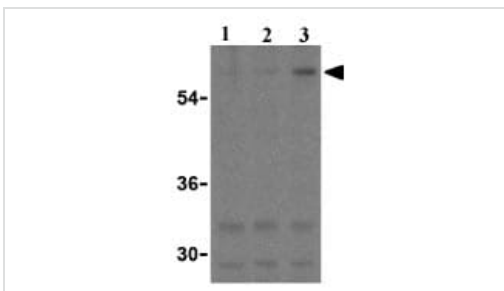
Lysates/proteins at 20 µg per lane.

Performed under reducing conditions.

Predicted band size: 63 kDa

Observed band size: 100 kDa

False colour image of Western blot: Anti-TEM8/ATR antibody staining at 1 µg/ml, shown in green; Mouse anti-GAPDH antibody [6C5] ([ab8245](#)) loading control staining at 1/20000 dilution, shown in red. In Western blot, ab21269 was shown to bind specifically to TEM8/ATR. A band was observed at 100 kDa in wild-type HeLa cell lysates with no signal observed at this size in ANTXR1 knockout cell line [ab265077](#) (knockout cell lysate [ab257350](#)). To generate this image, wild-type and ANTXR1 knockout HeLa cell lysates were analysed. First, samples were run on an SDS-PAGE gel then transferred onto a nitrocellulose membrane. Membranes were blocked in 3 % milk in TBS-0.1 % Tween[®] 20 (TBS-T) before incubation with primary antibodies overnight at 4 °C. Blots were washed four times in TBS-T, incubated with secondary antibodies for 1 h at room temperature, washed again four times then imaged. Secondary antibodies used were Goat anti-Rabbit IgG H&L (IRDye[®] 800CW) preabsorbed ([ab216773](#)) and Goat anti-Mouse IgG H&L (IRDye[®] 680RD) preabsorbed ([ab216776](#)) at 1/20000 dilution.



Western blot - Anti-TEM8/ATR antibody (ab21269)

Lane 1 : Anti-TEM8/ATR antibody (ab21269) at 0.5 µg/ml

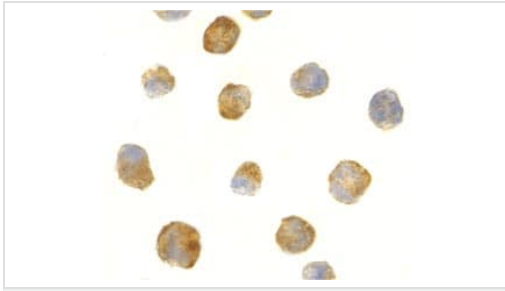
Lane 2 : Anti-TEM8/ATR antibody (ab21269) at 1 µg/ml

Lane 3 : Anti-TEM8/ATR antibody (ab21269) at 2 µg/ml

All lanes : K562 cell lysate

Predicted band size: 63 kDa

Western blot analysis of TEM8/ATR in K562 cell lysates with ab21269 at (A) 0.5, (B) 1 and (C) 2µg/ml.



ab21269 at 2µg/ml staining TEM8/ATR in K562 cells by ICC/IF

Immunocytochemistry/ Immunofluorescence - Anti-TEM8/ATR antibody (ab21269)

Please note: All products are "FOR RESEARCH USE ONLY. NOT FOR USE IN DIAGNOSTIC PROCEDURES"

Our Abpromise to you: Quality guaranteed and expert technical support

- Replacement or refund for products not performing as stated on the datasheet
- Valid for 12 months from date of delivery
- Response to your inquiry within 24 hours
- We provide support in Chinese, English, French, German, Japanese and Spanish
- Extensive multi-media technical resources to help you
- We investigate all quality concerns to ensure our products perform to the highest standards

If the product does not perform as described on this datasheet, we will offer a refund or replacement. For full details of the Abpromise, please visit <https://www.abcam.cn/abpromise> or contact our technical team.

Terms and conditions

- Guarantee only valid for products bought direct from Abcam or one of our authorized distributors