

Anti-TEM4 antibody ab67278

2 References 2 图像

概述	
产品名称	Anti-TEM4抗体
描述	兔多克隆抗体to TEM4
宿主	Rabbit
经测试应用	适用于: ICC/IF, WB, IHC-P
种属反应性	与反应: Human
免疫原	Synthetic peptide. This information is proprietary to Abcam and/or its suppliers.
阳性对照	Jurkat cell lysate. Human spleen tissue.
常规说明	<p>The Life Science industry has been in the grips of a reproducibility crisis for a number of years. Abcam is leading the way in addressing this with our range of recombinant monoclonal antibodies and knockout edited cell lines for gold-standard validation. Please check that this product meets your needs before purchasing.</p> <p>If you have any questions, special requirements or concerns, please send us an inquiry and/or contact our Support team ahead of purchase. Recommended alternatives for this product can be found below, along with publications, customer reviews and Q&As</p>
性能	
形式	Liquid
存放说明	Shipped at 4°C. Store at +4°C.
存储溶液	pH: 7.2 Preservative: 0.02% Sodium azide Constituent: PBS
纯度	Immunogen affinity purified
克隆	多克隆
同种型	IgG
应用	

The Abpromise guarantee Abpromise™承诺保证使用ab67278于以下的经测试应用

“应用说明”部分 下显示的仅为推荐的起始稀释度;实际最佳的稀释度/浓度应由使用者检定。

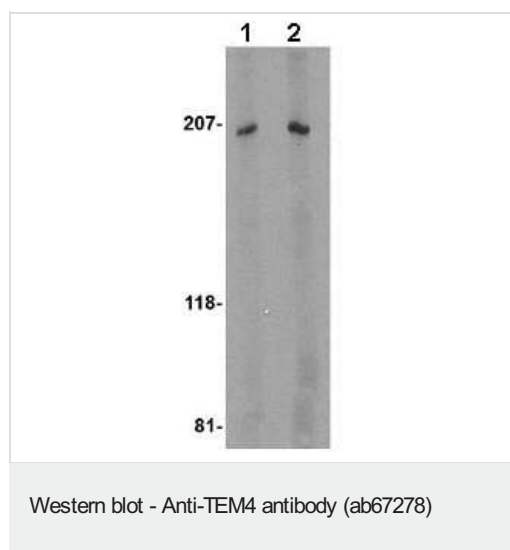
应用	Ab评论	说明
ICC/IF		Use at an assay dependent concentration.
WB		Use a concentration of 1 - 2 µg/ml. Detects a band of approximately 200 kDa (predicted molecular weight: 222 kDa).
IHC-P		Use at an assay dependent concentration.

靶标

相关性

TEM4 (Tumor endothelial marker 4) is a Rho-specific GEF (guanine-nucleotide exchange factor) with novel structural and regulatory properties and predominant expression in the heart. Rho GTPases, which are activated by specific GEFs, play pivotal roles in several cellular functions. TEM4, encoding a protein containing 1510 amino acids, contains a RhoGEF-specific Dbl homology (DH) domain but lacks their typical pleckstrin homology domain. TEM4 couples tyrosine kinase signals with the activation of the rho/rac GTPases, thus leading to cell differentiation and/or proliferation. Elevated levels of TEM4, TEM5, TEM6, TEM7 and TEM7R were also raised in breast cancer tissues. TEM4 could also prove to be useful as a target, therapeutically.

图片



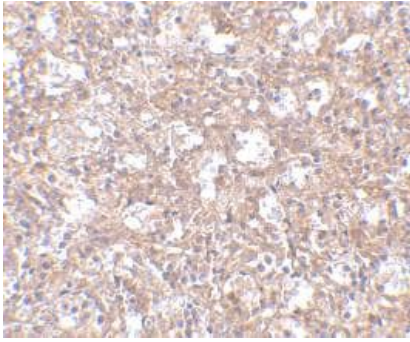
Lane 1 : Anti-TEM4 antibody (ab67278) at 1 µg/ml
Lane 2 : Anti-TEM4 antibody (ab67278) at 2 µg/ml

All lanes : Jurkat cell lysate

Lysates/proteins at 15 µg per lane.

Predicted band size: 222 kDa

Observed band size: 200 kDa



ab67278 at 2.5 µg/ml staining of TEM4 in human spleen tissue using IHC-P.

Immunohistochemistry (Formalin/PFA-fixed paraffin-embedded sections) - Anti-TEM4 antibody (ab67278)

Please note: All products are "FOR RESEARCH USE ONLY. NOT FOR USE IN DIAGNOSTIC PROCEDURES"

Our Abpromise to you: Quality guaranteed and expert technical support

- Replacement or refund for products not performing as stated on the datasheet
- Valid for 12 months from date of delivery
- Response to your inquiry within 24 hours
- We provide support in Chinese, English, French, German, Japanese and Spanish
- Extensive multi-media technical resources to help you
- We investigate all quality concerns to ensure our products perform to the highest standards

If the product does not perform as described on this datasheet, we will offer a refund or replacement. For full details of the Abpromise, please visit <https://www.abcam.cn/abpromise> or contact our technical team.

Terms and conditions

- Guarantee only valid for products bought direct from Abcam or one of our authorized distributors