




Anti-TEA domain family member 2/ETF antibody ab92279

4 References **2 图像**

概述

产品名称	Anti-TEA domain family member 2/ETF 抗体
描述	山羊多克隆抗体 to TEA domain family member 2/ETF
宿主	Goat
特异性	Not expected to cross-react with other TEA domain family proteins.
经测试应用	适用于: WB
种属反应性	与反应: Human 预测可用于: Mouse, Rat, Dog 
免疫原	Synthetic peptide corresponding to Human TEA domain family member 2/ETF aa 238-249 (internal sequence). Sequence: C-EPPDAVDSYQRH Database link: NP_003589.1  Run BLAST with  Run BLAST with
阳性对照	Human ileum tissue lysate
常规说明	<p>The Life Science industry has been in the grips of a reproducibility crisis for a number of years. Abcam is leading the way in addressing this with our range of recombinant monoclonal antibodies and knockout edited cell lines for gold-standard validation. Please check that this product meets your needs before purchasing.</p> <p>If you have any questions, special requirements or concerns, please send us an inquiry and/or contact our Support team ahead of purchase. Recommended alternatives for this product can be found below, along with publications, customer reviews and Q&As</p>

性能

形式	Liquid
存放说明	Shipped at 4°C. Upon delivery aliquot and store at -20°C or -80°C. Avoid repeated freeze / thaw cycles.
存储溶液	pH: 7.30 Preservative: 0.02% Sodium azide Constituents: Tris buffered saline, 0.5% BSA

纯度	Immunogen affinity purified
纯化说明	Purified from Goat serum by ammonium sulphate precipitation followed by antigen affinity chromatography using the immunizing peptide.
克隆	多克隆
同种型	IgG

应用

The Abpromise guarantee Abpromise™承诺保证使用ab92279于以下的经测试应用

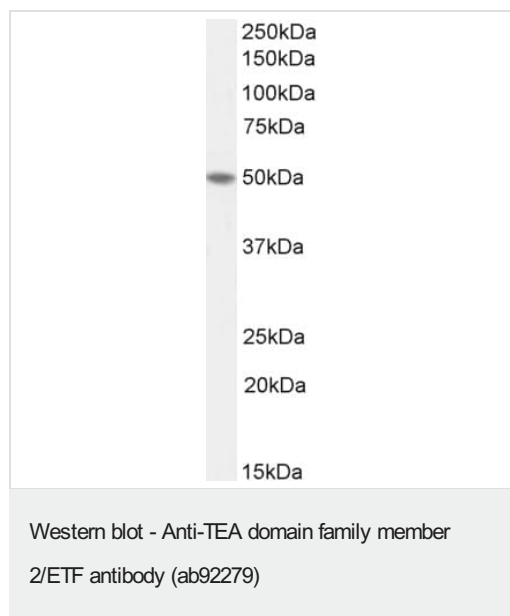
“应用说明”部分 下显示的仅为推荐的起始稀释度;实际最佳的稀释度/浓度应由使用者检定。

应用	Ab评论	说明
WB		Use a concentration of 1 - 3 µg/ml. Detects a band of approximately 50 kDa (predicted molecular weight: 49 kDa). 1 hour primary incubation is recommended for this product.

靶标

功能	Transcription factor which plays a key role in the Hippo signaling pathway, a pathway involved in organ size control and tumor suppression by restricting proliferation and promoting apoptosis. The core of this pathway is composed of a kinase cascade wherein MST1/MST2, in complex with its regulatory protein SAV1, phosphorylates and activates LATS1/2 in complex with its regulatory protein MOB1, which in turn phosphorylates and inactivates YAP1 oncoprotein and WWTR1/TAZ. Acts by mediating gene expression of YAP1 and WWTR1/TAZ, thereby regulating cell proliferation, migration and epithelial mesenchymal transition (EMT) induction. Binds to the SPH and GT-IIIC 'enhansons' (5'-GTGGAATGT-3'). May be involved in the gene regulation of neural development. Binds to the M-CAT motif.
序列相似性	Contains 1 TEA DNA-binding domain.
细胞定位	Nucleus.

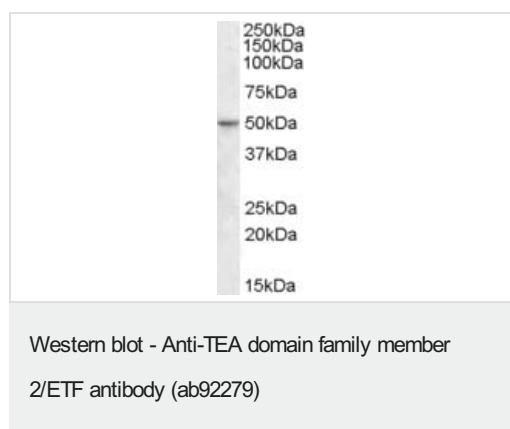
图片



Anti-TEA domain family member 2/ETF antibody (ab92279) at 1 µg/ml + Human colon lysate (35µg protein in RIPA buffer)

Predicted band size: 49 kDa

Detected by chemiluminescence.



Anti-TEA domain family member 2/ETF antibody (ab92279) at 1 µg/ml + Human ileum lysate in RIPA buffer at 35 µg

Developed using the ECL technique.

Predicted band size: 49 kDa

Observed band size: 50 kDa

Please note: All products are "FOR RESEARCH USE ONLY. NOT FOR USE IN DIAGNOSTIC PROCEDURES"

Our Abpromise to you: Quality guaranteed and expert technical support

- Replacement or refund for products not performing as stated on the datasheet
- Valid for 12 months from date of delivery
- Response to your inquiry within 24 hours
- We provide support in Chinese, English, French, German, Japanese and Spanish
- Extensive multi-media technical resources to help you
- We investigate all quality concerns to ensure our products perform to the highest standards

If the product does not perform as described on this datasheet, we will offer a refund or replacement. For full details of the Abpromise, please visit <https://www.abcam.cn/abpromise> or contact our technical team.

Terms and conditions

- Guarantee only valid for products bought direct from Abcam or one of our authorized distributors