


Anti-TCP1 theta antibody ab96321

1 References 2 图像

概述	
产品名称	Anti-TCP1 theta抗体
描述	兔多克隆抗体to TCP1 theta
宿主	Rabbit
经测试应用	适用于: WB, IHC-P
种属反应性	与反应: Human 预测可用于: Mouse, Rat, Cow, Zebrafish 
免疫原	Recombinant fragment, corresponding to a region within internal sequence amino acids 111 - 337 of Human TCP1 theta.
常规说明	<p>The Life Science industry has been in the grips of a reproducibility crisis for a number of years. Abcam is leading the way in addressing this with our range of recombinant monoclonal antibodies and knockout edited cell lines for gold-standard validation. Please check that this product meets your needs before purchasing.</p> <p>If you have any questions, special requirements or concerns, please send us an inquiry and/or contact our Support team ahead of purchase. Recommended alternatives for this product can be found below, along with publications, customer reviews and Q&As</p>
性能	
形式	Liquid
存放说明	Shipped at 4°C. Upon delivery aliquot and store at -20°C. Avoid repeated freeze / thaw cycles.
存储溶液	pH: 7.00 Preservative: 0.01% Thimerosal (merthiolate) Constituents: 78.99% PBS, 1% BSA, 20% Glycerol (glycerin, glycerine)
纯度	Immunogen affinity purified
克隆	多克隆
同种型	IgG
应用	

“应用说明”部分 下显示的仅为推荐的起始稀释度;实际最佳的稀释度/浓度应由使用者检定。

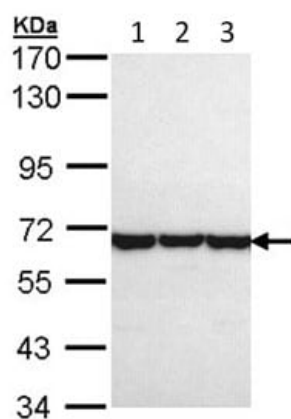
应用	Ab评论	说明
WB		1/500 - 1/3000. Predicted molecular weight: 60 kDa.
IHC-P		1/100 - 1/500.

靶标

相关性 TCP1 theta is the theta polypeptide of the CCT chaperonin molecule complex. The intact CCT complex is composed of eight polypeptides in a double ring. TCP1 theta is a molecular chaperone that assists the folding of proteins upon ATP hydrolysis. CCT is important within cells in aiding the folding of proteins including actin, tubulin and the VHL tumour suppressor protein.

细胞定位 Cytoplasm. Cytoplasm; cytoskeleton; centrosome

图片



Western blot - Anti-TCP1 theta antibody (ab96321)

All lanes : Anti-TCP1 theta antibody (ab96321) at 1/1000 dilution

Lane 1 : A431 whole cell lysate

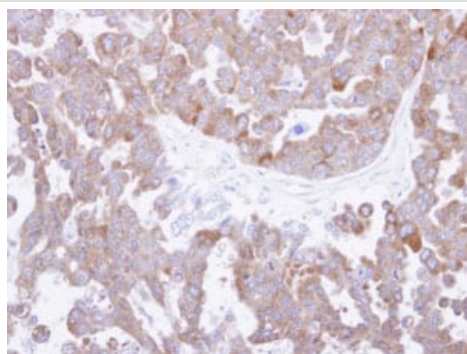
Lane 2 : H1299 whole cell lysate

Lane 3 : HeLa whole cell lysate

Lysates/proteins at 30 µg per lane.

Predicted band size: 60 kDa

7.5% SDS PAGE



Immunohistochemistry analysis of paraffin-embedded OVCAR3 xenograft, using ab96321 at 1/500 dilution.

Immunohistochemistry (Formalin/PFA-fixed paraffin-embedded sections) - Anti-TCP1 theta antibody (ab96321)

Please note: All products are "FOR RESEARCH USE ONLY. NOT FOR USE IN DIAGNOSTIC PROCEDURES"

Our Abpromise to you: Quality guaranteed and expert technical support

- Replacement or refund for products not performing as stated on the datasheet
- Valid for 12 months from date of delivery
- Response to your inquiry within 24 hours

- We provide support in Chinese, English, French, German, Japanese and Spanish
- Extensive multi-media technical resources to help you
- We investigate all quality concerns to ensure our products perform to the highest standards

If the product does not perform as described on this datasheet, we will offer a refund or replacement. For full details of the Abpromise, please visit <https://www.abcam.cn/abpromise> or contact our technical team.

Terms and conditions

- Guarantee only valid for products bought direct from Abcam or one of our authorized distributors