

Anti-TCOF1 antibody ab65212

3 References 2 图像

概述	
产品名称	Anti-TCOF1抗体
描述	兔多克隆抗体to TCOF1
宿主	Rabbit
经测试应用	适用于: WB, IHC-P
种属反应性	与反应: Human
免疫原	Synthetic peptide corresponding to Human TCOF1.
常规说明	<p>The Life Science industry has been in the grips of a reproducibility crisis for a number of years. Abcam is leading the way in addressing this with our range of recombinant monoclonal antibodies and knockout edited cell lines for gold-standard validation. Please check that this product meets your needs before purchasing.</p> <p>If you have any questions, special requirements or concerns, please send us an inquiry and/or contact our Support team ahead of purchase. Recommended alternatives for this product can be found below, along with publications, customer reviews and Q&amp;As</p>
性能	
形式	Liquid
存放说明	Shipped at 4°C. Store at -20°C. Stable for 12 months at -20°C.
存储溶液	pH: 7.40 Preservative: 0.02% Sodium azide Constituents: PBS, 50% Glycerol (glycerin, glycerine), 0.87% Sodium chloride
纯度	Without Mg2+ and Ca2+
克隆	Immunogen affinity purified
同种型	多克隆 IgG
应用	

“应用说明”部分 下显示的仅为推荐的起始稀释度;实际最佳的稀释度/浓度应由使用者检定。

应用	Ab评论	说明
WB		1/500 - 1/1000. Detects a band of approximately 152 kDa (predicted molecular weight: 152 kDa).
IHC-P		1/50 - 1/100.

## 靶标

### 功能

May be involved in nucleolar-cytoplasmic transport. May play a fundamental role in early embryonic development, particularly in development of the craniofacial complex.

### 疾病相关

Defects in TCOF1 are the cause of Treacher Collins syndrome type 1 (TCS1) [MIM:154500]. It is a form of Treacher Collins syndrome, a disorder of craniofacial development. Treacher Collins syndrome is characterized by a combination of bilateral downward slanting of the palpebral fissures, colobomas of the lower eyelids with a paucity of eyelashes medial to the defect, hypoplasia of the facial bones, cleft palate, malformation of the external ears, atresia of the external auditory canals, and bilateral conductive hearing loss.

### 序列相似性

Contains 1 Lish domain.

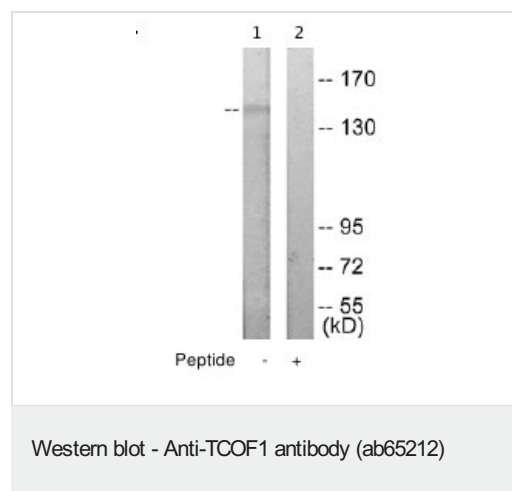
### 翻译后修饰

Phosphorylated upon DNA damage, probably by ATM or ATR.

### 细胞定位

Nucleus > nucleolus.

## 图片



**All lanes :** Anti-TCOF1 antibody (ab65212) at 1/500 dilution

**Lane 1 :** Extracts from Jurkat cells

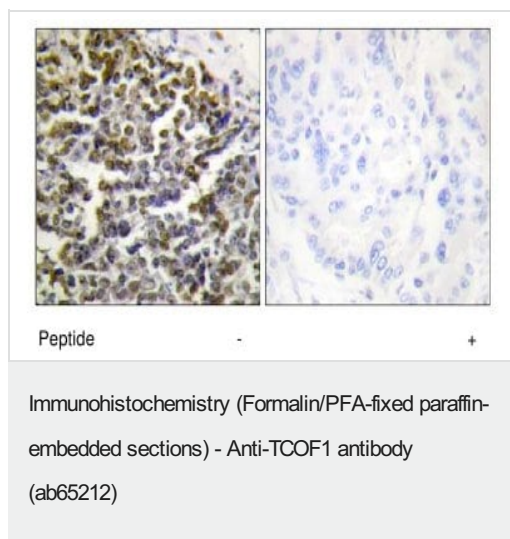
**Lane 2 :** Extracts from Jurkat cells, plus immunising peptide

**Predicted band size:** 152 kDa

**Observed band size:** 152 kDa

The amount of positive control loading for the WB is 5-30 ug of total protein.

The amount of the peptide for the WB is 5-10 ug.



Immunohistochemistry analysis of paraffin-embedded human lung carcinoma tissue using ab65212 at a 1:50 dilution.

Left image untreated.

Right image treated with immunising peptide.

**Please note:** All products are "FOR RESEARCH USE ONLY. NOT FOR USE IN DIAGNOSTIC PROCEDURES"

### Our Abpromise to you: Quality guaranteed and expert technical support

---

- Replacement or refund for products not performing as stated on the datasheet
- Valid for 12 months from date of delivery
- Response to your inquiry within 24 hours
- We provide support in Chinese, English, French, German, Japanese and Spanish
- Extensive multi-media technical resources to help you
- We investigate all quality concerns to ensure our products perform to the highest standards

If the product does not perform as described on this datasheet, we will offer a refund or replacement. For full details of the Abpromise, please visit <https://www.abcam.cn/abpromise> or contact our technical team.

### Terms and conditions

---

- Guarantee only valid for products bought direct from Abcam or one of our authorized distributors