

Anti-Tbx6 antibody ab38883

★★★★★ [3 Abreviews](#) [6 References](#) [1 图像](#)

概述

产品名称	Anti-Tbx6抗体
描述	兔多克隆抗体to Tbx6
宿主	Rabbit
经测试应用	适用于: WB
种属反应性	与反应: Mouse, Human
免疫原	Synthetic peptide corresponding to Mouse Tbx6 aa 1-100 conjugated to keyhole limpet haemocyanin. (Peptide available as ab26243)

常规说明

The Life Science industry has been in the grips of a reproducibility crisis for a number of years. Abcam is leading the way in addressing this with our range of recombinant monoclonal antibodies and knockout edited cell lines for gold-standard validation. Please check that this product meets your needs before purchasing.

If you have any questions, special requirements or concerns, please send us an inquiry and/or contact our Support team ahead of purchase. Recommended alternatives for this product can be found below, along with publications, customer reviews and Q&As

性能

形式	Liquid
存放说明	Shipped at 4°C. Store at +4°C short term (1-2 weeks). Upon delivery aliquot. Store at -20°C or -80°C. Avoid freeze / thaw cycle.
存储溶液	pH: 7.40 Preservative: 0.02% Sodium azide Constituent: PBS
纯度	Immunogen affinity purified
克隆	多克隆
同种型	IgG

应用

The Abpromise guarantee **Abpromise™**承诺保证使用ab38883于以下的经测试应用

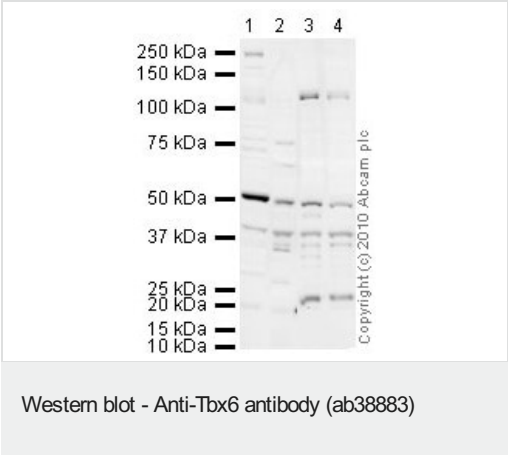
“应用说明”部分 下显示的仅为推荐的起始稀释度;实际最佳的稀释度/浓度应由使用者检定。

应用	Ab评论	说明
WB	★★★★★ (1)	Use a concentration of 1 µg/ml. Detects a band of approximately 70 kDa (predicted molecular weight: 59 kDa).

靶标

功能	Probable transcriptional regulator involved in developmental processes. Could be required for specification of paraxial mesoderm structures during gastrulation.
组织特异性	Expressed in fetal tail bud, posterior spinal tissue, intervertebral disk and testis. Also expressed in adult testis, kidney, lung, muscle and thymus.
序列相似性	Contains 1 T-box DNA-binding domain.
发展阶段	Expressed during gastrulation and during a second phase in some adult tissues.
细胞定位	Nucleus.

图片



All lanes : Anti-Tbx6 antibody (ab38883) at 1 µg/ml

Lane 1 : Testis (Mouse) Tissue Lysate

Lane 2 : Lung (Mouse) Tissue Lysate

Lane 3 : Human testis tissue lysate - total protein ([ab30257](#))

Lane 4 : Lung (Human) Tissue Lysate

Lysates/proteins at 10 µg per lane.

Secondary

All lanes : Goat polyclonal to Rabbit IgG - H&L - Pre-Adsorbed (HRP) at 1/3000 dilution

Performed under reducing conditions.

Predicted band size: 59 kDa

Observed band size: 50 kDa

Additional bands at: 43 kDa. We are unsure as to the identity of these extra bands.

Exposure time: 20 minutes

Please note: All products are "FOR RESEARCH USE ONLY. NOT FOR USE IN DIAGNOSTIC PROCEDURES"

Our Abpromise to you: Quality guaranteed and expert technical support

- Replacement or refund for products not performing as stated on the datasheet
- Valid for 12 months from date of delivery
- Response to your inquiry within 24 hours
- We provide support in Chinese, English, French, German, Japanese and Spanish
- Extensive multi-media technical resources to help you
- We investigate all quality concerns to ensure our products perform to the highest standards

If the product does not perform as described on this datasheet, we will offer a refund or replacement. For full details of the Abpromise, please visit <https://www.abcam.cn/abpromise> or contact our technical team.

Terms and conditions

- Guarantee only valid for products bought direct from Abcam or one of our authorized distributors