

Anti-TBLR1/TBL1XR1 antibody ab24550

★★★★★ 2 Abreviews 11 References 1 图像

概述

产品名称	Anti-TBLR1/TBL1XR1抗体
描述	兔多克隆抗体to TBLR1/TBL1XR1
宿主	Rabbit
特异性	Does not cross-react with TBL1.
经测试应用	适用于: WB
种属反应性	与反应: Human
免疫原	Recombinant full length protein corresponding to Human TBLR1/TBL1XR1.
常规说明	<p>The Life Science industry has been in the grips of a reproducibility crisis for a number of years. Abcam is leading the way in addressing this with our range of recombinant monoclonal antibodies and knockout edited cell lines for gold-standard validation. Please check that this product meets your needs before purchasing.</p> <p>If you have any questions, special requirements or concerns, please send us an inquiry and/or contact our Support team ahead of purchase. Recommended alternatives for this product can be found below, along with publications, customer reviews and Q&As</p>

性能

形式	Liquid
存放说明	Shipped at 4°C. Store at +4°C short term (1-2 weeks). Upon delivery aliquot. Store at -20°C or -80°C. Avoid freeze / thaw cycle.
纯度	Whole antiserum
克隆	多克隆
同种型	IgG

应用

The Abpromise guarantee **Abpromise™**承诺保证使用ab24550于以下的经测试应用

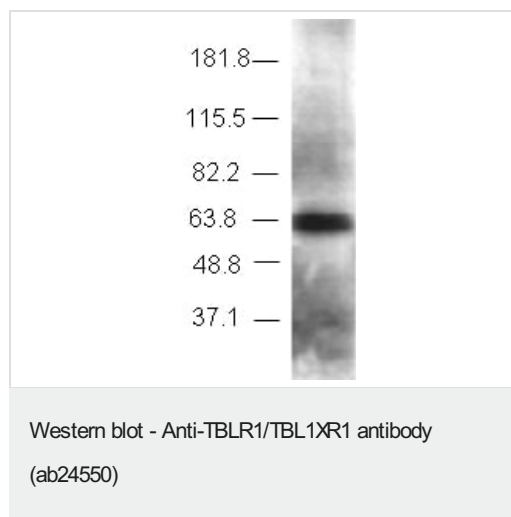
“应用说明”部分 下显示的仅为推荐的起始稀释度;实际最佳的稀释度/浓度应由使用者检定。

应用	Ab评论	说明
WB		1/2000. Detects a band of approximately 64 kDa (predicted molecular weight: 56 kDa).

靶标

功能	F-box-like protein involved in the recruitment of the ubiquitin/19S proteasome complex to nuclear receptor-regulated transcription units. Plays an essential role in transcription activation mediated by nuclear receptors. Probably acts as integral component of the N-Cor corepressor complex that mediates the recruitment of the 19S proteasome complex, leading to the subsequent proteasomal degradation of N-Cor complex, thereby allowing cofactor exchange, and transcription activation.
组织特异性	Ubiquitous.
序列相似性	Belongs to the WD repeat EBI family. Contains 1 F-box-like domain. Contains 1 LisH domain. Contains 8 WD repeats.
结构域	The F-box-like domain is related to the F-box domain, and apparently displays the same function as component of ubiquitin E3 ligase complexes.
翻译后修饰	Phosphorylated upon DNA damage, probably by ATM or ATR.
细胞定位	Nucleus.

图片



Anti-TBLR1/TBL1XR1 antibody (ab24550) at 1/2000 dilution + HeLa nuclear extract

Predicted band size: 56 kDa

Observed band size: 60 kDa

Please note: All products are "FOR RESEARCH USE ONLY. NOT FOR USE IN DIAGNOSTIC PROCEDURES"

Our Abpromise to you: Quality guaranteed and expert technical support

- Replacement or refund for products not performing as stated on the datasheet

- Valid for 12 months from date of delivery
- Response to your inquiry within 24 hours
- We provide support in Chinese, English, French, German, Japanese and Spanish
- Extensive multi-media technical resources to help you
- We investigate all quality concerns to ensure our products perform to the highest standards

If the product does not perform as described on this datasheet, we will offer a refund or replacement. For full details of the Abpromise, please visit <https://www.abcam.cn/abpromise> or contact our technical team.

Terms and conditions

- Guarantee only valid for products bought direct from Abcam or one of our authorized distributors