

Anti-TATA binding protein TBP antibody ab28175

★★★★★ [3 Abreviews](#) [18 References](#) [2 图像](#)

概述

产品名称	Anti-TATA binding蛋白TBP抗体
描述	兔多克隆抗体to TATA binding蛋白TBP
宿主	Rabbit
特异性	Ab28175 recognises TATA binding protein TBP.
经测试应用	适用于: ChIP
种属反应性	与反应: Human
免疫原	Recombinant full length TATA binding protein TBP (Human).
常规说明	<p>The Life Science industry has been in the grips of a reproducibility crisis for a number of years. Abcam is leading the way in addressing this with our range of recombinant monoclonal antibodies and knockout edited cell lines for gold-standard validation. Please check that this product meets your needs before purchasing.</p> <p>If you have any questions, special requirements or concerns, please send us an inquiry and/or contact our Support team ahead of purchase. Recommended alternatives for this product can be found below, along with publications, customer reviews and Q&As</p>

性能

形式	Liquid
存放说明	Shipped at 4°C. Store at +4°C short term (1-2 weeks). Upon delivery aliquot. Store at -20°C. Avoid freeze / thaw cycle.
存储溶液	pH: 7.9 Constituent: PBS
纯度	Protein A purified
克隆	多克隆
同种型	IgG

应用

The Abpromise guarantee Abpromise™ 承诺保证使用ab28175于以下的经测试应用

“应用说明”部分 下显示的仅为推荐的起始稀释度;实际最佳的稀释度/浓度应由使用者检定。

应用	Ab评论	说明
ChIP	★★★★★ (2)	Use 5-10 µg for 25 µg of chromatin.

靶标

功能

General transcription factor that functions at the core of the DNA-binding multiprotein factor TFIID. Binding of TFIID to the TATA box is the initial transcriptional step of the pre-initiation complex (PIC), playing a role in the activation of eukaryotic genes transcribed by RNA polymerase II. Component of the transcription factor SL1/TIF-IB complex, which is involved in the assembly of the PIC (preinitiation complex) during RNA polymerase I-dependent transcription. The rate of PIC formation probably is primarily dependent on the rate of association of SL1 with the rDNA promoter. SL1 is involved in stabilization of nucleolar transcription factor 1/UBTF on rDNA.

组织特异性

Widely expressed, with levels highest in the testis and ovary.

疾病相关

Defects in TBP are the cause of spinocerebellar ataxia type 17 (SCA17) [MIM:607136]. Spinocerebellar ataxia is a clinically and genetically heterogeneous group of cerebellar disorders. Patients show progressive incoordination of gait and often poor coordination of hands, speech and eye movements, due to degeneration of the cerebellum with variable involvement of the brainstem and spinal cord. SCA17 is an autosomal dominant cerebellar ataxia (ADCA) characterized by widespread cerebral and cerebellar atrophy, dementia and extrapyramidal signs. The molecular defect in SCA17 is the expansion of a CAG repeat in the coding region of TBP. Longer expansions result in earlier onset and more severe clinical manifestations of the disease.

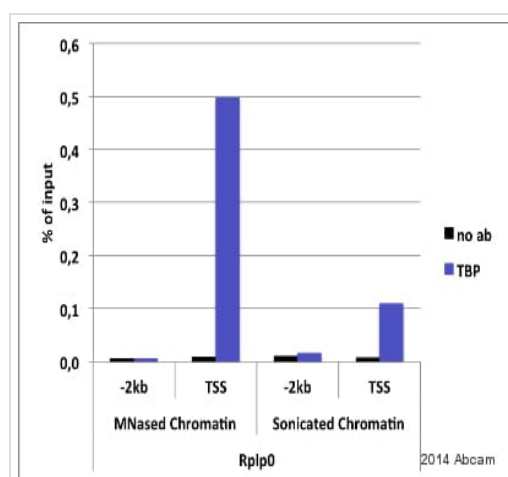
序列相似性

Belongs to the TBP family.

细胞定位

Nucleus.

图片

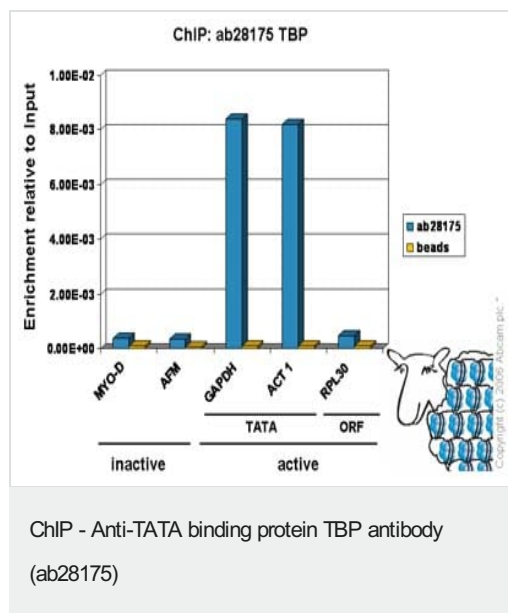


ChIP analysis using ab28175 binding TATA binding protein TBP in mouse liver nuclear tissue lysate. Cells were cross-linked for 10 minutes with 1% paraformaldehyde. Samples were incubated with primary antibody for 16 hours at 4°C in TE pH8, 150mM NaCl, Triton 1%, SDS 0.1%. Protein binding was detected using real-time PCR.

Negative Control: beads.

ChIP - Anti-TATA binding protein TBP antibody (ab28175)

This image is courtesy of an anonymous Abreview



Chromatin was prepared from Hela cells according to the Abcam X-ChIP protocol. Cells were fixed with formaldehyde for 10min. The ChIP was performed with 25µg of chromatin, 8µg of ab28175 (blue), and 20µl of Protein A/G sepharose beads. No antibody was added to the beads control (yellow). The immunoprecipitated DNA was quantified by real time PCR (Taqman and sybr green approach). Primers and probes are located either in the core promoter of the gene (TATA) or in the open reading frame (ORF).

Please note: All products are "FOR RESEARCH USE ONLY. NOT FOR USE IN DIAGNOSTIC PROCEDURES"

Our Abpromise to you: Quality guaranteed and expert technical support

- Replacement or refund for products not performing as stated on the datasheet
- Valid for 12 months from date of delivery
- Response to your inquiry within 24 hours
- We provide support in Chinese, English, French, German, Japanese and Spanish
- Extensive multi-media technical resources to help you
- We investigate all quality concerns to ensure our products perform to the highest standards

If the product does not perform as described on this datasheet, we will offer a refund or replacement. For full details of the Abpromise, please visit <https://www.abcam.cn/abpromise> or contact our technical team.

Terms and conditions

- Guarantee only valid for products bought direct from Abcam or one of our authorized distributors