


Anti-TAK1 (phospho S439) antibody [EPR2863] ab109404

重组 RabMAb

15 References [5 图像](#)

概述

产品名称	Anti-TAK1 (phospho S439)抗体[EPR2863]
描述	兔单克隆抗体[EPR2863] to TAK1 (phospho S439)
宿主	Rabbit
特异性	This antibody only detects TAK1 phosphorylated at Serine 439 in Human or TAK1 phosphorylated at Serine 412 in Mouse.
经测试应用	适用于: Dot blot, WB, IP 不适用于: Flow Cyt, ICC/IF or IHC-P
种属反应性	与反应: Human 预测可用于: Mouse, Rat 
免疫原	Synthetic peptide. This information is proprietary to Abcam and/or its suppliers.
阳性对照	HeLa cell lysate. IP: HeLa treated with 100nM Calyculin A and 20ng/ml human IL-1 beta for 10min whole cell lysate.
常规说明	This product is a recombinant monoclonal antibody, which offers several advantages including: <ul style="list-style-type: none"> - High batch-to-batch consistency and reproducibility - Improved sensitivity and specificity - Long-term security of supply - Animal-free production For more information see here . Our RabMAb [®] technology is a patented hybridoma-based technology for making rabbit monoclonal antibodies. For details on our patents, please refer to RabMAb[®] patents .

性能

形式	Liquid
存放说明	Shipped at 4°C. Store at -20°C. Stable for 12 months at -20°C.
存储溶液	pH: 7.20 Preservative: 0.05% Sodium azide Constituents: 0.1% BSA, 40% Glycerol (glycerin, glycerine), 9.85% Tris glycine, 50% Tissue culture supernatant
纯度	Tissue culture supernatant

克隆 单克隆
克隆编号 EPR2863
同种型 IgG

应用

The Abpromise guarantee **Abpromise™**承诺保证使用ab109404于以下的经测试应用

“应用说明”部分下显示的仅为推荐的起始稀释度;实际最佳的稀释度/浓度应由使用者检定。

应用	Ab评论	说明
Dot blot		Use at an assay dependent concentration.
WB		1/1000 - 1/10000. Detects a band of approximately 75 kDa (predicted molecular weight: 67 kDa).
IP		1/10 - 1/100.

应用说明 Is unsuitable for Flow Cyt, ICC/IF or IHC-P.

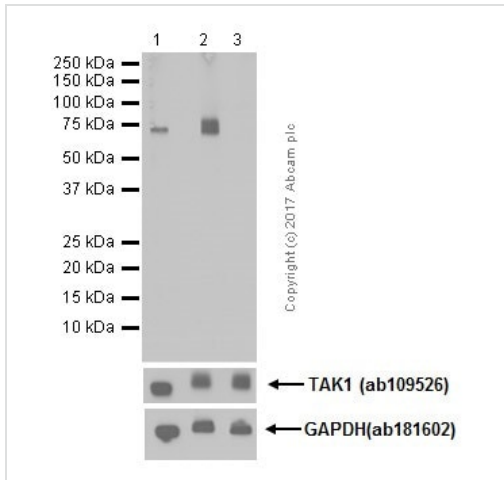
靶标

功能 Component of a protein kinase signal transduction cascade. Mediator of TRAF6 and TGF-beta signal transduction. Activates IKBKB and MAPK8 in response to TRAF6 signaling. Stimulates NF-kappa-B activation and the p38 MAPK pathway. In osmotic stress signaling, plays a major role in the activation of MAPK8/JNK, but not that of NF-kappa-B.

序列相似性 Belongs to the protein kinase superfamily. STE Ser/Thr protein kinase family. MAP kinase kinase subfamily.
Contains 1 protein kinase domain.

翻译后修饰 Association with TAB1/MAP3K7IP1 promotes autophosphorylation and subsequent activation. Association with TAB2/MAP3K7IP2, itself associated with free unanchored Lys-63 polyubiquitin chain, promotes autophosphorylation and subsequent activation of MAP3K7. Dephosphorylation at Thr-187 by PP2A and PPP6C leads to inactivation.
Ubiquitinated, leading to proteasomal degradation (By similarity). Requires 'Lys-63'-linked polyubiquitination for autophosphorylation and subsequent activation. 'Lys-63'-linked ubiquitination does not lead to proteasomal degradation. Deubiquitinated by CYLD, a protease that selectively cleaves 'Lys-63'-linked ubiquitin chains. Deubiquitinated by Y. enterocolitica YopP.

图片



Western blot - Anti-TAK1 (phospho S439) antibody [EPR2863] (ab109404)

All lanes : Anti-TAK1 (phospho S439) antibody [EPR2863] (ab109404) at 1/1000 dilution

Lane 1 : HeLa whole cell lysate

Lane 2 : HeLa treated with 100nM Calyculin A and 20ng/ml human IL-1 β for 10 minutes whole cell lysate

Lane 3 : HeLa treated with 100nM Calyculin A and 20ng/ml human IL-1 β for 10 minutes whole cell lysate. Then the membrane was incubated with alkaline phosphatase.

Lysates/proteins at 10 μ g per lane.

Secondary

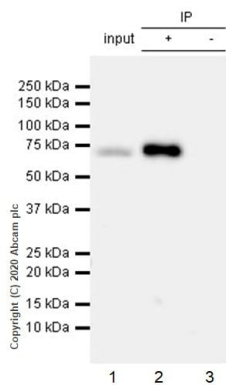
All lanes : Goat Anti-Rabbit IgG H&L (HRP) (**ab97051**) at 1/20000 dilution

Predicted band size: 67 kDa

Observed band size: 75 kDa

Exposure time: 10 seconds

Dilution and blocking buffer: 5% NFD/MTBST.



Immunoprecipitation - Anti-TAK1 (phospho S439) antibody [EPR2863] (ab109404)

Purified ab109404 at 1/50 dilution (2µg) immunoprecipitating TAK1 in HeLa treated with 100nM Calyculin A and 20ng/ml human IL-1 beta for 10min whole cell lysate.

Lane 1 (input): HeLa (Human cervix adenocarcinoma epithelial cell) treated with 100nM Calyculin A and 20ng/ml human IL-1 beta for 10min whole cell lysate 10µg

Lane 2 (+): ab109404 + HeLa treated with 100nM Calyculin A and 20ng/ml human IL-1 beta for 10min whole cell lysate.

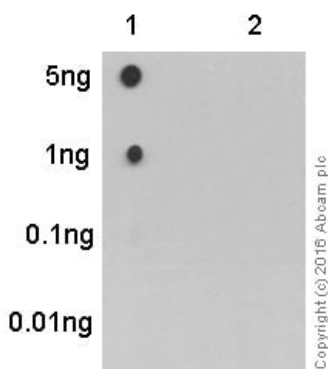
Lane 3 (-): Rabbit monoclonal IgG (**ab172730**) instead of **ab239974** in HeLa treated with 100nM Calyculin A and 20ng/ml human IL-1 beta for 10min whole cell lysate.

VeriBlot for IP Detection Reagent (HRP) (**ab131366**) (1/1000 dilution) was used for Western blotting.

Blocking Buffer and concentration: 5% NFDm/TBST.

Diluting buffer and concentration: 5% NFDm/TBST.

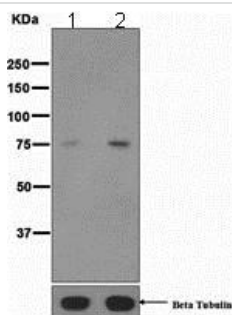
Observed band size: 75 kDa



Dot Blot - Anti-TAK1 (phospho S439) antibody [EPR2863] (ab109404)

Dot Blot analysis of Lane 1: TAK1 (phospho S439) phospho peptide and Lane 2: TAK1 non-phospho peptide labeling TAK1 (phospho S439) with ab109404 at 1/1000 dilution (0.009 µg/ml). 5% NFDm/TBST was used as the diluting and blocking buffer.

ab97051 Goat Anti-Rabbit IgG, (H+L), Peroxidase conjugated was used as the secondary antibody at 1/100,000 dilution. Exposure time: 3 minutes.



Western blot - Anti-TAK1 (phospho S439) antibody [EPR2863] (ab109404)

All lanes : Anti-TAK1 (phospho S439) antibody [EPR2863] (ab109404) at 1/1000 dilution

Lane 1 : HeLa cell lysate

Lane 2 : HeLa cell lysate treated with transforming growth factor-beta (TGF-beta)

Lysates/proteins at 10 µg per lane.

Predicted band size: 67 kDa

Observed band size: 75 kDa

Why choose a recombinant antibody?



Research with confidence
Consistent and reproducible results



Long-term and scalable supply
Recombinant technology



Success from the first experiment
Confirmed specificity



Ethical standards compliant
Animal-free production

Anti-TAK1 (phospho S439) antibody [EPR2863]
(ab109404)

Please note: All products are "FOR RESEARCH USE ONLY. NOT FOR USE IN DIAGNOSTIC PROCEDURES"

Our Abpromise to you: Quality guaranteed and expert technical support

- Replacement or refund for products not performing as stated on the datasheet
- Valid for 12 months from date of delivery
- Response to your inquiry within 24 hours
- We provide support in Chinese, English, French, German, Japanese and Spanish
- Extensive multi-media technical resources to help you
- We investigate all quality concerns to ensure our products perform to the highest standards

If the product does not perform as described on this datasheet, we will offer a refund or replacement. For full details of the Abpromise, please visit <https://www.abcam.cn/abpromise> or contact our technical team.

Terms and conditions

- Guarantee only valid for products bought direct from Abcam or one of our authorized distributors