


# Anti-Tafazzin / TAZ antibody ab40004

[1 References](#) [1 图像](#)

### 概述

产品名称	Anti-Tafazzin / TAZ抗体
描述	山羊多克隆抗体to Tafazzin / TAZ
宿主	Goat
特异性	This antibody is expected to recognise isoforms 1 to 4. (NP_000107.1; NP_851828.1; NP_851829.1; NP_851830.1, respectively).
经测试应用	<b>适用于:</b> WB
种属反应性	<b>与反应:</b> Human <b>预测可用于:</b> Mouse, Rat, Dog, Chimpanzee 
免疫原	Synthetic peptide: C-HLKTQAEQLHNNH (Human) from the C Terminus of the protein sequence (according to NP_000107.1; NP_851828.1; NP_851829.1; NP_851830.1.). <a href="#">Run BLAST with</a> <a href="#">Run BLAST with</a>
阳性对照	Recombinant Human Tafazzin / TAZ protein ( <a href="#">ab114664</a> ) can be used as a positive control in WB. Human heart lysate.
常规说明	<p>The Life Science industry has been in the grips of a reproducibility crisis for a number of years. Abcam is leading the way in addressing this with our range of recombinant monoclonal antibodies and knockout edited cell lines for gold-standard validation. Please check that this product meets your needs before purchasing.</p> <p>If you have any questions, special requirements or concerns, please send us an inquiry and/or contact our Support team ahead of purchase. Recommended alternatives for this product can be found below, along with publications, customer reviews and Q&amp;As</p>

### 性能

形式	Liquid
存放说明	Shipped at 4°C. Upon delivery aliquot and store at -20°C. Avoid freeze / thaw cycles.
存储溶液	pH: 7.30 Preservative: 0.02% Sodium azide Constituents: 0.5% BSA, Tris buffered saline
纯度	Immunogen affinity purified

克隆 多克隆  
同种型 IgG

## 应用

**The Abpromise guarantee** **Abpromise™** 承诺保证使用ab40004于以下的经测试应用

“应用说明”部分 下显示的仅为推荐的起始稀释度;实际最佳的稀释度/浓度应由使用者检定。

应用	Ab评论	说明
WB		

### 应用说明

ELISA: 1/32000 - antibody limit dilution.

WB: Use at a concentration of 0.3 - 1 µg/ml. Detects a band of approximately 28 kDa (predicted molecular weight: 33 kDa).

Not yet tested in other applications.

Optimal dilutions/concentrations should be determined by the end user.

## 靶标

### 功能

Some isoforms may be involved in cardiolipin (CL) metabolism.

### 组织特异性

High levels in cardiac and skeletal muscle. Up to 10 isoforms can be present in different amounts in different tissues. Most isoforms are ubiquitous. Isoforms that lack the N-terminus are found in leukocytes and fibroblasts, but not in heart and skeletal muscle. Some forms appear restricted to cardiac and skeletal muscle or to leukocytes.

### 疾病相关

Barth syndrome

### 序列相似性

Belongs to the taffazin family.

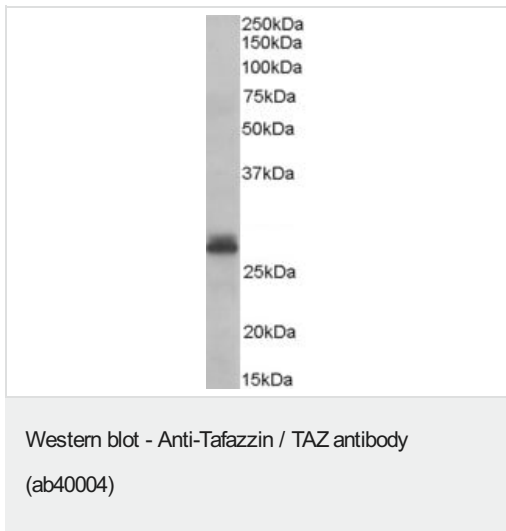
### 结构域

The hydrophilic domain may serve as an exposed loop interacting with other proteins.

### 细胞定位

Cytoplasm and Membrane.

## 图片



Anti-Tafazzin / TAZ antibody (ab40004) at 0.3 µg/ml + Human Heart lysate in RIPA buffer at 35 µg

**Predicted band size:** 33 kDa

**Observed band size:** 28 kDa

Primary incubation was 1 hour. Detected by chemiluminescence.

**Please note:** All products are "FOR RESEARCH USE ONLY. NOT FOR USE IN DIAGNOSTIC PROCEDURES"

### Our Abpromise to you: Quality guaranteed and expert technical support

---

- Replacement or refund for products not performing as stated on the datasheet
- Valid for 12 months from date of delivery
- Response to your inquiry within 24 hours
- We provide support in Chinese, English, French, German, Japanese and Spanish
- Extensive multi-media technical resources to help you
- We investigate all quality concerns to ensure our products perform to the highest standards

If the product does not perform as described on this datasheet, we will offer a refund or replacement. For full details of the Abpromise, please visit <https://www.abcam.cn/abpromise> or contact our technical team.

### Terms and conditions

---

- Guarantee only valid for products bought direct from Abcam or one of our authorized distributors