


Anti-TAB3 antibody ab85655

★★★★★ [3 Abreviews](#) [7 References](#) [2 图像](#)

概述

产品名称	Anti-TAB3抗体
描述	兔多克隆抗体to TAB3
宿主	Rabbit
经测试应用	适用于: WB, IP
种属反应性	与反应: Mouse, Human 预测可用于: Horse, Dog, Pig, Chimpanzee, Ferret, Gorilla, Chinese hamster, Orangutan, Elephant 
免疫原	Synthetic peptide, corresponding to amino acids 600-650 of Human TAB3
常规说明	<p>The Life Science industry has been in the grips of a reproducibility crisis for a number of years. Abcam is leading the way in addressing this with our range of recombinant monoclonal antibodies and knockout edited cell lines for gold-standard validation. Please check that this product meets your needs before purchasing.</p> <p>If you have any questions, special requirements or concerns, please send us an inquiry and/or contact our Support team ahead of purchase. Recommended alternatives for this product can be found below, along with publications, customer reviews and Q&As</p>

性能

形式	Liquid
存放说明	Shipped at 4°C. Upon delivery aliquot and store at -20°C. Avoid freeze / thaw cycles.
存储溶液	pH: 7 Preservative: 0.09% Sodium azide Constituent: Tris citrate/phosphate
纯度	Immunogen affinity purified
克隆	多克隆
同种型	IgG

应用

The Abpromise guarantee

Abpromise™ 承诺保证使用ab85655于以下的经测试应用

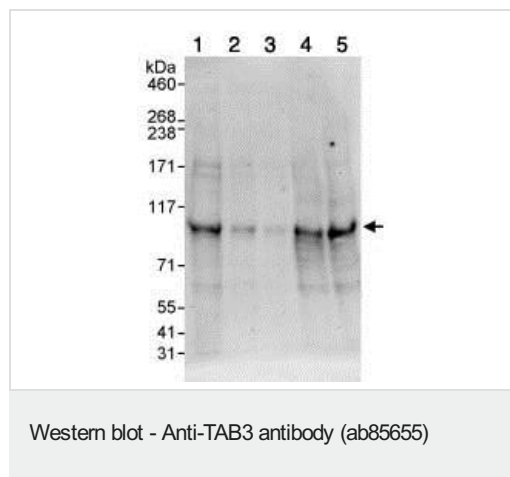
“应用说明”部分 下显示的仅为推荐的起始稀释度;实际最佳的稀释度/浓度应由使用者检定。

应用	Ab评论	说明
WB	★★★★★ (2)	1/2000 - 1/10000. Predicted molecular weight: 79 kDa.
IP		Use at 5-10 µg/mg of lysate.

靶标

功能	Adapter linking MAP3K7/TAK1 and TRAF6 or TRAF2. Mediator of MAP3K7 activation, respectively in the IL1 and TNF signaling pathways. Plays a role in activation of NF-kappa-B and AP1 transcription factor. Isoform 2 may be an oncogenic factor.
组织特异性	Widely expressed. Constitutively overexpressed in certain tumor tissues. Isoform 1 is a major transcript while isoform 2 is a minor transcript.
序列相似性	Contains 1 CUE domain. Contains 1 RanBP2-type zinc finger.
翻译后修饰	Ubiquitinated; following IL1 stimulation or TRAF6 overexpression.

图片



All lanes : Anti-TAB3 antibody (ab85655) at 0.4 µg/ml

Lane 1 : HeLa whole cell lysate at 50 µg

Lane 2 : HeLa whole cell lysate at 15 µg

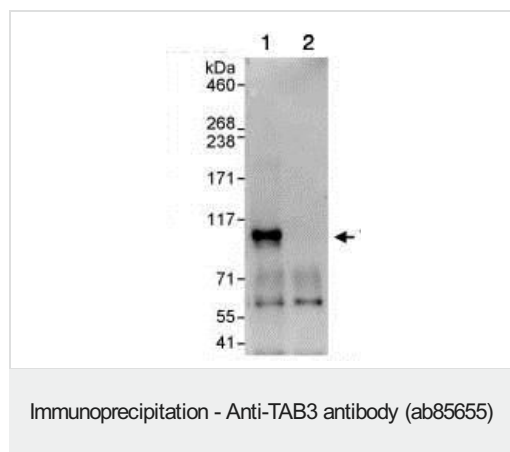
Lane 3 : HeLa whole cell lysate at 5 µg

Lane 4 : 293T whole cell lysate at 50 µg

Lane 5 : NIH3T3 whole cell lysate at 50 µg

Predicted band size: 79 kDa

Exposure time: 30 seconds



1mg whole cell lysate from HeLa cells was immunoprecipitated using 10µg ab85655.

20% of the immunoprecipitate was loaded in each lane, and probed with ab85655 at 1µg/ml (lane 1) or with a control IgG (lane 2).

Detection: chemoluminescence, with an exposure time of 30 seconds.

Please note: All products are "FOR RESEARCH USE ONLY. NOT FOR USE IN DIAGNOSTIC PROCEDURES"

Our Abpromise to you: Quality guaranteed and expert technical support

- Replacement or refund for products not performing as stated on the datasheet
- Valid for 12 months from date of delivery
- Response to your inquiry within 24 hours

- We provide support in Chinese, English, French, German, Japanese and Spanish
- Extensive multi-media technical resources to help you
- We investigate all quality concerns to ensure our products perform to the highest standards

If the product does not perform as described on this datasheet, we will offer a refund or replacement. For full details of the Abpromise, please visit <https://www.abcam.cn/abpromise> or contact our technical team.

Terms and conditions

- Guarantee only valid for products bought direct from Abcam or one of our authorized distributors