


Anti-T Plastin/PLS3 antibody ab137585

★★★★★ [3 Abreviews](#) [7 References](#) [3 图像](#)

概述

产品名称	Anti-T Plastin/PLS3抗体
描述	兔多克隆抗体 to T Plastin/PLS3
宿主	Rabbit
特异性	ab137585 may also detect Plastin L as the sequence shows 82% identity.
经测试应用	适用于: WB, ICC/IF
种属反应性	与反应: Mouse, Human 预测可用于: Rat, Xenopus laevis, Zebrafish, Xenopus tropicalis 
免疫原	Recombinant fragment corresponding to Human T Plastin/PLS3 aa 66-371. Database link: P13797
常规说明	<p>The Life Science industry has been in the grips of a reproducibility crisis for a number of years. Abcam is leading the way in addressing this with our range of recombinant monoclonal antibodies and knockout edited cell lines for gold-standard validation. Please check that this product meets your needs before purchasing.</p> <p>If you have any questions, special requirements or concerns, please send us an inquiry and/or contact our Support team ahead of purchase. Recommended alternatives for this product can be found below, along with publications, customer reviews and Q&As</p>

性能

形式	Liquid
存放说明	Shipped at 4°C. Upon delivery aliquot and store at -20°C. Avoid freeze / thaw cycles.
存储溶液	pH: 7.00 Preservative: 0.025% Proclin 300 Constituents: 78% PBS, 1% BSA, 20% Glycerol (glycerin, glycerine)
纯度	Immunogen affinity purified
克隆	多克隆
同种型	IgG

应用

The Abpromise guarantee

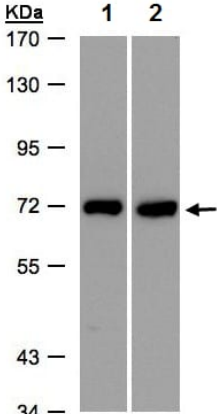
Abpromise™承诺保证使用ab137585于以下的经测试应用

“应用说明”部分 下显示的仅为推荐的起始稀释度;实际最佳的稀释度/浓度应由使用者检定。

应用	Ab评论	说明
WB	★★★★★ (2)	1/500 - 1/3000. Predicted molecular weight: 71 kDa.
ICC/IF		1/100 - 1/1000.

靶标	
功能	Actin-bundling protein found in intestinal microvilli, hair cell stereocilia, and fibroblast filopodia.
组织特异性	Expressed in a variety of organs, including muscle, brain, uterus and esophagus.
序列相似性	Contains 2 actin-binding domains. Contains 4 CH (calponin-homology) domains. Contains 2 EF-hand domains.
翻译后修饰	Phosphorylated upon DNA damage, probably by ATM or ATR.
细胞定位	Cytoplasm.

图片



Western blot - Anti-T Plastin/PLS3 antibody (ab137585)

All lanes : Anti-T Plastin/PLS3 antibody (ab137585) at 1/500 dilution

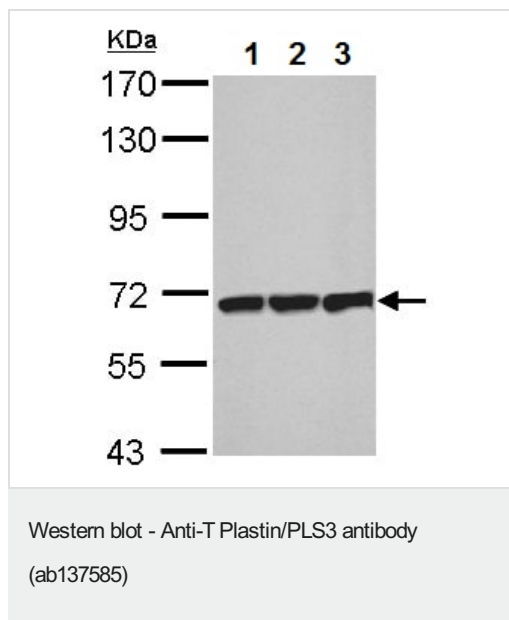
Lane 1 : HeLa S3 whole cell lysate

Lane 2 : Raji whole cell lysate

Lysates/proteins at 30 µg per lane.

Predicted band size: 71 kDa

7.5% SDS PAGE



All lanes : Anti-T Plastin/PLS3 antibody (ab137585) at 1/1000 dilution

Lane 1 : NIH-3T3 whole cell lysate

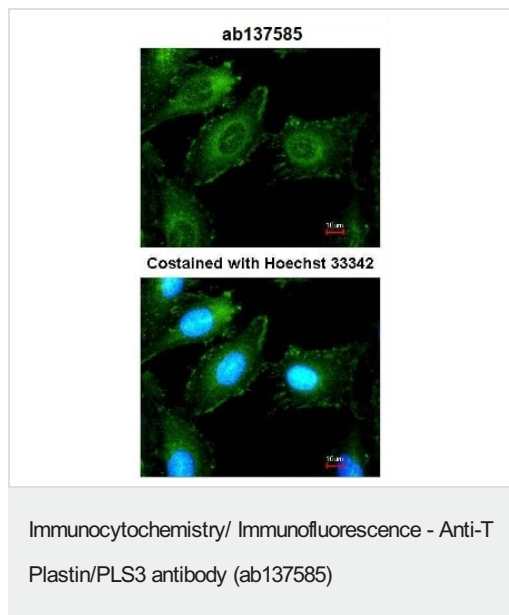
Lane 2 : JC whole cell lysate

Lane 3 : BCL-1 whole cell lysate

Lysates/proteins at 30 µg per lane.

Predicted band size: 71 kDa

7.5% SDS PAGE



Immunofluorescence analysis of methanol-fixed HeLa cells labelling T Plastin/PLS3 with ab137585 at 1/200 dilution.

Please note: All products are "FOR RESEARCH USE ONLY. NOT FOR USE IN DIAGNOSTIC PROCEDURES"

Our Abpromise to you: Quality guaranteed and expert technical support

- Replacement or refund for products not performing as stated on the datasheet
- Valid for 12 months from date of delivery

- Response to your inquiry within 24 hours
- We provide support in Chinese, English, French, German, Japanese and Spanish
- Extensive multi-media technical resources to help you
- We investigate all quality concerns to ensure our products perform to the highest standards

If the product does not perform as described on this datasheet, we will offer a refund or replacement. For full details of the Abpromise, please visit <https://www.abcam.cn/abpromise> or contact our technical team.

Terms and conditions

- Guarantee only valid for products bought direct from Abcam or one of our authorized distributors