

# Anti-T-bet / Tbx21 antibody [39D, 3-9D] ab91103

[2 References](#) [4 图像](#)

### 概述

<b>产品名称</b>	Anti-T-bet / Tbx21抗体[39D, 3-9D]
<b>描述</b>	小鼠单克隆抗体[39D, 3-9D] to T-bet / Tbx21
<b>宿主</b>	Mouse
<b>经测试应用</b>	<b>适用于:</b> WB, ICC, ChIP
<b>种属反应性</b>	<b>与反应:</b> Mouse, Human
<b>免疫原</b>	Recombinant full length protein corresponding to T-bet/ Tbx21. Recombinant protein purified from E.coli
<b>阳性对照</b>	WB: Th1-polarized mouse CD4+ T cells, NK-92 cell lysate ICC: NK-92 cells ChIP: NK-92 cells
<b>常规说明</b>	<p>The Life Science industry has been in the grips of a reproducibility crisis for a number of years. Abcam is leading the way in addressing this with our range of recombinant monoclonal antibodies and knockout edited cell lines for gold-standard validation. Please check that this product meets your needs before purchasing.</p> <p>If you have any questions, special requirements or concerns, please send us an inquiry and/or contact our Support team ahead of purchase. Recommended alternatives for this product can be found below, along with publications, customer reviews and Q&amp;As</p>

### 性能

<b>形式</b>	Liquid
<b>存放说明</b>	Shipped at 4°C. Store at +4°C short term (1-2 weeks). Store at -20°C or -80°C. Avoid freeze / thaw cycle.
<b>存储溶液</b>	pH: 7.20 Preservative: 0.09% Sodium azide Constituent: PBS
<b>纯度</b>	Protein G purified
<b>克隆</b>	单克隆
<b>克隆编号</b>	39D, 3-9D
<b>同种型</b>	IgG1

### 应用

## The Abpromise guarantee

**Abpromise™** 承诺保证使用 ab91103 于以下的经测试应用

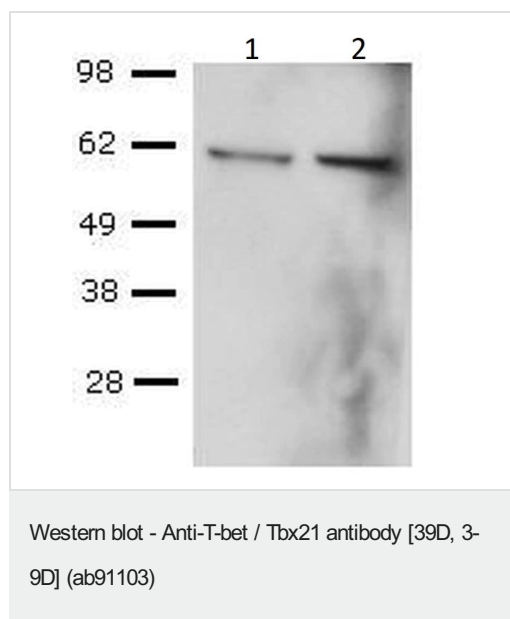
“应用说明”部分 下显示的仅为推荐的起始稀释度；实际最佳的稀释度/浓度应由使用者检定。

应用	Ab评论	说明
WB		Use a concentration of 2 µg/ml. Predicted molecular weight: 58 kDa.
ICC		Use a concentration of 5 µg/ml.
ChIP		Use 2.5µg for 10 <sup>6</sup> cells.

## 靶标

<b>功能</b>	Transcription factor that controls the expression of the TH1 cytokine, interferon-gamma. Initiates TH1 lineage development from naive TH precursor cells both by activating TH1 genetic programs and by repressing the opposing TH2 programs.
<b>组织特异性</b>	T-cell specific.
<b>疾病相关</b>	Genetic variations in TBX21 are associated with susceptibility to asthma with nasal polyps and aspirin intolerance (ANPAI) [MIM:208550]. A condition consisting of asthma, aspirin sensitivity and nasal polyposis. Nasal polyposis is due to chronic inflammation of the paranasal sinus mucosa, leading to protrusion of edematous polyps into the nasal cavities.
<b>序列相似性</b>	Contains 1 T-box DNA-binding domain.
<b>细胞定位</b>	Nucleus.

## 图片



**All lanes :** Anti-T-bet / Tbx21 antibody [39D, 3-9D] (ab91103) at 2 µg/ml

**Lane 1 :** Lysates from control cells

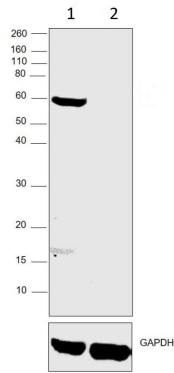
**Lane 2 :** Lysates from PMA and Ionomycin-re-activated cells

### Secondary

**All lanes :** HRP anti-mouse IgG

**Predicted band size:** 58 kDa

CD4<sup>+</sup> T cells were sorted from mouse spleen, activated with anti-mouse CD3 and anti-mouse CD28, followed by culture in Th1-polarizing conditions, and re-activation with PMA and Ionomycin.



Western blot - Anti-T-bet / Tbx21 antibody [39D, 3-9D] (ab91103)

**All lanes :** Anti-T-bet / Tbx21 antibody [39D, 3-9D] (ab91103) at 2 µg/ml

**Lane 1 :** NK-92 cell lysates

**Lane 2 :** K-562 cell lysates

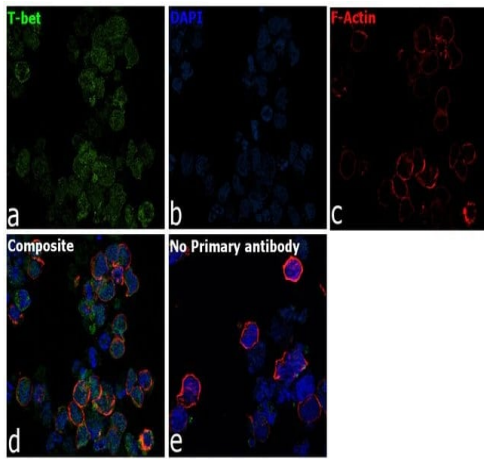
Lysates/proteins at 30 µg per lane.

**Secondary**

**All lanes :** Goat anti-Mouse IgG (H+L), Superclonal™

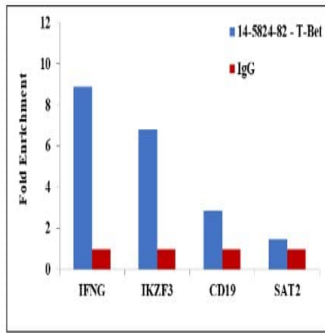
Recombinant, HRP at 1/4000 dilution

**Predicted band size:** 58 kDa



Immunocytochemistry - Anti-T-bet / Tbx21 antibody [39D, 3-9D] (ab91103)

Immunocytochemistry analysis of T-bet/ Tbx21 was performed using 70% confluent log phase NK-92 cells. The cells were fixed with 4% paraformaldehyde for 10 Minutes, permeabilized with 0.1% Triton™ X-100 for 15 minutes, and blocked with 2% BSA for 1 hour at room temperature. The cells were labeled with ab91103 at 5 µg/mL in 0.1% BSA, incubated at 4 degree Celsius overnight and then labeled with Goat anti-Mouse IgG (H+L), Superclonal™ Recombinant Secondary Antibody, Alexa Fluor 488 at a dilution of 1/2000 for 45 minutes at room temperature (Panel a: green). Nuclei (Panel b: blue) were stained with ProLong™ Diamond Antifade Mountant with DAPI. F-actin (Panel c: red) was stained with Rhodamine Phalloidin. Panel d represents the merged image showing nuclear localization. Panel e represents control cells with no primary antibody to assess background. The images were captured at 60X magnification.



ChIP - Anti-T-bet / Tbx21 antibody [39D, 3-9D]  
(ab91103)

Chromatin Immunoprecipitation (ChIP) assay of endogenous T-bet protein using Anti-T-bet Antibody: ChIP was performed using ab91103 at 5 µg on sheared chromatin from NK-92 cells using the MAGnify ChIP System kit. Normal Mouse IgG was used as a negative IP control. The purified DNA was analyzed by qPCR using primers binding to IFNG promoter, IKZF3 and CD19 transcriptional start site and SAT2 satellite repeats. Data is presented as fold enrichment of the antibody signal versus the negative control IgG using the comparative CT method.

**Please note:** All products are "FOR RESEARCH USE ONLY. NOT FOR USE IN DIAGNOSTIC PROCEDURES"

### Our Abpromise to you: Quality guaranteed and expert technical support

- Replacement or refund for products not performing as stated on the datasheet
- Valid for 12 months from date of delivery
- Response to your inquiry within 24 hours
- We provide support in Chinese, English, French, German, Japanese and Spanish
- Extensive multi-media technical resources to help you
- We investigate all quality concerns to ensure our products perform to the highest standards

If the product does not perform as described on this datasheet, we will offer a refund or replacement. For full details of the Abpromise, please visit <https://www.abcam.cn/abpromise> or contact our technical team.

### Terms and conditions

- Guarantee only valid for products bought direct from Abcam or one of our authorized distributors