


Anti-SYT11 antibody ab110766

1 图像

概述

| | |
|-------|---|
| 产品名称 | Anti-SYT11抗体 |
| 描述 | 兔多克隆抗体to SYT11 |
| 宿主 | Rabbit |
| 经测试应用 | 适用于: WB |
| 种属反应性 | 与反应: Human 预测可用于: Mouse, Rat  |
| 免疫原 | Synthetic peptide derived from internal sequence of Human SYT11. |
| 阳性对照 | Extracts from COLO205 cells |
| 常规说明 | <p>The Life Science industry has been in the grips of a reproducibility crisis for a number of years. Abcam is leading the way in addressing this with our range of recombinant monoclonal antibodies and knockout edited cell lines for gold-standard validation. Please check that this product meets your needs before purchasing.</p> <p>If you have any questions, special requirements or concerns, please send us an inquiry and/or contact our Support team ahead of purchase. Recommended alternatives for this product can be found below, along with publications, customer reviews and Q&As</p> |

性能

| | |
|------|--|
| 形式 | Liquid |
| 存放说明 | Shipped at 4°C. Store at -20°C. Stable for 12 months at -20°C. |
| 存储溶液 | pH: 7.40 Preservative: 0.02% Sodium azide Constituents: PBS, 0.88% Sodium chloride, 50% Glycerol (glycerin, glycerine) |
| 纯度 | Immunogen affinity purified |
| 克隆 | 多克隆 |
| 同种型 | IgG |

应用

The Abpromise guarantee

Abpromise™ 承诺保证使用ab110766于以下的经测试应用

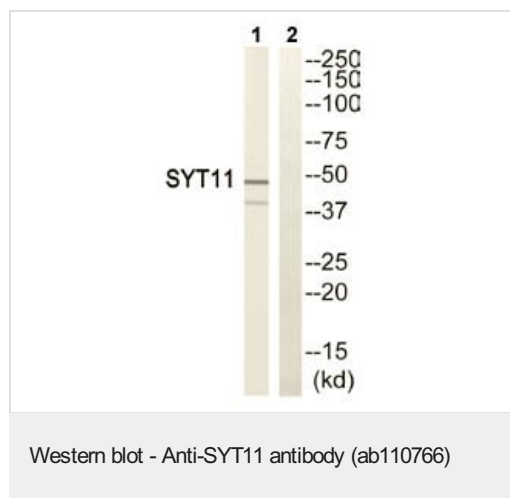
“应用说明”部分 下显示的仅为推荐的起始稀释度;实际最佳的稀释度/浓度应由使用者检定。

| 应用 | Ab评论 | 说明 |
|----|------|---|
| WB | | 1/500 - 1/1000. Predicted molecular weight: 48 kDa. |

靶标

| | |
|--------------|---|
| 功能 | May be involved in Ca(2+)-dependent exocytosis of secretory vesicles through Ca(2+) and phospholipid binding to the C2 domain or may serve as Ca(2+) sensors in the process of vesicular trafficking and exocytosis. |
| 序列相似性 | Belongs to the synaptotagmin family. Contains 2 C2 domains. |
| 翻译后修饰 | Ubiquitinated and targeted to the proteasome complex for degradation. |
| 细胞定位 | Membrane. Cell junction > synapse. Cytoplasmic vesicle > secretory vesicle > synaptic vesicle membrane. In substantia nigra, observed in neuronal cell bodies and neurites. Found in the core of the Lewy bodies in the brain of sporadic Parkinson disease patients. |

图片



All lanes : Anti-SYT11 antibody (ab110766) at 1/500 dilution

Lane 1 : Extracts from COLO205 cells

Lane 2 : Extracts from COLO205 cells with immunising peptide at 10 µg

Lysates/proteins at 30 µg per lane.

Predicted band size: 48 kDa

Please note: All products are "FOR RESEARCH USE ONLY. NOT FOR USE IN DIAGNOSTIC PROCEDURES"

Our Abpromise to you: Quality guaranteed and expert technical support

- Replacement or refund for products not performing as stated on the datasheet
- Valid for 12 months from date of delivery
- Response to your inquiry within 24 hours
- We provide support in Chinese, English, French, German, Japanese and Spanish
- Extensive multi-media technical resources to help you
- We investigate all quality concerns to ensure our products perform to the highest standards

If the product does not perform as described on this datasheet, we will offer a refund or replacement. For full details of the Abpromise, please visit <https://www.abcam.cn/abpromise> or contact our technical team.

Terms and conditions

- Guarantee only valid for products bought direct from Abcam or one of our authorized distributors