


Anti-Syntenin antibody ab19903

敲除 验证

★★★★☆ 4 Abreviews 36 References 4 图像

概述

产品名称	Anti-Syntenin抗体
描述	兔多克隆抗体to Syntenin
宿主	Rabbit
经测试应用	适用于: ICC/IF, WB
种属反应性	与反应: Mouse, Rat, Human 预测可用于: Xenopus laevis, Monkey, Zebrafish 
免疫原	Synthetic peptide. This information is proprietary to Abcam and/or its suppliers.
常规说明	<p>The Life Science industry has been in the grips of a reproducibility crisis for a number of years. Abcam is leading the way in addressing this with our range of recombinant monoclonal antibodies and knockout edited cell lines for gold-standard validation. Please check that this product meets your needs before purchasing.</p> <p>If you have any questions, special requirements or concerns, please send us an inquiry and/or contact our Support team ahead of purchase. Recommended alternatives for this product can be found below, along with publications, customer reviews and Q&As</p>

性能

形式	Liquid
存放说明	Shipped at 4°C. Store at +4°C short term (1-2 weeks). Upon delivery aliquot. Store at -20°C or -80°C. Avoid freeze / thaw cycle.
存储溶液	pH: 7.40 Preservative: 0.02% Sodium azide Constituent: PBS Batches of this product that have a concentration < 1mg/ml may have BSA added as a stabilising agent. If you would like information about the formulation of a specific lot, please contact our scientific support team who will be happy to help.
纯度	Immunogen affinity purified
克隆	多克隆

同种型

IgG

应用

The Abpromise guarantee **Abpromise™** 承诺保证使用 ab19903 于以下的经测试应用

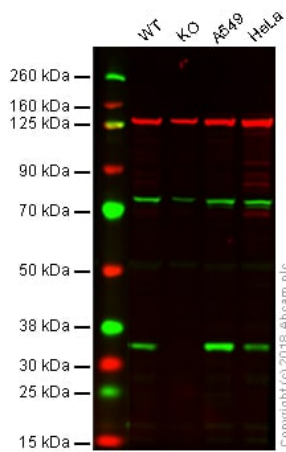
“应用说明”部分 下显示的仅为推荐的起始稀释度；实际最佳的稀释度/浓度应由使用者检定。

应用	Ab评论	说明
ICC/IF	★★★★☆ (1)	Use a concentration of 1 µg/ml.
WB	★★★★☆ (1)	Use a concentration of 1 µg/ml. Detects a band of approximately 32 kDa (predicted molecular weight: 32 kDa).

靶标

功能	Seems to function as an adapter protein. In adherens junctions may function to couple syndecans to cytoskeletal proteins or signaling components. Seems to couple transcription factor SOX4 to the IL-5 receptor (IL5RA). May also play a role in vesicular trafficking. Seems to be required for the targeting of TGFA to the cell surface in the early secretory pathway.
组织特异性	Widely expressed. Expressed in fetal kidney, liver, lung and brain. In adult highest expression in heart and placenta.
序列相似性	Contains 2 PDZ (DHR) domains.
翻译后修饰	Phosphorylated on tyrosine residues.
细胞定位	Cell junction > focal adhesion. Cell junction > adherens junction. Cell membrane. Endoplasmic reticulum membrane. Nucleus. Melanosome. Cytoplasm > cytosol. Cytoplasm > cytoskeleton. Mainly membrane-associated. Localized to adherens junctions, focal adhesions and endoplasmic reticulum. Colocalized with actin stress fibers. Also found in the nucleus. Identified by mass spectrometry in melanosome fractions from stage I to stage IV.

图片



Western blot - Anti-Syntenin antibody (ab19903)

Lane 1: Wild-type HAP1 whole cell lysate (20 µg)

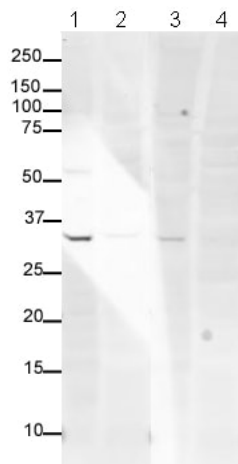
Lane 2: Syntenin knockout HAP1 whole cell lysate (20 µg)

Lane 3: A549 whole cell lysate (20 µg)

Lane 4: HeLa whole cell lysate (20 µg)

Lanes 1-4: Merged signal (red and green). Green - ab19903 observed at 32 kDa. Red - loading control, **ab130007**, observed at 130 kDa.

ab19903 was shown to recognize Syntenin in wild-type HAP1 cells as signal was lost at the expected MW in Syntenin knockout cells. Additional cross-reactive bands were observed in the wild-type and knockout cells. Wild-type and Syntenin knockout samples were subjected to SDS-PAGE. ab19903 and **ab130007** (Mouse anti-Vinculin loading control) were incubated overnight at 4°C at 1 µg/ml and 1/20000 dilution respectively. Blots were developed with Goat anti-Rabbit IgG H&L (IRDye® 800CW) preabsorbed **ab216773** and Goat anti-Mouse IgG H&L (IRDye® 680RD) preabsorbed **ab216776** secondary antibodies at 1/20000 dilution for 1 hour at room temperature before imaging.



Western blot - Anti-Syntenin antibody (ab19903)

All lanes : Anti-Syntenin antibody (ab19903) at 1 µg/ml

Lane 1 : HEK-293 cell lysate

Lane 2 : Human heart tissue lysate

Lane 3 : HEK-293 cell lysate with Mouse Syntenin peptide (**ab20431**) at 1 µg/ml

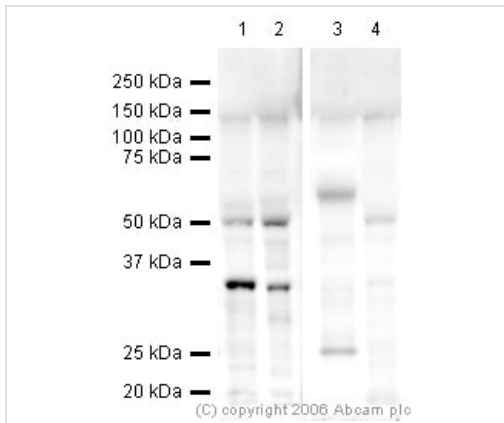
Lane 4 : Human heart tissue lysate with Mouse Syntenin peptide (**ab20431**) at 1 µg/ml

Lysates/proteins at 20 µg per lane.

Performed under reducing conditions.

Predicted band size: 32 kDa

ab19903 detects a band of the expected size (32kDa) in HEK-293 cell lysate. This band is partially quenched by the addition of **ab20431**. No band is observed in human heart lysate.



Western blot - Anti-Syntenin antibody (ab19903)

All lanes : Anti-Syntenin antibody (ab19903) at 1 µg/ml

Lane 1 : Mouse heart lysate

Lane 2 : Rat heart lysate

Lane 3 : Mouse heart lysate with Mouse Syntenin peptide (**ab20431**) at 1 µg/ml

Lane 4 : Rat heart lysate with Mouse Syntenin peptide (**ab20431**) at 1 µg/ml

Lysates/proteins at 20 µg per lane.

Secondary

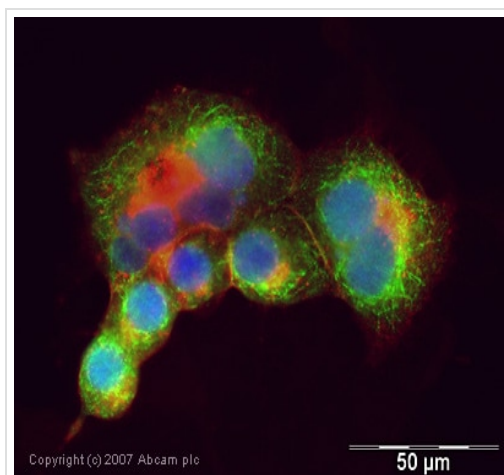
All lanes : Goat Anti-Rabbit IgG H&L (HRP) (**ab6721**) at 1/50000 dilution

Predicted band size: 32 kDa

Observed band size: 32 kDa

Additional bands at: 50 kDa. We are unsure as to the identity of these extra bands.

ab19903 detects a band of the expected size (32kDa) in both mouse and rat heart lysate. This band is quenched completely by the addition of the immunizing peptide in the mouse lysate and is partially quenched by the addition of **ab20431** in the rat heart lysate.



Immunocytochemistry/ Immunofluorescence - Anti-Syntenin antibody (ab19903)

ICC/IF image of ab19903 stained human HEK 293 cells. The cells were PFA fixed (10 min), permeabilised in TBS-T (20 min) and incubated with the antibody (ab19903, 1µg/ml) for 1h at room temperature. 1%BSA / 10% normal goat serum / 0.3M glycine was used to quench autofluorescence and block non-specific protein-protein interactions. The secondary antibody (green) was Alexa Fluor® 488 goat anti-rabbit IgG (H+L) used at a 1/1000 dilution for 1h. Alexa Fluor® 594 WGA was used to label plasma membranes (red). DAPI was used to stain the cell nuclei (blue).

Please note: All products are "FOR RESEARCH USE ONLY. NOT FOR USE IN DIAGNOSTIC PROCEDURES"

Our Abpromise to you: Quality guaranteed and expert technical support

- Replacement or refund for products not performing as stated on the datasheet
- Valid for 12 months from date of delivery
- Response to your inquiry within 24 hours

- We provide support in Chinese, English, French, German, Japanese and Spanish
- Extensive multi-media technical resources to help you
- We investigate all quality concerns to ensure our products perform to the highest standards

If the product does not perform as described on this datasheet, we will offer a refund or replacement. For full details of the Abpromise, please visit <https://www.abcam.cn/abpromise> or contact our technical team.

Terms and conditions

- Guarantee only valid for products bought direct from Abcam or one of our authorized distributors