

Anti-Syntaxin 6 antibody [3D10] - Golgi Membrane Marker ab12370

★★★★★ [3 Abreviews](#) [25 References](#) [4 图像](#)

概述

产品名称	Anti-Syntaxin 6抗体[3D10] - Golgi膜Marker
描述	小鼠单克隆抗体[3D10] to Syntaxin 6 - Golgi膜Marker
宿主	Mouse
经测试应用	适用于: Flow Cyt, WB, IP
种属反应性	与反应: Mouse, Rat
免疫原	Recombinant full length protein corresponding to Rat Syntaxin 6. Database link: Q63635
表位	The epitope for this antibody has been localized to the amino terminus (residues 1-25) of Syntaxin 6.
阳性对照	Mouse Brain Tissue Extract, rat Brain Tissue Extract.
常规说明	<p>This product was changed from ascites to tissue culture supernatant on 5th July 2019. Lot numbers higher than GR3173630 are from tissue culture supernatant. Please note that the dilutions may need to be adjusted accordingly. If you have any questions, please do not hesitate to contact our scientific support team.</p> <p>The Life Science industry has been in the grips of a reproducibility crisis for a number of years. Abcam is leading the way in addressing this with our range of recombinant monoclonal antibodies and knockout edited cell lines for gold-standard validation. Please check that this product meets your needs before purchasing.</p> <p>If you have any questions, special requirements or concerns, please send us an inquiry and/or contact our Support team ahead of purchase. Recommended alternatives for this product can be found below, along with publications, customer reviews and Q&As</p>

性能

形式	Liquid
存放说明	Shipped at 4°C. Upon delivery aliquot and store at -20°C. Avoid freeze / thaw cycles.
存储溶液	Preservative: 0.09% Sodium azide Constituents: PBS, 50% Glycerol (glycerin, glycerine)
纯度	Protein G purified

纯化说明	Purified from TCS
克隆	单克隆
克隆编号	3D10
同种型	IgG1
轻链类型	kappa

应用

The Abpromise guarantee **Abpromise™**承诺保证使用ab12370于以下的经测试应用

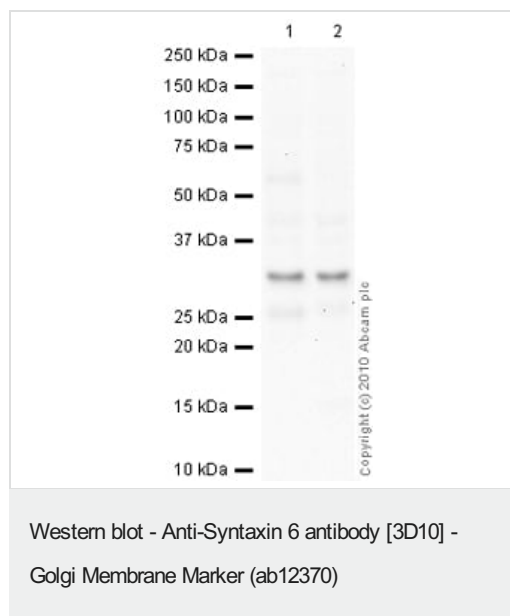
“应用说明”部分 下显示的仅为推荐的起始稀释度;实际最佳的稀释度/浓度应由使用者检定。

应用	Ab评论	说明
Flow Cyt		Use 2µg for 10 ⁶ cells. ab170190 - Mouse monoclonal IgG1, is suitable for use as an isotype control with this antibody.
WB	★★★★★ (2)	1/1000. Detects a band of approximately 35 kDa (predicted molecular weight: 30.6 kDa).
IP		Use at an assay dependent concentration.

靶标

功能	Involved in intracellular vesicle trafficking.
序列相似性	Belongs to the syntaxin family. Contains 1 t-SNARE coiled-coil homology domain.
翻译后修饰	Phosphorylated upon DNA damage, probably by ATM or ATR.
细胞定位	Golgi apparatus membrane.

图片



All lanes : Anti-Syntaxin 6 antibody [3D10] - Golgi Membrane Marker (ab12370) at 1 µg/ml

Lane 1 : Brain (Mouse) Tissue Lysate

Lane 2 : Brain (Rat) Tissue Lysate

Lysates/proteins at 10 µg per lane.

Secondary

All lanes : Goat Anti-Mouse IgG H&L (HRP) preadsorbed ([ab97040](#)) at 1/5000 dilution

Developed using the ECL technique.

Performed under reducing conditions.

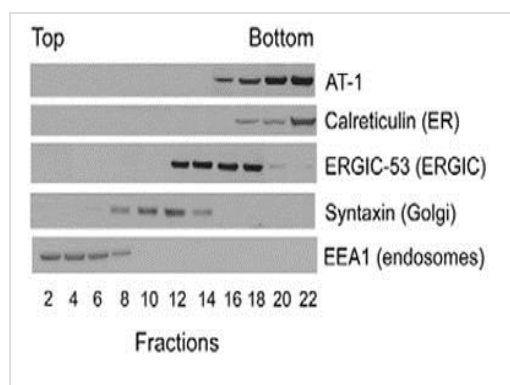
Predicted band size: 30.6 kDa

Observed band size: 30.6 kDa

Additional bands at: 26 kDa. We are unsure as to the identity of these extra bands.

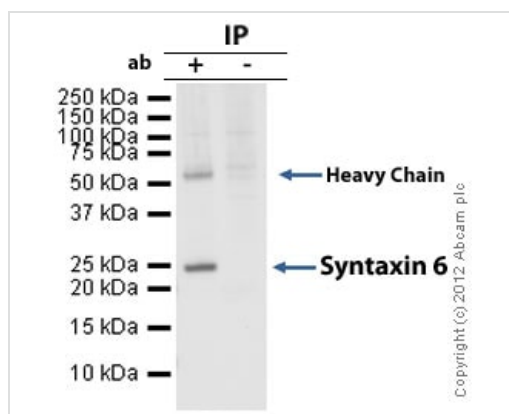
Exposure time: 8 minutes

This image was generated using the ascites version of the product.



Intracellular membranes from CHO cells were separated on a 10–24% discontinuous Nycodenz gradient. Western Blotting was then performed using a range of antibodies including ab12370 at a 1/1000 dilution. An HRP-conjugated anti-mouse secondary was used at a 1/6000 dilution.

This image was generated using the ascites version of the product.



Immunoprecipitation - Anti-Syntaxin 6 antibody
[3D10] - Golgi Membrane Marker (ab12370)

Syntaxin 6 was immunoprecipitated using 0.5mg Mouse Brain whole tissue lysate, 10µg of Mouse monoclonal to Syntaxin 6 and 50µl of protein G magnetic beads (+). No antibody was added to the control (-).

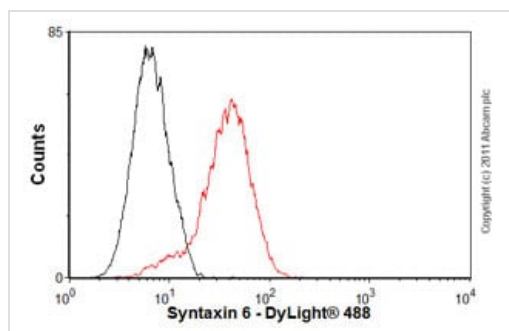
The antibody was incubated under agitation with Protein G beads for 10min, Mouse Brain whole tissue lysate lysate diluted in RIPA buffer was added to each sample and incubated for a further 10min under agitation.

Proteins were eluted by addition of 40µl SDS loading buffer and incubated for 10min at 70°C; 10µl of each sample was separated on a SDS PAGE gel, transferred to a nitrocellulose membrane, blocked with 5% BSA and probed with ab12370.

Secondary: Protein G-HRP at 1/500 dilution.

Band: 25kDa:Syntaxin 6.

This image was generated using the ascites version of the product.



Flow Cytometry - Anti-Syntaxin 6 antibody [3D10] -
Golgi Membrane Marker (ab12370)

Overlay histogram showing PC12 cells stained with ab12370 (red line). The cells were fixed with 4% paraformaldehyde (10 min) and then permeabilized with 0.1% PBS-Tween for 20 min. The cells were then incubated in 1x PBS / 10% normal goat serum / 0.3M glycine to block non-specific protein-protein interactions followed by the antibody (ab12370, 2µg/1x10⁶ cells) for 30 min at 22°C. The secondary antibody used was DyLight® 488 goat anti-mouse IgG (H+L) ([ab96879](#)) at 1/500 dilution for 30 min at 22°C. Isotype control antibody (black line) was mouse IgG1 [ICIGG1]([ab91353](#), 2µg/1x10⁶ cells) used under the same conditions. Acquisition of >5,000 events was performed.

This image was generated using the ascites version of the product.

Please note: All products are "FOR RESEARCH USE ONLY. NOT FOR USE IN DIAGNOSTIC PROCEDURES"

Our Abpromise to you: Quality guaranteed and expert technical support

- Replacement or refund for products not performing as stated on the datasheet
- Valid for 12 months from date of delivery
- Response to your inquiry within 24 hours
- We provide support in Chinese, English, French, German, Japanese and Spanish
- Extensive multi-media technical resources to help you

- We investigate all quality concerns to ensure our products perform to the highest standards

If the product does not perform as described on this datasheet, we will offer a refund or replacement. For full details of the Abpromise, please visit <https://www.abcam.cn/abpromise> or contact our technical team.

Terms and conditions

- Guarantee only valid for products bought direct from Abcam or one of our authorized distributors