

Anti-Synaptotagmin antibody [ASV30] ab13259

★★★★★ [1 Abreviews](#) [22 References](#) [3 图像](#)

概述

产品名称	Anti-Synaptotagmin抗体[ASV30]
描述	小鼠单克隆抗体[ASV30] to Synaptotagmin
宿主	Mouse
经测试应用	适用于: WB, ICC/IF, IP
种属反应性	与反应: Mouse, Rat
免疫原	Full length protein corresponding to Rat Synaptotagmin. Rat brain synaptic junction protein complexes Database link: P21707
阳性对照	Mouse or Rat brain tissue extract.
常规说明	<p>This product was changed from ascites to tissue culture supernatant on 5th July 2019. Lot numbers higher than GR3258922 are from tissue culture supernatant. Please note that the dilutions may need to be adjusted accordingly. If you have any questions, please do not hesitate to contact our scientific support team.</p> <p>The Life Science industry has been in the grips of a reproducibility crisis for a number of years. Abcam is leading the way in addressing this with our range of recombinant monoclonal antibodies and knockout edited cell lines for gold-standard validation. Please check that this product meets your needs before purchasing.</p> <p>If you have any questions, special requirements or concerns, please send us an inquiry and/or contact our Support team ahead of purchase. Recommended alternatives for this product can be found below, along with publications, customer reviews and Q&As</p>

性能

形式	Liquid
存放说明	Shipped at 4°C. Upon delivery aliquot and store at -20°C. Avoid freeze / thaw cycles.
存储溶液	Preservative: 0.09% Sodium azide Constituents: PBS, 50% Glycerol (glycerin, glycerine)
纯度	Protein G purified
纯化说明	Purified from TCS.
克隆	单克隆

克隆编号 ASV30

同种型 IgG2a

应用

The Abpromise guarantee **Abpromise™**承诺保证使用ab13259于以下的经测试应用

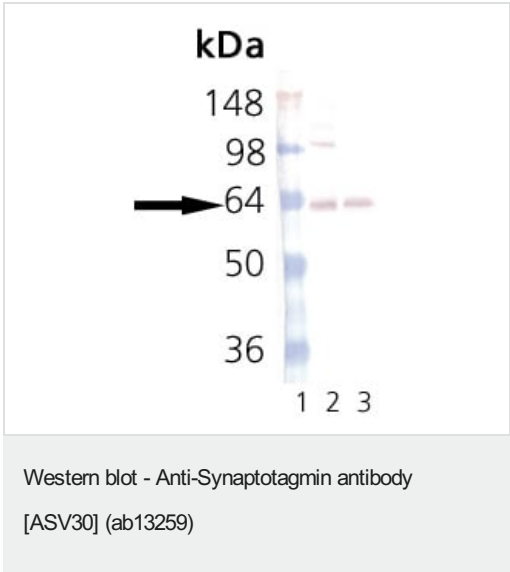
“应用说明”部分 下显示的仅为推荐的起始稀释度;实际最佳的稀释度/浓度应由使用者检定。

应用	Ab评论	说明
WB	★★★★★ (1)	1/1000.
ICC/IF		Use a concentration of 5 µg/ml.
IP		Use a concentration of 5 µg/ml.

靶标

功能	May have a regulatory role in the membrane interactions during trafficking of synaptic vesicles at the active zone of the synapse. It binds acidic phospholipids with a specificity that requires the presence of both an acidic head group and a diacyl backbone.
序列相似性	Belongs to the synaptotagmin family. Contains 2 C2 domains.
结构域	The first C2 domain mediates Ca(2+)-dependent phospholipid binding. The second C2 domain mediates interaction with Stonin 2.
细胞定位	Cytoplasmic vesicle, secretory vesicle, synaptic vesicle membrane. Cytoplasmic vesicle, secretory vesicle, chromaffin granule membrane. Synaptic vesicles and chromaffin granules.

图片



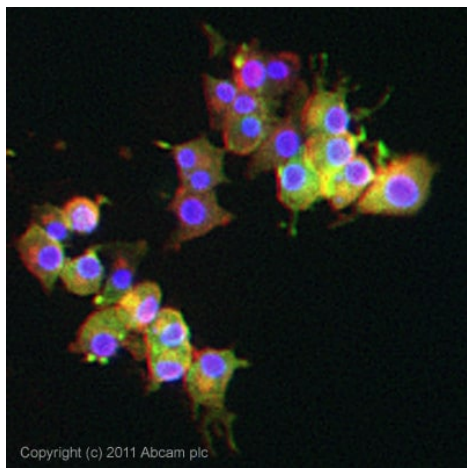
All lanes : Anti-Synaptotagmin antibody [ASV30] (ab13259) at 1/1000 dilution

Lane 1 : Molecular weight ladder

Lane 2 : Lysates prepared from mouse brain

Lane 3 : Lysates prepared from rat brain

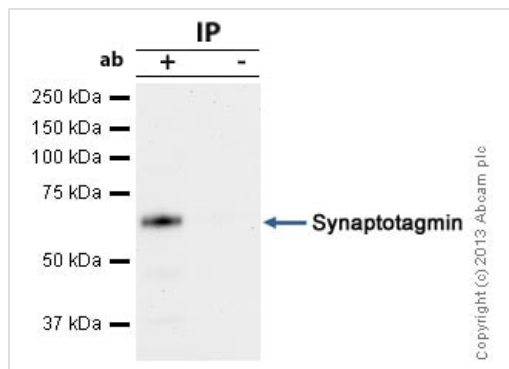
This image was generated using the ascites version of the product.



Immunocytochemistry/ Immunofluorescence - Anti-Synaptotagmin antibody [ASV30] (ab13259)

ICC/IF image of ab13259 stained PC12 cells. The cells were 4% formaldehyde fixed (10 min) and then incubated in 1%BSA / 10% normal goat serum / 0.3M glycine in 0.1% PBS-Tween for 1h to permeabilise the cells and block non-specific protein-protein interactions. The cells were then incubated with the antibody (ab13259, 5µg/ml) overnight at +4°C. The secondary antibody (green) was Alexa Fluor® 488 goat anti-mouse IgG (H+L) used at a 1/1000 dilution for 1h. Alexa Fluor® 594 WGA was used to label plasma membranes (red) at a 1/200 dilution for 1h. DAPI was used to stain the cell nuclei (blue) at a concentration of 1.43µM.

This image was generated using the ascites version of the product.



Immunoprecipitation - Anti-Synaptotagmin antibody [ASV30] (ab13259)

Synaptotagmin was immunoprecipitated using 0.5mg Mouse Brain tissue lysate, 5µg of Mouse monoclonal to Synaptotagmin and 50µl of protein G magnetic beads (+). No antibody was added to the control (-).

The antibody was incubated under agitation with Protein G beads for 10min, Mouse Brain tissue lysate diluted in RIPA buffer was added to each sample and incubated for a further 10min under agitation.

Proteins were eluted by addition of 40µl SDS loading buffer and incubated for 10min at 70°C; 10µl of each sample was separated on a SDS PAGE gel, transferred to a nitrocellulose membrane, blocked with 5% BSA and probed with ab13259.

Secondary: Goat polyclonal to mouse IgG light chain specific (HRP) at 1/20,000 dilution.

Band: 64kDa; Synaptotagmin

This image was generated using the ascites version of the product.

Please note: All products are "FOR RESEARCH USE ONLY. NOT FOR USE IN DIAGNOSTIC PROCEDURES"

Our Abpromise to you: Quality guaranteed and expert technical support

- Replacement or refund for products not performing as stated on the datasheet
- Valid for 12 months from date of delivery
- Response to your inquiry within 24 hours
- We provide support in Chinese, English, French, German, Japanese and Spanish
- Extensive multi-media technical resources to help you
- We investigate all quality concerns to ensure our products perform to the highest standards

If the product does not perform as described on this datasheet, we will offer a refund or replacement. For full details of the Abpromise, please visit <https://www.abcam.cn/abpromise> or contact our technical team.

Terms and conditions

- Guarantee only valid for products bought direct from Abcam or one of our authorized distributors