


Anti-Synaptotagmin antibody ab51164

[1 References](#) [2 图像](#)

概述

产品名称	Anti-Synaptotagmin抗体
描述	兔多克隆抗体to Synaptotagmin
宿主	Rabbit
经测试应用	适用于: WB, IHC-P, ELISA
种属反应性	与反应: Human 预测可用于: Mouse 
免疫原	Synthesized non-phosphopeptide derived from human Synaptotagmin around the phosphorylation site of serine 309.
阳性对照	293 cell extract treated with PMA (125ng/ml, 30min) and human breast carcinoma tissue.
常规说明	<p>The Life Science industry has been in the grips of a reproducibility crisis for a number of years. Abcam is leading the way in addressing this with our range of recombinant monoclonal antibodies and knockout edited cell lines for gold-standard validation. Please check that this product meets your needs before purchasing.</p> <p>If you have any questions, special requirements or concerns, please send us an inquiry and/or contact our Support team ahead of purchase. Recommended alternatives for this product can be found below, along with publications, customer reviews and Q&As</p>

性能

形式	Liquid
存放说明	Shipped at 4°C. Store at -20°C. Stable for 12 months at -20°C.
存储溶液	<p>pH: 7.40</p> <p>Preservative: 0.02% Sodium azide</p> <p>Constituents: 50% Glycerol (glycerin, glycerine), 0.87% Sodium chloride, PBS</p>
纯度	Without Mg+2 and Ca+2
克隆	Immunogen affinity purified
同种型	多克隆
	IgG

应用

The Abpromise guarantee **Abpromise™**承诺保证使用ab51164于以下的经测试应用

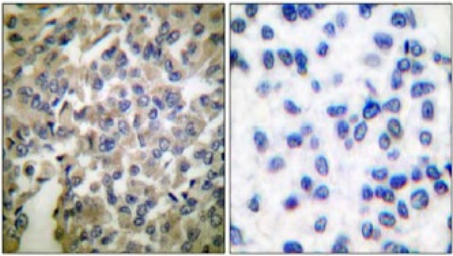
“应用说明”部分 下显示的仅为推荐的起始稀释度;实际最佳的稀释度/浓度应由使用者检定。

应用	Ab评论	说明
WB		1/500 - 1/1000. Detects a band of approximately 45 kDa (predicted molecular weight: 48 kDa).
IHC-P		Use at an assay dependent concentration.
ELISA		1/20000.

靶标

功能	May have a regulatory role in the membrane interactions during trafficking of synaptic vesicles at the active zone of the synapse. It binds acidic phospholipids with a specificity that requires the presence of both an acidic head group and a diacyl backbone.
序列相似性	Belongs to the synaptotagmin family. Contains 2 C2 domains.
结构域	The first C2 domain mediates Ca(2+)-dependent phospholipid binding. The second C2 domain mediates interaction with Stonin 2.
细胞定位	Cytoplasmic vesicle, secretory vesicle, synaptic vesicle membrane. Cytoplasmic vesicle, secretory vesicle, chromaffin granule membrane. Synaptic vesicles and chromaffin granules.

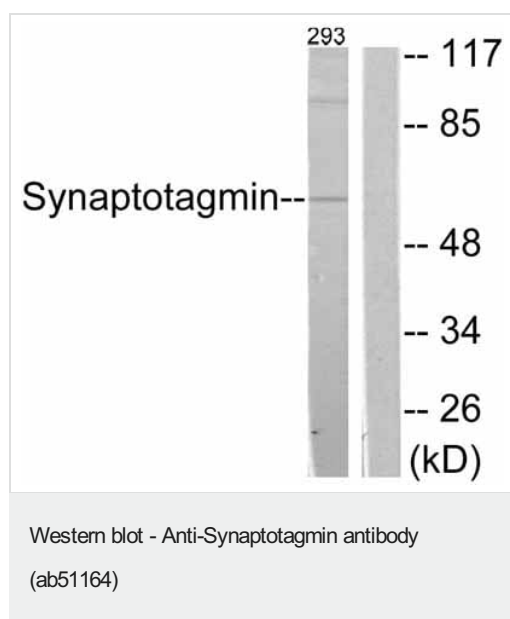
图片



Peptide - +

Immunohistochemistry (Formalin/PFA-fixed paraffin-embedded sections) - Anti-Synaptotagmin antibody (ab51164)

Immunohistochemical analysis of human breast carcinoma tissue (paraffin section) using ab51164 (1/50 dilution); with and without peptide.



All lanes : Anti-Synaptotagmin antibody (ab51164) at 1/500 dilution

Lane 1 : 293 cell extract treated with PMA (125ng/ml, 30min); without peptide

Lane 2 : 293 cell extract treated with PMA (125ng/ml, 30min); with peptide

Predicted band size: 48 kDa

Observed band size: 45 kDa

Please note: All products are "FOR RESEARCH USE ONLY. NOT FOR USE IN DIAGNOSTIC PROCEDURES"

Our Abpromise to you: Quality guaranteed and expert technical support

- Replacement or refund for products not performing as stated on the datasheet
- Valid for 12 months from date of delivery
- Response to your inquiry within 24 hours
- We provide support in Chinese, English, French, German, Japanese and Spanish
- Extensive multi-media technical resources to help you
- We investigate all quality concerns to ensure our products perform to the highest standards

If the product does not perform as described on this datasheet, we will offer a refund or replacement. For full details of the Abpromise, please visit <https://www.abcam.cn/abpromise> or contact our technical team.

Terms and conditions

- Guarantee only valid for products bought direct from Abcam or one of our authorized distributors