

# Anti-Synaptophysin antibody [EP1098Y] - BSA and Azide free ab214621

敲除验证 重组 RabMAb

★★★★☆ 1 Abreviews 4 图像

### 概述

产品名称	Anti-Synaptophysin抗体[EP1098Y] - BSA and Azide free
描述	兔单克隆抗体[EP1098Y] to Synaptophysin - BSA and Azide free
宿主	Rabbit
经测试应用	适用于: WB, ICC/IF, Flow Cyt (Intra) 不适用于: IHC-P
种属反应性	与反应: Mouse, Rat, Human
免疫原	Synthetic peptide. This information is proprietary to Abcam and/or its suppliers.
阳性对照	IHC-P: Human medullablastoma. ICC/IF: PC12 cells. Flow Cyt (intra): PC12 cells. WB: Human, mouse and rat brain tissue lysates. HEK-293T cell lysate.
常规说明	<p>ab214621 is the carrier-free version of <a href="#">ab52636</a>.</p> <p>Our <b>carrier-free</b> antibodies are typically supplied in a PBS-only formulation, purified and free of BSA, sodium azide and glycerol. The carrier-free buffer and high concentration allow for increased conjugation efficiency.</p> <p>This conjugation-ready format is designed for use with fluorochromes, metal isotopes, oligonucleotides, and enzymes, which makes them ideal for antibody labelling, functional and cell-based assays, flow-based assays (e.g. mass cytometry) and Multiplex Imaging applications.</p> <p>Use our <b>conjugation kits</b> for antibody conjugates that are ready-to-use in as little as 20 minutes with &lt;1 minute hands-on-time and 100% antibody recovery: available for fluorescent dyes, HRP, biotin and gold.</p> <p>This product is compatible with the Maxpar<sup>®</sup> Antibody Labeling Kit from Fluidigm, without the need for antibody preparation. Maxpar<sup>®</sup> is a trademark of Fluidigm Canada Inc.</p> <p>This product is a recombinant monoclonal antibody, which offers several advantages including:</p> <ul style="list-style-type: none"><li>- High batch-to-batch consistency and reproducibility</li><li>- Improved sensitivity and specificity</li><li>- Long-term security of supply</li><li>- Animal-free production</li></ul> <p>For more information <a href="#">see here</a>.</p> <p>Our RabMAb<sup>®</sup> technology is a patented hybridoma-based technology for making rabbit</p>

monoclonal antibodies. For details on our patents, please refer to [RabMAB® patents](#).

## 性能

形式	Liquid
存放说明	Shipped at 4°C. Store at +4°C. Do Not Freeze.
存储溶液	pH: 7.20 Constituent: PBS
无载体	是
纯度	Protein A purified
克隆	单克隆
克隆编号	EP1098Y
同种型	IgG

## 应用

**The Abpromise guarantee**      **Abpromise™**承诺保证使用ab214621于以下的经测试应用

“应用说明”部分 下显示的仅为推荐的起始稀释度;实际最佳的稀释度/浓度应由使用者检定。

应用	Ab评论	说明
WB		Use at an assay dependent concentration. Detects a band of approximately 38 kDa (predicted molecular weight: 34 kDa).
ICC/IF	★★★★★ (1)	Use at an assay dependent concentration.
Flow Cyt (Intra)		Use at an assay dependent concentration. <b>ab199376</b> - Rabbit monoclonal IgG, is suitable for use as an isotype control with this antibody.

应用说明      Is unsuitable for IHC-P.

## 靶标

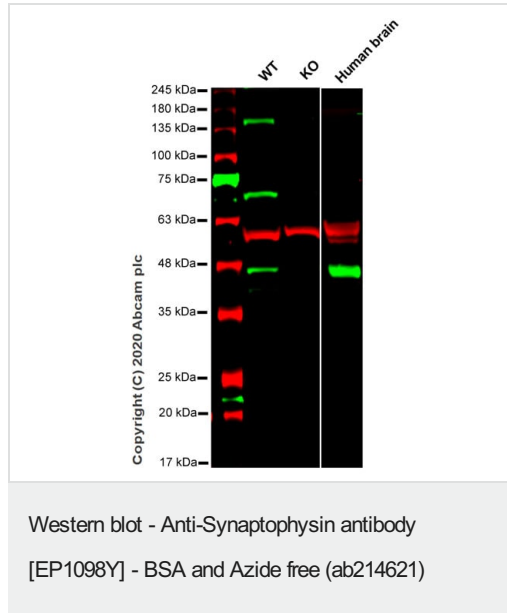
功能	Possibly involved in structural functions as organizing other membrane components or in targeting the vesicles to the plasma membrane. Involved in the regulation of short-term and long-term synaptic plasticity.
组织特异性	Characteristic of a type of small (30-80 nm) neurosecretory vesicles, including presynaptic vesicles, but also vesicles of various neuroendocrine cells of both neuronal and epithelial phenotype.
疾病相关	Mental retardation, X-linked, SYP-related
序列相似性	Belongs to the synaptophysin/synaptobrevin family. Contains 1 MARVEL domain.
结构域	The calcium-binding activity is thought to be localized in the cytoplasmic tail of the protein.
翻译后修饰	Ubiquitinated; mediated by SIAH1 or SIAH2 and leading to its subsequent proteasomal

degradation.

## 细胞定位

Cytoplasmic vesicle, secretory vesicle, synaptic vesicle membrane. Cell junction, synapse, synaptosome.

## 图片



**All lanes** : Anti-Synaptophysin antibody [EP1098Y] ([ab52636](#)) at 1/1000 dilution

**Lane 1** : Wild-type HEK-293T cell lysate at 20  $\mu$ g

**Lane 2** : SYP knockout HEK-293T cell lysate at 20  $\mu$ g

**Lane 3** : Human brain tissue lysate

Performed under reducing conditions.

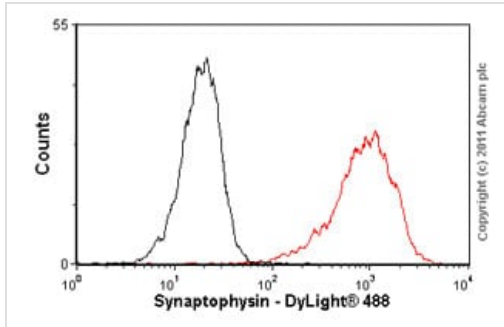
**Predicted band size:** 34 kDa

**Observed band size:** 38 kDa

This data was developed using the same antibody clone in a different buffer formulation ([ab52636](#)).

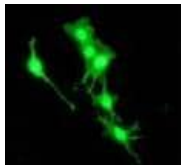
**Lanes 1-3:** Merged signal (red and green). Green - [ab52636](#) observed at 38 kDa. Red - loading control, [ab7291](#) observed at 50 kDa.

[ab52636](#) Anti-Synaptophysin antibody [EP1098Y] was shown to specifically react with Synaptophysin in wild-type HEK293T cells. Loss of signal was observed when knockout cell line [ab267272](#) (knockout cell lysate [ab257060](#)) was used. Wild-type and Synaptophysin knockout samples were subjected to SDS-PAGE. [ab52636](#) and Anti-alpha Tubulin antibody [DM1A] - Loading Control ([ab7291](#)) were incubated overnight at 4°C at 1 in 1000 dilution and 1 in 20000 dilution respectively. Blots were developed with Goat anti- Rabbit IgG H&L (IRDye® 800CW) preadsorbed ([ab216773](#)) and Goat anti- Mouse IgG H&L (IRDye® 680RD) preadsorbed ([ab216776](#)) secondary antibodies at 1 in 10000 dilution for 1 hour at room temperature before imaging.



Flow Cytometry (Intracellular) - Anti-Synaptophysin antibody [EP1098Y] - BSA and Azide free (ab214621)

Overlay histogram showing PC12 cells stained with **ab52636** (red line). The cells were fixed with methanol (5 min) and incubated in 1x PBS / 10% normal goat serum / 0.3M glycine to block non-specific protein-protein interactions. The cells were then incubated with the antibody (**ab52636**, 1/100 dilution) for 30 min at 22°C. The secondary antibody used was DyLight® 488 goat anti-rabbit IgG (H+L) (**ab96899**) at 1/500 dilution for 30 min at 22°C. Isotype control antibody (black line) was rabbit monoclonal IgG (0.5µg/1x10<sup>6</sup> cells) used under the same conditions. Acquisition of >5,000 events was performed. This antibody gave a slightly decreased signal in PC12 cells fixed with 4% paraformaldehyde (10 min) used under the same conditions. Please note that Abcam do not have data for use of this antibody on non-fixed cells. We welcome any customer feedback. This data was developed using the same antibody clone in a different buffer formulation containing PBS, BSA, glycerol, and sodium azide (**ab52636**).



Immunocytochemistry/ Immunofluorescence - Anti-Synaptophysin antibody [EP1098Y] - BSA and Azide free (ab214621)

This ICC data was generated using the same anti-Synaptophysin antibody clone, EP1098Y, in a different buffer formulation (cat# **ab52636**).

PC12 cells labelled with **ab52636** at 1/250 - 1/500 dilution

### Why choose a recombinant antibody?



**Research with confidence**  
Consistent and reproducible results



**Long-term and scalable supply**  
Recombinant technology



**Success from the first experiment**  
Confirmed specificity



**Ethical standards compliant**  
Animal-free production

Anti-Synaptophysin antibody [EP1098Y] - BSA and Azide free (ab214621)

**Please note:** All products are "FOR RESEARCH USE ONLY. NOT FOR USE IN DIAGNOSTIC PROCEDURES"

### Our Abpromise to you: Quality guaranteed and expert technical support

---

- Replacement or refund for products not performing as stated on the datasheet
- Valid for 12 months from date of delivery
- Response to your inquiry within 24 hours
- We provide support in Chinese, English, French, German, Japanese and Spanish
- Extensive multi-media technical resources to help you
- We investigate all quality concerns to ensure our products perform to the highest standards

If the product does not perform as described on this datasheet, we will offer a refund or replacement. For full details of the Abpromise, please visit <https://www.abcam.cn/abpromise> or contact our technical team.

### Terms and conditions

---

- Guarantee only valid for products bought direct from Abcam or one of our authorized distributors