



### Anti-Synaptophysin antibody ab14692

★★★★★ [9 Abreviews](#) [102 References](#) [3 图像](#)

#### 概述

产品名称	Anti-Synaptophysin抗体
描述	兔多克隆抗体to Synaptophysin
宿主	Rabbit
特异性	The antibody does not cross-react other synaptic vesicle proteins such as synaptotagmin, GAP45, and SNAP25 protiens.
经测试应用	<b>适用于:</b> WB, IHC-P
种属反应性	<b>与反应:</b> Mouse, Rat
免疫原	Synthetic peptide corresponding to Human Synaptophysin aa 41-62. Sequence: FATCGSYSGELQLSVDCAKTE <div>  <a href="#">Run BLAST with</a>  <a href="#">Run BLAST with</a> </div>
阳性对照	IHC: Rat and mouse brain. WB: Mouse forebrain extract.
常规说明	<p>The Life Science industry has been in the grips of a reproducibility crisis for a number of years. Abcam is leading the way in addressing this with our range of recombinant monoclonal antibodies and knockout edited cell lines for gold-standard validation. Please check that this product meets your needs before purchasing.</p> <p>If you have any questions, special requirements or concerns, please send us an inquiry and/or contact our Support team ahead of purchase. Recommended alternatives for this product can be found below, along with publications, customer reviews and Q&amp;As</p>

#### 性能

形式	Liquid
存放说明	Shipped at 4°C. Store at +4°C short term (1-2 weeks). Upon delivery aliquot. Store at -20°C. Avoid freeze / thaw cycle.
存储溶液	Preservative: 0.02% Sodium azide  The buffer includes stabilizing proteins and glycerol.
纯度	Immunogen affinity purified
克隆	多克隆

同种型

IgG

应用

The Abpromise guarantee

Abpromise™承诺保证使用ab14692于以下的经测试应用

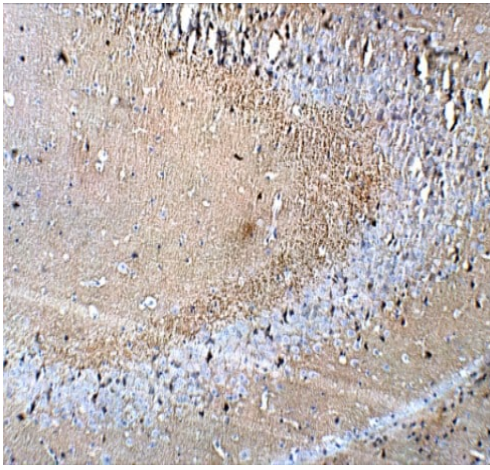
“应用说明”部分 下显示的仅为推荐的起始稀释度;实际最佳的稀释度/浓度应由使用者检定。

应用	Ab评论	说明
WB		1/200 - 1/1000. Detects a band of approximately 42 kDa (predicted molecular weight: 38 kDa).
IHC-P	★★★★★ (2)	1/100.

靶标

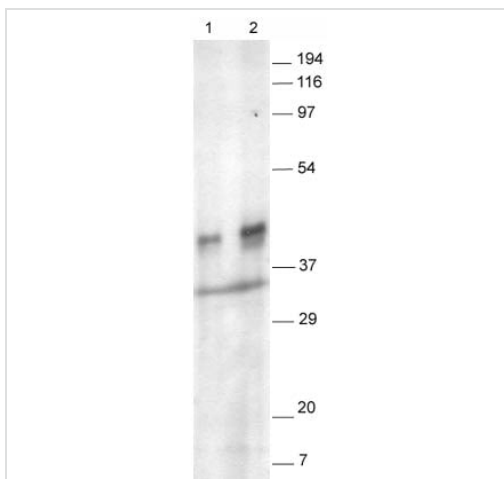
功能	Possibly involved in structural functions as organizing other membrane components or in targeting the vesicles to the plasma membrane. Involved in the regulation of short-term and long-term synaptic plasticity.
组织特异性	Characteristic of a type of small (30-80 nm) neurosecretory vesicles, including presynaptic vesicles, but also vesicles of various neuroendocrine cells of both neuronal and epithelial phenotype.
疾病相关	Mental retardation, X-linked, SYP-related
序列相似性	Belongs to the synaptophysin/synaptobrevin family. Contains 1 MARVEL domain.
结构域	The calcium-binding activity is thought to be localized in the cytoplasmic tail of the protein.
翻译后修饰	Ubiquitinated; mediated by SIAH1 or SIAH2 and leading to its subsequent proteasomal degradation.
细胞定位	Cytoplasmic vesicle, secretory vesicle, synaptic vesicle membrane. Cell junction, synapse, synaptosome.

图片



Immunohistochemistry (Formalin/PFA-fixed paraffin-embedded sections) - Anti-Synaptophysin antibody (ab14692)

Immunohistochemical analysis of formaldehyde-fixed, paraffin-embedded mouse brain sections labelling Synaptophysin with ab14692 at a dilution of 1/100 in IHC blocking Buffer. DAB (brown\_ staining and Hematoxylin QS (blue) counterstain was used. 20x magnification of Leica DM4000.



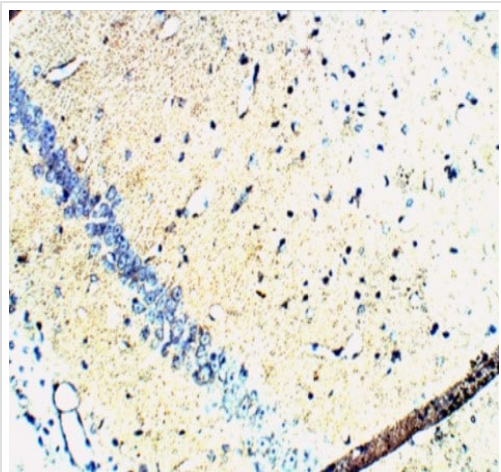
Western blot - Anti-Synaptophysin antibody (ab14692)

This image is courtesy of Chris Anderson, Wellcome Trust Sanger Institute, United Kingdom

Synaptophysin antibody (ab14692) western blot on mouse forebrain extract (10µg protein/lane). The blot was exposed for 10 minutes to autoradiographic film. Ladder markers from 7-194 kDa.

Lane 1 = 1/500 ab14692

Lane 2 = 1/200 ab14692



Immunohistochemical analysis of formaldehyde-fixed, paraffin-embedded rat brain sections labelling Synaptophysin with ab14692 at a dilution of 1/100 in IHC blocking Buffer. DAB (brown\_ staining and Hematoxylin QS (blue) counterstain was used. 20x magnification of Leica DM4000.

Immunohistochemistry (Formalin/PFA-fixed paraffin-embedded sections) - Anti-Synaptophysin antibody (ab14692)

**Please note:** All products are "FOR RESEARCH USE ONLY. NOT FOR USE IN DIAGNOSTIC PROCEDURES"

### Our Abpromise to you: Quality guaranteed and expert technical support

---

- Replacement or refund for products not performing as stated on the datasheet
- Valid for 12 months from date of delivery
- Response to your inquiry within 24 hours
- We provide support in Chinese, English, French, German, Japanese and Spanish
- Extensive multi-media technical resources to help you
- We investigate all quality concerns to ensure our products perform to the highest standards

If the product does not perform as described on this datasheet, we will offer a refund or replacement. For full details of the Abpromise, please visit <https://www.abcam.cn/abpromise> or contact our technical team.

### Terms and conditions

---

- Guarantee only valid for products bought direct from Abcam or one of our authorized distributors