

Anti-Synapsin I antibody - Synaptic Marker ab64581

★★★★★ [23 Abreviews](#) [97 References](#) [3 图像](#)

概述

产品名称	Anti-Synapsin I抗体- Synaptic Marker
描述	兔多克隆抗体to Synapsin I - Synaptic Marker
宿主	Rabbit
特异性	Replenishment batches of our polyclonal antibody, ab64581 are tested in WB. Previous batches were additionally validated in IP. This application is still expected to work and is covered by our Abpromise guarantee. You may also be interested in our alternative recombinant antibody, ab254349 .
经测试应用	适用于: WB, IP
种属反应性	与反应: Mouse, Rat, Goat 预测可用于: Sheep, Human 
免疫原	Synthetic peptide. This information is proprietary to Abcam and/or its suppliers.
常规说明	<p>The Life Science industry has been in the grips of a reproducibility crisis for a number of years. Abcam is leading the way in addressing this with our range of recombinant monoclonal antibodies and knockout edited cell lines for gold-standard validation. Please check that this product meets your needs before purchasing.</p> <p>If you have any questions, special requirements or concerns, please send us an inquiry and/or contact our Support team ahead of purchase. Recommended alternatives for this product can be found below, along with publications, customer reviews and Q&As</p>

性能

形式	Liquid
存放说明	Shipped at 4°C. Store at +4°C short term (1-2 weeks). Upon delivery aliquot. Store at -20°C or -80°C. Avoid freeze / thaw cycle.
存储溶液	pH: 7.40 Preservative: 0.02% Sodium azide Constituent: PBS

Batches of this product that have a concentration < 1mg/ml may have BSA added as a stabilising agent. If you would like information about the formulation of a specific lot, please contact our scientific support team who will be happy to help.

纯度	Immunogen affinity purified
克隆	多克隆
同种型	IgG

应用

The Abpromise guarantee **Abpromise™**承诺保证使用ab64581于以下的经测试应用

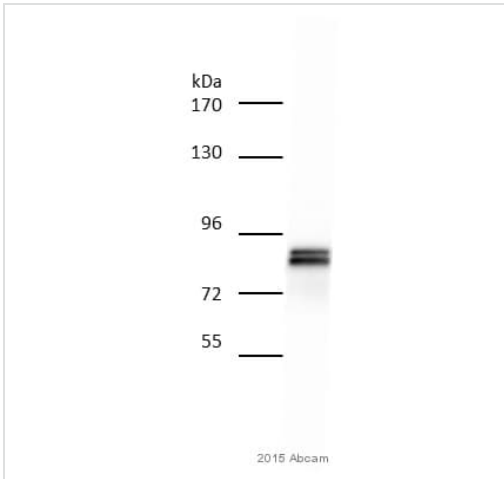
“应用说明”部分下显示的仅为推荐的起始稀释度;实际最佳的稀释度/浓度应由使用者检定。

应用	Ab评论	说明
WB	★★★★★ (3)	Use a concentration of 1 µg/ml. Detects a band of approximately 74, 70 kDa (predicted molecular weight: 74 kDa). Abcam recommends using 3-5% milk as the blocking agent.
IP		Use at an assay dependent concentration.

靶标

功能	Neuronal phosphoprotein that coats synaptic vesicles, binds to the cytoskeleton, and is believed to function in the regulation of neurotransmitter release. The complex formed with NOS1 and CAPON proteins is necessary for specific nitric-oxid functions at a presynaptic level.
疾病相关	Defects in SYN1 are a cause of epilepsy X-linked with variable learning disabilities and behavior disorders [MIM:300491]. XELBD is characterized by variable combinations of epilepsy, learning difficulties, macrocephaly, and aggressive behavior.
序列相似性	Belongs to the synapsin family.
翻译后修饰	Substrate of at least four different protein kinases. It is probable that phosphorylation plays a role in the regulation of synapsin-1 in the nerve terminal. Phosphorylated upon DNA damage, probably by ATM or ATR.
细胞定位	Cell junction > synapse. Golgi apparatus.

图片



Western blot - Anti-Synapsin I antibody - Synaptic Marker (ab64581)

This image is courtesy of an anonymous Abreview

Anti-Synapsin I antibody - Synaptic Marker (ab64581) at 1/5000 dilution + Rat whole brain tissue lysate at 15 µg

Secondary

Donkey anti-Rabbit IgG at 1/5000 dilution

Developed using the ECL technique.

Performed under reducing conditions.

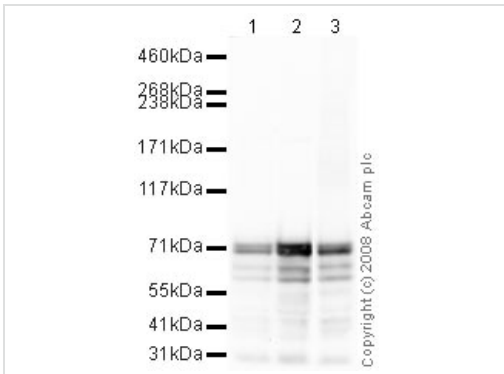
Predicted band size: 74 kDa

Observed band size: 80,85 kDa

Exposure time: 15 seconds

Blocked with 5% milk for 1 hour at 25°C.

Sample was incubated with primary antibody for 18 hours at 4°C in TBS + 0.1% Tween.



Western blot - Anti-Synapsin I antibody - Synaptic Marker (ab64581)

All lanes : Anti-Synapsin I antibody - Synaptic Marker (ab64581) at 1 µg/ml

Lane 1 : Spinal Cord (Mouse) Tissue Lysate

Lane 2 : Brain (Mouse) Tissue Lysate

Lane 3 : Brain (Rat) Tissue Lysate - normal tissue

Lysates/proteins at 10 µg per lane.

Secondary

All lanes : Goat polyclonal to Rabbit IgG - H&L - Pre-Adsorbed (HRP) at 1/3000 dilution

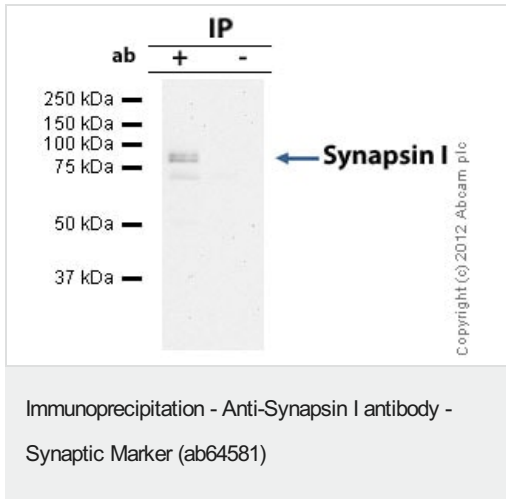
Performed under reducing conditions.

Predicted band size: 74 kDa

Observed band size: 70,74 kDa

The immunogen for ab64581 is predicted to recognise both the 70 kDa and 74 kDa isoforms of Synapsin I. Synapsin I is also known to contain a number of potential phosphorylation and glycosylation

sites (SwissProt data).



Synapsin I - Synaptic Marker was immunoprecipitated using 0.5mg Mouse Brain whole tissue lysate, 5µg of Rabbit polyclonal to Synapsin I - Synaptic Marker and 50µl of protein G magnetic beads (+). No antibody was added to the control (-).

The antibody was incubated under agitation with Protein G beads for 10min, Mouse Brain whole tissue lysate diluted in RIPA buffer was added to each sample and incubated for a further 10min under agitation.

Proteins were eluted by addition of 40µl SDS loading buffer and incubated for 10min at 70°C; 10µl of each sample was separated on a SDS PAGE gel, transferred to a nitrocellulose membrane, blocked with 5% BSA and probed with ab64581.

Secondary: Goat polyclonal to mouse IgG light chain specific (HRP) at 1/5000 dilution.

Band: 80kDa: Synapsin I - Synaptic Marker contains a number of potential glycosylation sites (SwissProt) which may explain the higher migrating band.

Please note: All products are "FOR RESEARCH USE ONLY. NOT FOR USE IN DIAGNOSTIC PROCEDURES"

Our Abpromise to you: Quality guaranteed and expert technical support

- Replacement or refund for products not performing as stated on the datasheet
- Valid for 12 months from date of delivery
- Response to your inquiry within 24 hours
- We provide support in Chinese, English, French, German, Japanese and Spanish
- Extensive multi-media technical resources to help you
- We investigate all quality concerns to ensure our products perform to the highest standards

If the product does not perform as described on this datasheet, we will offer a refund or replacement. For full details of the Abpromise, please visit <https://www.abcam.cn/abpromise> or contact our technical team.

Terms and conditions

- Guarantee only valid for products bought direct from Abcam or one of our authorized distributors