

Anti-Swine Influenza A Hemagglutinin antibody ab91530

1 图像

概述

产品名称	Anti-Swine甲型流感Hemagglutinin抗体
描述	兔多克隆抗体to Swine甲型流感Hemagglutinin
宿主	Rabbit
特异性	ab91530 is specific for the Swine Influenza A (H1N1) Hemagglutinin and will not recognize the corresponding Hemagglutinin from the seasonal H1N1 influenza virus.
经测试应用	适用于: WB, ELISA
种属反应性	与反应: Influenza A
免疫原	Synthetic peptide containing the sequence specific to the novel Swine Influenza A (H1N1) Hemagglutinin protein (Genbank ACQ76314).
阳性对照	Recombinant seasonal influenza and Swine Influenza A (H1N1) Hemagglutinin proteins.
常规说明	

The genetic make-up of this swine flu virus is unlike any other: it is an H1N1 strain that combines a triple assortment first identified in 1998 including human, swine, and avian influenza with two new pig H3N2 virus genes from Eurasia, themselves of recent human origin.

The Life Science industry has been in the grips of a reproducibility crisis for a number of years. Abcam is leading the way in addressing this with our range of recombinant monoclonal antibodies and knockout edited cell lines for gold-standard validation. Please check that this product meets your needs before purchasing.

If you have any questions, special requirements or concerns, please send us an inquiry and/or contact our Support team ahead of purchase. Recommended alternatives for this product can be found below, along with publications, customer reviews and Q&As

性能

形式	Liquid
存放说明	Shipped at 4°C. Store at +4°C.
存储溶液	pH: 7.2 Preservative: 0.02% Sodium azide Constituent: PBS
纯度	Immunogen affinity purified

纯化说明

Affinity chromatography purified via peptide column.

Primary antibody说明

The genetic make-up of this swine flu virus is unlike any other: it is an H1N1 strain that combines a triple assortment first identified in 1998 including human, swine, and avian influenza with two new pig H3N2 virus genes from Eurasia, themselves of recent human origin.

克隆

多克隆

同种型

IgG

应用

The Abpromise guarantee

Abpromise™承诺保证使用ab91530于以下的经测试应用

“应用说明”部分下显示的仅为推荐的起始稀释度;实际最佳的稀释度/浓度应由使用者检定。

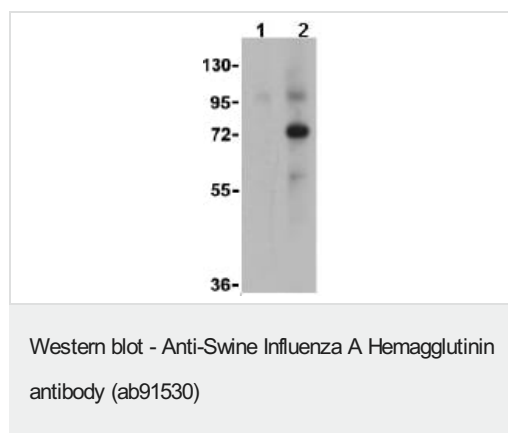
应用	Ab评论	说明
WB		Use a concentration of 2 µg/ml. Predicted molecular weight: 63 kDa.
ELISA		Use at an assay dependent concentration.

靶标

相关性

In early 2009, a novel swine-origin influenza A (H1N1) virus was identified in specimens obtained from patients in Mexico and the United States. The virus spread quickly around the world and on June 11, 2009, the World Health Organization declared it a pandemic. Influenza A virus has one of sixteen possible Hemagglutinin (HA) surface proteins and one of nine possible Neuraminidase (NA) surface proteins. The Hemagglutinin protein facilitates viral attachment while Neuraminidase is involved in viral release. These proteins also elicit immune responses that prevent infection or independently reduce viral replication.

图片



All lanes : Anti-Swine Influenza A Hemagglutinin antibody (ab91530) at 2 µg/ml

Lane 1 : Seasonal Influenza A (H1N1) Hemagglutinin

Lane 2 : Swine Influenza A (H1N1) Hemagglutinin

Lysates/proteins at 15 µg/ml per lane.

Predicted band size: 63 kDa

Please note: All products are "FOR RESEARCH USE ONLY. NOT FOR USE IN DIAGNOSTIC PROCEDURES"

Our Abpromise to you: Quality guaranteed and expert technical support

- Replacement or refund for products not performing as stated on the datasheet
- Valid for 12 months from date of delivery
- Response to your inquiry within 24 hours

- We provide support in Chinese, English, French, German, Japanese and Spanish
- Extensive multi-media technical resources to help you
- We investigate all quality concerns to ensure our products perform to the highest standards

If the product does not perform as described on this datasheet, we will offer a refund or replacement. For full details of the Abpromise, please visit <https://www.abcam.cn/abpromise> or contact our technical team.

Terms and conditions

- Guarantee only valid for products bought direct from Abcam or one of our authorized distributors