

Anti-Survivin antibody ab469

★★★★★ [10 Abreviews](#) [128 References](#) [8 图像](#)

概述

产品名称	Anti-Survivin抗体
描述	兔多克隆抗体to Survivin
宿主	Rabbit
经测试应用	适用于: ICC/IF, WB, IHC-P, ELISA, Flow Cyt, IP, RIP
种属反应性	与反应: Mouse, Rat, Cow, Cat, Dog, Human
免疫原	Recombinant full length protein corresponding to Human Survivin . Database link: O15392
常规说明	<p>The Life Science industry has been in the grips of a reproducibility crisis for a number of years. Abcam is leading the way in addressing this with our range of recombinant monoclonal antibodies and knockout edited cell lines for gold-standard validation. Please check that this product meets your needs before purchasing.</p> <p>If you have any questions, special requirements or concerns, please send us an inquiry and/or contact our Support team ahead of purchase. Recommended alternatives for this product can be found below, along with publications, customer reviews and Q&As</p>

性能

形式	Liquid
存放说明	Shipped at 4°C. Store at +4°C short term (1-2 weeks). Upon delivery aliquot. Store at -20°C long term. Avoid freeze / thaw cycle.
存储溶液	pH: 7.40 Preservative: 0.05% Sodium azide Constituents: 0.876% Sodium chloride, 99% Tris glycine
纯度	Immunogen affinity purified
克隆	多克隆
同种型	IgG

应用

The Abpromise guarantee

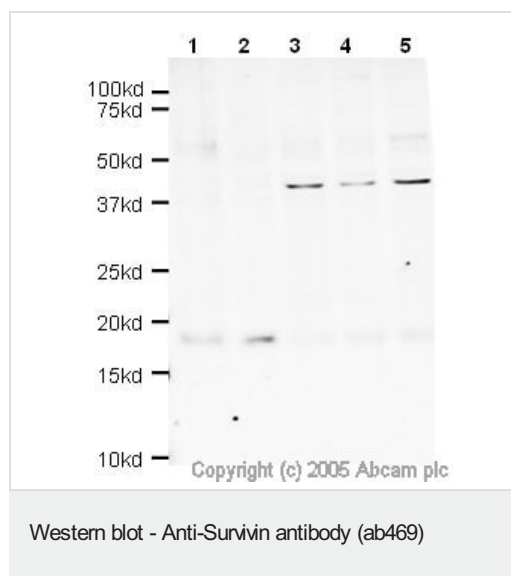
Abpromise™ 承诺保证使用ab469于以下的经测试应用

“应用说明”部分 下显示的仅为推荐的起始稀释度;实际最佳的稀释度/浓度应由使用者检定。

应用	Ab评论	说明
ICC/IF	★★★★★ (2)	1/250. See Abreview by William Moore; fix with formaldehyde.
WB	★★★★★ (4)	Use a concentration of 1 µg/ml. Predicted molecular weight: 16 kDa. Found to work at 1/5000 dilution.
IHC-P	★★★★★ (3)	Use a concentration of 0.5 µg/ml. Perform heat mediated antigen retrieval via the pressure cooker method before commencing with IHC staining protocol.
ELISA		Use at an assay dependent concentration.
Flow Cyt		Use at an assay dependent concentration. ab171870 - Rabbit polyclonal IgG, is suitable for use as an isotype control with this antibody.
IP	★★★★★ (1)	Use at an assay dependent concentration. Recommended to use at 5-7µg/ml.
RIP		Use at an assay dependent concentration. PubMed: 19542185

靶标

功能	Component of the chromosomal passenger complex (CPC), a complex that acts as a key regulator of mitosis. The CPC complex has essential functions at the centromere in ensuring correct chromosome alignment and segregation and is required for chromatin-induced microtubule stabilization and spindle assembly. The complex with RAN plays a role in mitotic spindle formation by serving as a physical scaffold to help deliver the RAN effector molecule TPX2 to microtubules. May play a role in neoplasia. May counteract a default induction of apoptosis in G2/M phase. Inhibitor of caspase-3 and caspase-7. Isoform 2 and isoform 3 do not appear to play vital roles in mitosis. Isoform 3 shows a marked reduction in its anti-apoptotic effects when compared with the displayed wild-type isoform.
组织特异性	Expressed only in fetal kidney and liver, and to lesser extent, lung and brain. Abundantly expressed in adenocarcinoma (lung, pancreas, colon, breast, and prostate) and in high-grade lymphomas. Also expressed in various renal cell carcinoma cell lines.
序列相似性	Belongs to the IAP family. Contains 1 BIR repeat.
发展阶段	Expression is cell cycle-dependent and peaks at mitosis.
结构域	The BIR repeat is necessary and sufficient for HBXIP binding.
翻译后修饰	Ubiquitination is required for centrosomal targeting. In vitro phosphorylation at Thr-117 by AURKB/STK12 prevents interaction with INCENP and localization to mitotic chromosomes.
细胞定位	Cytoplasm. Nucleus. Chromosome. Chromosome > centromere. Cytoplasm > cytoskeleton > spindle. Localizes on chromosome arms and inner centromeres from prophase through metaphase and then transferring to the spindle midzone and midbody from anaphase through cytokinesis. Colocalizes with AURKB at mitotic chromosomes.



All lanes : Anti-Survivin antibody (ab469) at 1 µg/ml

Lane 1 : HeLa Nuclear

Lane 2 : HeLa whole cell lysate

Lane 3 : A431 cell lysate

Lane 4 : Jurkat cell lysate

Lane 5 : HEK293 cell lysate

Lysates/proteins at 20 µg per lane.

Secondary

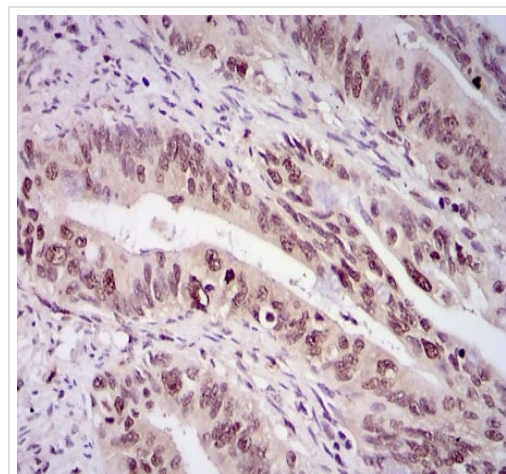
All lanes : Alexa Fluor anti-rabbit at 1/5000 dilution

Performed under reducing conditions.

Predicted band size: 16 kDa

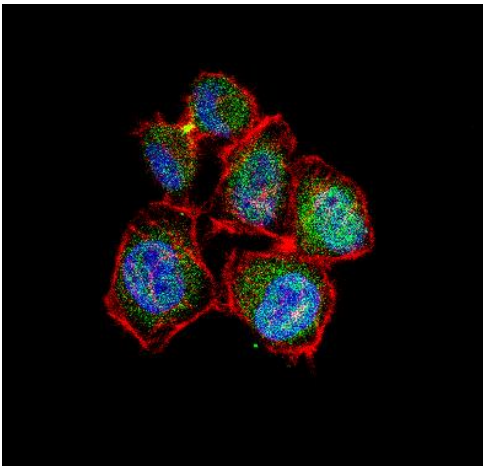
Observed band size: 18 kDa

Additional bands at: 37 kDa, 50 kDa. We are unsure as to the identity of these extra bands.



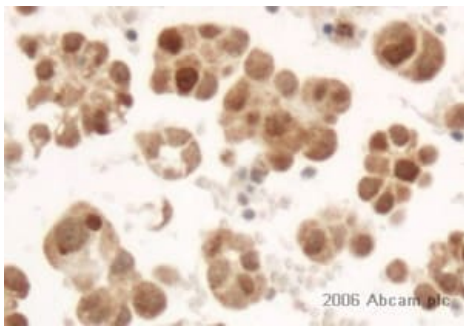
Immunohistochemistry (Formalin/PFA-fixed paraffin-embedded sections) - Anti-Survivin antibody (ab469)

Paraffin-embedded human rectal cancer tissue stained for Survivin using ab469 at 0.5 µg/ml in immunohistochemical analysis, using DAB with hematoxylin counterstain.



Immunocytochemistry/ Immunofluorescence - Anti-Survivin antibody (ab469)

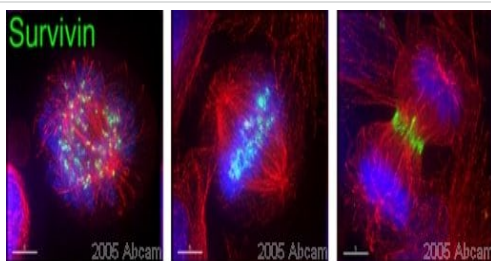
HeLa (human epithelial cell line from cervix adenocarcinoma) cells stained for Survivin (green) using ab469 at 1/10 dilution in ICC/IF. An Alexa Fluor 488-conjugated Goat to rabbit IgG was used as secondary antibody (green). Actin filaments were labeled with Alexa Fluor 568 phalloidin (red). DAPI was used to stain the cell nuclei (blue).



Immunohistochemistry (Formalin/PFA-fixed paraffin-embedded sections) - Anti-Survivin antibody (ab469)

This image is courtesy of an Abreview submitted by Dr Ben Davidson

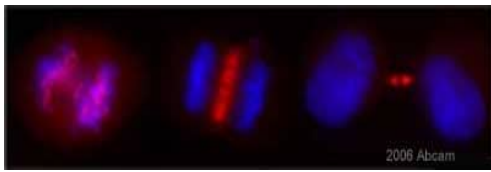
ab469 staining Survivin from Human Ovarian carcinoma tumour tissue sections by Immunohistochemistry (Formalin-fixed paraffin-embedded sections). Heat mediated antigen retrieval was performed (Citrate buffer pH=6, microwave oven) and the tissue was then formaldehyde fixed and blocked (Hydrogen peroxide 0.03%). An HRP conjugated goat anti-rabbit was used as the secondary antibody.



Immunocytochemistry/ Immunofluorescence - Anti-Survivin antibody (ab469)

This image is courtesy of William Moore

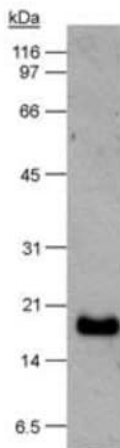
HeLa cells ([ab150035](#)) in prometaphase, metaphase and anaphase stained with anti-Survivin (green), anti-tubulin (red) and DAPI (blue). These images were kindly supplied as part of the review submitted by William Moore, University of Dundee, UK.



Immunocytochemistry/ Immunofluorescence - Anti-Survivin antibody (ab469)

ab469 at a 1/400 dilution staining HeLa cells by Immunocytochemistry. The antibody was incubated with the cells for 1 hour and then was detected using a Texas Red conjugated Goat anti-rabbit antibody.

This image is courtesy of an Abreview by **Sandrine Ruchaud** submitted on **30 March 2006**.



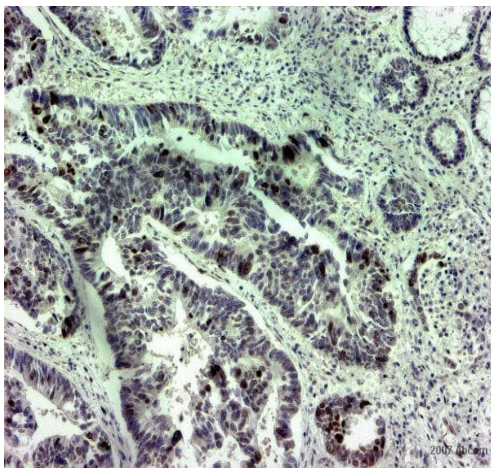
Western blot - Anti-Survivin antibody (ab469)

Anti-Survivin antibody (ab469) at 1 µg/ml + HeLa (human epithelial cell line from cervix adenocarcinoma) whole cell lysate at 30 µg

Developed using the ECL technique.

Predicted band size: 16 kDa

Exposure time: 1 minute



Immunohistochemistry (Formalin/PFA-fixed paraffin-embedded sections) - Anti-Survivin antibody (ab469)

This image is courtesy of an Abreview submitted by Mr. Rudolf Jung.

Paraformaldehyde-fixed, paraffin-embedded human colon carcinoma tissue stained for Survivin using ab469 at 1/500 dilution in immunohistochemical analysis.

Please note: All products are "FOR RESEARCH USE ONLY. NOT FOR USE IN DIAGNOSTIC PROCEDURES"

Our Abpromise to you: Quality guaranteed and expert technical support

- Replacement or refund for products not performing as stated on the datasheet
- Valid for 12 months from date of delivery
- Response to your inquiry within 24 hours
- We provide support in Chinese, English, French, German, Japanese and Spanish
- Extensive multi-media technical resources to help you
- We investigate all quality concerns to ensure our products perform to the highest standards

If the product does not perform as described on this datasheet, we will offer a refund or replacement. For full details of the Abpromise, please visit <https://www.abcam.cn/abpromise> or contact our technical team.

Terms and conditions

- Guarantee only valid for products bought direct from Abcam or one of our authorized distributors