

# Anti-SUR1 antibody ab217633

[1 References](#) [2 图像](#)

### 概述

---

产品名称	Anti-SUR1抗体
描述	兔多克隆抗体to SUR1
宿主	Rabbit
经测试应用	适用于: IHC-P, WB
种属反应性	与反应: Mouse, Rat 预测可用于: Human 
免疫原	Synthetic peptide within Human SUR1 aa 332-355 conjugated to keyhole limpet haemocyanin. The exact sequence is proprietary. Database link: <a href="#">Q09428</a>
阳性对照	IHC-P: Mouse intestine tissue.
常规说明	<p>The Life Science industry has been in the grips of a reproducibility crisis for a number of years. Abcam is leading the way in addressing this with our range of recombinant monoclonal antibodies and knockout edited cell lines for gold-standard validation. Please check that this product meets your needs before purchasing.</p> <p>If you have any questions, special requirements or concerns, please send us an inquiry and/or contact our Support team ahead of purchase. Recommended alternatives for this product can be found below, along with publications, customer reviews and Q&amp;As</p>

### 性能

---

形式	Liquid
存放说明	Shipped at 4°C. Store at +4°C short term (1-2 weeks). Upon delivery aliquot. Store at -20°C long term. Avoid freeze / thaw cycle.
存储溶液	pH: 7.40 Preservative: 0.02% Proclin 300 Constituents: 50% Glycerol (glycerin, glycerine), 1% BSA, 48.98% TBS, 1X
纯度	Protein A purified
克隆	多克隆
同种型	IgG

## 应用

The Abpromise guarantee **Abpromise™**承诺保证使用ab217633于以下的经测试应用

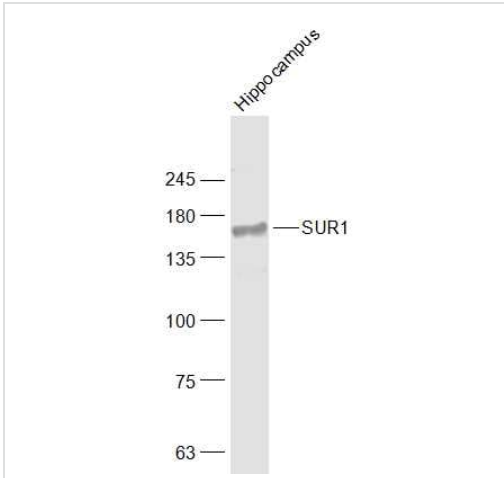
“应用说明”部分 下显示的仅为推荐的起始稀释度;实际最佳的稀释度/浓度应由使用者检定。

应用	Ab评论	说明
IHC-P		1/100 - 1/500.
WB		1/1000.

## 靶标

功能	Putative subunit of the beta-cell ATP-sensitive potassium channel (KATP). Regulator of ATP-sensitive K(+) channels and insulin release.
疾病相关	<p>Defects in ABCC8 are a cause of leucine-induced hypoglycemia (LIH) [MIM:240800]; also known as leucine-sensitive hypoglycemia of infancy. LIH is a rare cause of hypoglycemia and is described as a condition in which symptomatic hypoglycemia is provoked by high protein feedings. Hypoglycemia is also elicited by administration of oral or intravenous infusions of a single amino acid, leucine.</p> <p>Defects in ABCC8 are the cause of familial hyperinsulinemic hypoglycemia type 1 (HHF1) [MIM:256450]; also known as persistent hyperinsulinemic hypoglycemia of infancy (PHHI) or congenital hyperinsulinism. HHF is the most common cause of persistent hypoglycemia in infancy and is due to defective negative feedback regulation of insulin secretion by low glucose levels. It causes nesidioblastosis, a diffuse abnormality of the pancreas in which there is extensive, often disorganized formation of new islets. Unless early and aggressive intervention is undertaken, brain damage from recurrent episodes of hypoglycemia may occur.</p> <p>Defects in ABCC8 are a cause of diabetes mellitus permanent neonatal (PNDM) [MIM:606176]. PNDM is a rare form of diabetes distinct from childhood-onset autoimmune diabetes mellitus type 1. It is characterized by insulin-requiring hyperglycemia that is diagnosed within the first months of life. Permanent neonatal diabetes requires lifelong therapy.</p> <p>Defects in ABCC8 are the cause of transient neonatal diabetes mellitus type 2 (TNDM2) [MIM:610374]. Neonatal diabetes is a form of diabetes mellitus defined by the onset of mild-to-severe hyperglycemia within the first months of life. Transient neonatal diabetes remits early, with a possible relapse during adolescence.</p>
序列相似性	<p>Belongs to the ABC transporter superfamily. ABCC family. Conjugate transporter (TC 3.A.1.208) subfamily.</p> <p>Contains 2 ABC transmembrane type-1 domains.</p> <p>Contains 2 ABC transporter domains.</p>
细胞定位	Membrane.

## 图片

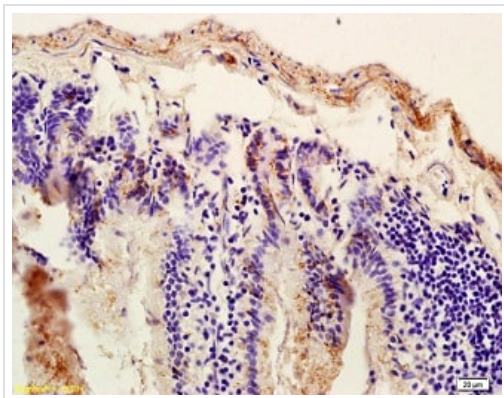


Western blot - Anti-SUR1 antibody (ab217633)

Anti-SUR1 antibody (ab217633) at 1/1000 dilution + Rat hippocampus lysates

**Secondary**

Conjugated secondary antibody at 1/20000 dilution



Immunohistochemistry (Formalin/PFA-fixed paraffin-embedded sections) - Anti-SUR1 antibody (ab217633)

Immunohistochemical analysis of formalin-fixed and paraffin-embedded mouse intestine tissue labeling SUR1 with ab217633 at 1/200 dilution, followed by conjugation to the secondary antibody and DAB staining.

**Please note:** All products are "FOR RESEARCH USE ONLY. NOT FOR USE IN DIAGNOSTIC PROCEDURES"

**Our Abpromise to you: Quality guaranteed and expert technical support**

- Replacement or refund for products not performing as stated on the datasheet
- Valid for 12 months from date of delivery
- Response to your inquiry within 24 hours
- We provide support in Chinese, English, French, German, Japanese and Spanish
- Extensive multi-media technical resources to help you
- We investigate all quality concerns to ensure our products perform to the highest standards

If the product does not perform as described on this datasheet, we will offer a refund or replacement. For full details of the Abpromise, please visit <https://www.abcam.cn/abpromise> or contact our technical team.

## **Terms and conditions**

---

- Guarantee only valid for products bought direct from Abcam or one of our authorized distributors