

Anti-Superoxide Dismutase 3/EC-SOD antibody ab21974

★★★★★ [2 Abreviews](#) [12 References](#) [3 图像](#)

概述

产品名称	Anti-Superoxide Dismutase 3/EC-SOD抗体
描述	兔多克隆抗体to Superoxide Dismutase 3/EC-SOD
宿主	Rabbit
特异性	Specific to human extracellular SOD (SOD3). Under reducing conditions the SOD3 antibody shows a major band at approximately 30kDa which is the approximate molecular weight of the SOD3 monomer and two faint minor bands at approximately 50 and 70 kDa. The SOD3 molecule is a homotetramer (4 monomers) with a combined molecular weight of around a 130 Kda. The two faint bands are probably dimers and triplicates of the monomer. This pattern is common with many tetramers (such as cellular glutathione peroxidase) as there is incomplete reduction with DTT.
经测试应用	适用于: IHC-P, IHC-Fr, WB
种属反应性	与反应: Human
免疫原	Synthetic peptide corresponding to Human Superoxide Dismutase 3/EC-SOD (N terminal). Sequence: WTGEDSAEPNSDSA EWIRD Run BLAST with Run BLAST with
阳性对照	IHC: cortex of Dementia patient with Lewy bodies WB: human lung lysate
常规说明	<p>The Life Science industry has been in the grips of a reproducibility crisis for a number of years. Abcam is leading the way in addressing this with our range of recombinant monoclonal antibodies and knockout edited cell lines for gold-standard validation. Please check that this product meets your needs before purchasing.</p> <p>If you have any questions, special requirements or concerns, please send us an inquiry and/or contact our Support team ahead of purchase. Recommended alternatives for this product can be found below, along with publications, customer reviews and Q&As</p>

性能

形式	Liquid
存放说明	Shipped at 4°C. Upon delivery aliquot and store at -20°C or -80°C. Avoid repeated freeze / thaw cycles.
存储溶液	Preservative: 0.02% Thimerosal (merthiolate)

纯度	Constituent: Whole serum
克隆	Whole antiserum
同种型	多克隆
	IgG

应用

The Abpromise guarantee **Abpromise™**承诺保证使用ab21974于以下的经测试应用

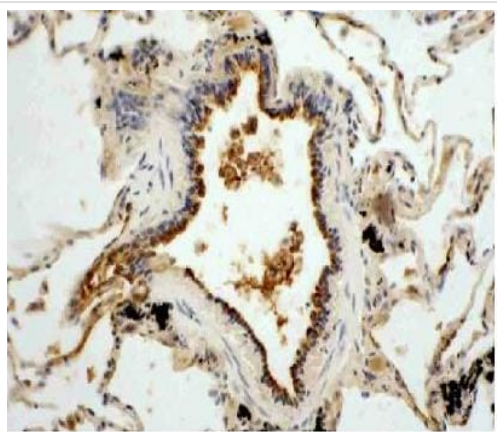
“应用说明”部分 下显示的仅为推荐的起始稀释度;实际最佳的稀释度/浓度应由使用者检定。

应用	Ab评论	说明
IHC-P	★★★★★ (1)	Use at an assay dependent concentration.
IHC-Fr		1/200 - 1/2000.
WB	★★★★★ (1)	1/1000 - 1/4000. Detects a band of approximately 31 kDa (predicted molecular weight: 26 kDa).

靶标

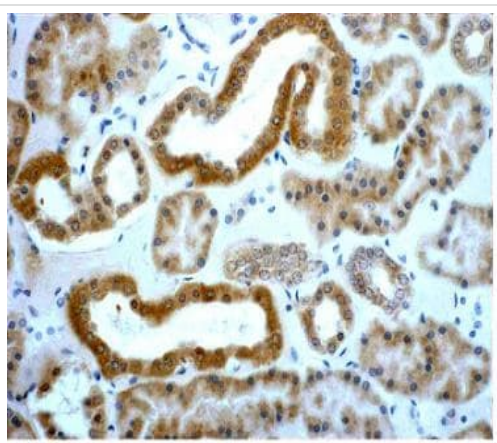
功能	Protect the extracellular space from toxic effect of reactive oxygen intermediates by converting superoxide radicals into hydrogen peroxide and oxygen.
组织特异性	Expressed in blood vessels, heart, lung, kidney and placenta. Major SOD isoenzyme in extracellular fluids such as plasma, lymph and synovial fluid.
序列相似性	Belongs to the Cu-Zn superoxide dismutase family.
细胞定位	Secreted > extracellular space. 99% of EC-SOD is anchored to heparan sulfate proteoglycans in the tissue interstitium, and 1% is located in the vasculature in equilibrium between the plasma and the endothelium.

图片



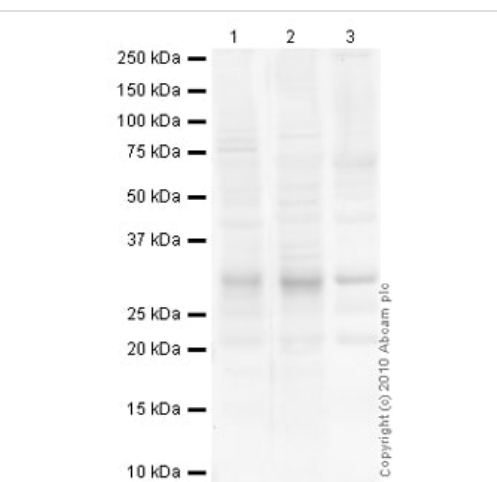
Immunohistochemistry (Frozen sections) - Anti-Superoxide Dismutase 3/EC-SOD antibody (ab21974)

ab21974 (1/1000) staining of ciliated bronchiolar cells in human lung.



Immunohistochemistry (Frozen sections) - Anti-Superoxide Dismutase 3/EC-SOD antibody (ab21974)

ab21974 (1/1000) staining of human kidney tubule cells.



Western blot - Anti-Superoxide Dismutase 3/EC-SOD antibody (ab21974)

All lanes : Anti-Superoxide Dismutase 3/EC-SOD antibody (ab21974) at 1/500 dilution

Lane 1 : Lung (Human) Tissue Lysate

Lane 2 : Human kidney tissue lysate - total protein ([ab30203](#))

Lane 3 : Human placenta tissue lysate - total protein ([ab29745](#))

Lysates/proteins at 10 µg per lane.

Secondary

All lanes : Goat Anti-Rabbit IgG H&L (HRP) preadsorbed ([ab97080](#)) at 1/5000 dilution

Developed using the ECL technique.

Performed under reducing conditions.

Predicted band size: 26 kDa

Observed band size: 31 kDa

Additional bands at: 75 kDa. We are unsure as to the identity of these extra bands.

Exposure time: 30 seconds

Superoxide Dismutase 3 / EC-SOD contains a number of potential glycosylation sites (SwissProt) which may explain its migration at a higher molecular weight than predicted.

Please note: All products are "FOR RESEARCH USE ONLY. NOT FOR USE IN DIAGNOSTIC PROCEDURES"

Our Abpromise to you: Quality guaranteed and expert technical support

- Replacement or refund for products not performing as stated on the datasheet
- Valid for 12 months from date of delivery
- Response to your inquiry within 24 hours
- We provide support in Chinese, English, French, German, Japanese and Spanish
- Extensive multi-media technical resources to help you
- We investigate all quality concerns to ensure our products perform to the highest standards

If the product does not perform as described on this datasheet, we will offer a refund or replacement. For full details of the Abpromise, please visit <https://www.abcam.cn/abpromise> or contact our technical team.

Terms and conditions

- Guarantee only valid for products bought direct from Abcam or one of our authorized distributors