

Anti-Superoxide Dismutase 3/EC-SOD antibody [4G11G6] ab80946

★★★★★ [1 Abreviews](#) [13 References](#) [3 图像](#)

概述

产品名称	Anti-Superoxide Dismutase 3/EC-SOD抗体[4G11G6]
描述	小鼠单克隆抗体[4G11G6] to Superoxide Dismutase 3/EC-SOD
宿主	Mouse
特异性	Detects extracellular Superoxide Dismutase 3/EC-SOD.
经测试应用	适用于: Flow Cyt, ELISA, ICC/IF, IHC-Fr, WB, IHC-P
种属反应性	与反应: Mouse, Rat, Human
免疫原	Full length native protein (purified) corresponding to Human Superoxide Dismutase 3/EC-SOD. Database link: P08294
阳性对照	Human cartilage lysate
常规说明	<p>The Life Science industry has been in the grips of a reproducibility crisis for a number of years. Abcam is leading the way in addressing this with our range of recombinant monoclonal antibodies and knockout edited cell lines for gold-standard validation. Please check that this product meets your needs before purchasing.</p> <p>If you have any questions, special requirements or concerns, please send us an inquiry and/or contact our Support team ahead of purchase. Recommended alternatives for this product can be found below, along with publications, customer reviews and Q&As</p>

性能

形式	Liquid
存放说明	Shipped at 4°C. Upon delivery aliquot and store at -20°C. Avoid repeated freeze / thaw cycles.
存储溶液	Preservative: 0.09% Sodium azide Constituents: 50% Glycerol (glycerin, glycerine), PBS
纯度	Protein G purified
克隆	单克隆
克隆编号	4G11G6
同种型	IgG1
轻链类型	kappa

应用

The Abpromise guarantee **Abpromise™** 承诺保证使用ab80946于以下的经测试应用

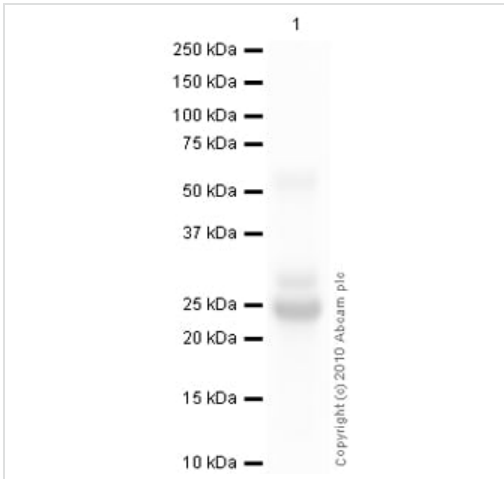
“应用说明”部分下显示的仅为推荐的起始稀释度;实际最佳的稀释度/浓度应由使用者检定。

应用	Ab评论	说明
Flow Cyt		Use 2µg for 10 ⁶ cells. ab170190 - Mouse monoclonal IgG1, is suitable for use as an isotype control with this antibody.
ELISA		Use at an assay dependent concentration.
ICC/IF		Use at an assay dependent concentration.
IHC-Fr		Use at an assay dependent concentration.
WB	★★★★★ (1)	1/1000. Detects a band of approximately 35 kDa (predicted molecular weight: 26 kDa).
IHC-P		1/100.

靶标

功能	Protect the extracellular space from toxic effect of reactive oxygen intermediates by converting superoxide radicals into hydrogen peroxide and oxygen.
组织特异性	Expressed in blood vessels, heart, lung, kidney and placenta. Major SOD isoenzyme in extracellular fluids such as plasma, lymph and synovial fluid.
序列相似性	Belongs to the Cu-Zn superoxide dismutase family.
细胞定位	Secreted > extracellular space. 99% of EC-SOD is anchored to heparan sulfate proteoglycans in the tissue interstitium, and 1% is located in the vasculature in equilibrium between the plasma and the endothelium.

图片



Western blot - Anti-Superoxide Dismutase 3/EC-SOD antibody [4G11G6] (ab80946)

Anti-Superoxide Dismutase 3/EC-SOD antibody [4G11G6] (ab80946) at 1 µg/ml + Lung (Mouse) Tissue Lysate at 10 µg

Secondary

Goat Anti-Mouse IgG H&L (HRP) preadsorbed (**ab97040**) at 1/5000 dilution

Developed using the ECL technique.

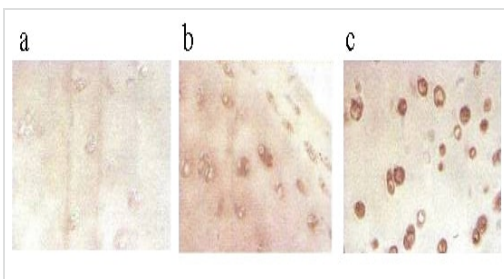
Performed under reducing conditions.

Predicted band size: 26 kDa

Observed band size: 25 kDa

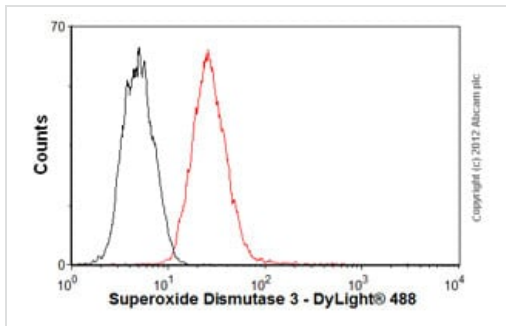
Additional bands at: 54 kDa. We are unsure as to the identity of these extra bands.

Exposure time: 1 minute



Immunohistochemistry (Formalin/PFA-fixed paraffin-embedded sections) - Anti-Superoxide Dismutase 3/EC-SOD antibody [4G11G6] (ab80946)

ab80946 at 1/100 dilution staining Superoxide Dismutase 3/EC-SOD in human cartilage by Immunohistochemistry (Bouin's fixative fixed paraffin-embedded tissue section). Antigen retrieval was done by microwave in citrate buffer. A HRP-conjugated anti mouse secondary was used at 1/10 dilution. Image 'a' represents control, 'b' staining of tissue from young human cartilage and 'c' show staining cartilage of a person suffered from osteoarthritis.



Flow Cytometry - Anti-Superoxide Dismutase 3/EC-SOD antibody [4G11G6] (ab80946)

Overlay histogram showing HEK293 cells stained with ab80946 (red line). The cells were fixed with 80% methanol (5 min) and incubated in 1x PBS / 10% normal goat serum / 0.3M glycine to block non-specific protein-protein interactions. The cells were then incubated with the antibody (ab80946, 2µg/1x10⁶ cells) for 30 min at 22°C. The secondary antibody used was DyLight® 488 goat anti-mouse IgG (H+L) (**ab96879**) at 1/500 dilution for 30 min at 22°C. Isotype control antibody (black line) was mouse IgG1 [ICIGG1] (**ab91353**, 2µg/1x10⁶ cells) used under the same conditions. Acquisition of >5,000 events was performed.

Please note that Abcam do not have any data for use of this antibody on non-fixed cells. We welcome any customer feedback.

Please note: All products are "FOR RESEARCH USE ONLY. NOT FOR USE IN DIAGNOSTIC PROCEDURES"

Our Abpromise to you: Quality guaranteed and expert technical support

- Replacement or refund for products not performing as stated on the datasheet
- Valid for 12 months from date of delivery
- Response to your inquiry within 24 hours
- We provide support in Chinese, English, French, German, Japanese and Spanish
- Extensive multi-media technical resources to help you
- We investigate all quality concerns to ensure our products perform to the highest standards

If the product does not perform as described on this datasheet, we will offer a refund or replacement. For full details of the Abpromise, please visit <https://www.abcam.cn/abpromise> or contact our technical team.

Terms and conditions

- Guarantee only valid for products bought direct from Abcam or one of our authorized distributors