



Anti-SUN2 antibody ab87036

8 References 1 图像

概述	
产品名称	Anti-SUN2抗体
描述	兔多克隆抗体to SUN2
宿主	Rabbit
经测试应用	适用于: ICC
种属反应性	与反应: Mouse
免疫原	Synthetic peptide: MSRRSQRLTRYSDNDG , corresponding to N terminal amino acids 1-18 of Mouse SUN2  Run BLAST with  Run BLAST with
常规说明	<p>The Life Science industry has been in the grips of a reproducibility crisis for a number of years. Abcam is leading the way in addressing this with our range of recombinant monoclonal antibodies and knockout edited cell lines for gold-standard validation. Please check that this product meets your needs before purchasing.</p> <p>If you have any questions, special requirements or concerns, please send us an inquiry and/or contact our Support team ahead of purchase. Recommended alternatives for this product can be found below, along with publications, customer reviews and Q&As</p>
性能	
形式	Liquid
存放说明	Shipped at 4°C. Upon delivery aliquot and store at -20°C. Avoid repeated freeze / thaw cycles.
存储溶液	Preservative: 0.1% Sodium azide Constituent: Whole serum
纯度	Whole antiserum
克隆	多克隆
同种型	IgG
应用	

“应用说明”部分 下显示的仅为推荐的起始稀释度;实际最佳的稀释度/浓度应由使用者检定。

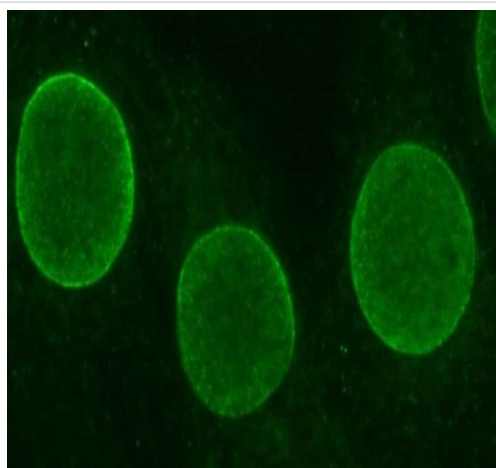
应用	Ab评论	说明
ICC		1/500.

靶标

相关性 SUN proteins form part of the LINC complex - a protein bridge that spans the nuclear envelope linking the nucleoskeleton to the actin cytoskeleton. They are located on the inner nuclear membrane side of the complex. The LINC complex is thought to function in controlling nuclear position, contributing to mechanical resistance and the overall architecture of the cell. SUN2 can exist in a heterodimer with SUN1. Both can interact with lamins and nesprins in the nuclear envelope.

细胞定位 Nuclear membrane, endosome membrane, mitotic spindle organization.

图片



Immunocytochemistry analysis of NIH 3T3 cells labelling SUN2 with ab87036 at 1/500 dilution.

Immunocytochemistry - Anti-SUN2 antibody
(ab87036)

Please note: All products are "FOR RESEARCH USE ONLY. NOT FOR USE IN DIAGNOSTIC PROCEDURES"

Our Abpromise to you: Quality guaranteed and expert technical support

- Replacement or refund for products not performing as stated on the datasheet
- Valid for 12 months from date of delivery
- Response to your inquiry within 24 hours
- We provide support in Chinese, English, French, German, Japanese and Spanish
- Extensive multi-media technical resources to help you
- We investigate all quality concerns to ensure our products perform to the highest standards

If the product does not perform as described on this datasheet, we will offer a refund or replacement. For full details of the Abpromise, please visit <https://www.abcam.cn/abpromise> or contact our technical team.

Terms and conditions

- Guarantee only valid for products bought direct from Abcam or one of our authorized distributors