

Anti-Sumo 2 + Sumo 3 antibody ab3742

★★★★★ [19 Abreviews](#) [91 References](#) [7 图像](#)

概述

产品名称	Anti-Sumo 2 + Sumo 3抗体
描述	兔多克隆抗体to Sumo 2 + Sumo 3
宿主	Rabbit
特异性	Recognises 2 bands representing Sumo 2 and Sumo 3 at 15 and 18kDa in Hela Nuclear extract by Western blotting. Replenishment batches of our polyclonal antibody, ab3742 are tested in WB. Previous batches were additionally validated in ICC/IF and IHC-P. These applications are still expected to work and are covered by our Abpromise guarantee. You may also be interested in our alternative recombinant antibody, ab81371 .
经测试应用	适用于: ICC/IF, WB, IHC-P
种属反应性	与反应: Human 预测可用于: Mouse, Rat, Cow, Pig, Xenopus laevis, Zebrafish, Chinese hamster 
免疫原	Synthetic peptide. This information is proprietary to Abcam and/or its suppliers.
阳性对照	WB: HeLa Nuclear cell lysate. IHC-P: Human colon adenocarcinoma tissue. ICC/IF: HepG2 cells.
常规说明	The Life Science industry has been in the grips of a reproducibility crisis for a number of years. Abcam is leading the way in addressing this with our range of recombinant monoclonal antibodies and knockout edited cell lines for gold-standard validation. Please check that this product meets your needs before purchasing. If you have any questions, special requirements or concerns, please send us an inquiry and/or contact our Support team ahead of purchase. Recommended alternatives for this product can be found below, along with publications, customer reviews and Q&As

性能

形式	Liquid
存放说明	Shipped at 4°C. Store at +4°C short term (1-2 weeks). Upon delivery aliquot. Store at -20°C or -80°C. Avoid freeze / thaw cycle.
存储溶液	pH: 7.40 Preservative: 0.02% Sodium azide Constituent: PBS

Batches of this product that have a concentration < 1mg/ml may have BSA added as a stabilising agent. If you would like information about the formulation of a specific lot, please contact our scientific support team who will be happy to help.

纯度 Immunogen affinity purified
克隆 多克隆
同种型 IgG

应用

The Abpromise guarantee **Abpromise™**承诺保证使用ab3742于以下的经测试应用

“应用说明”部分下显示的仅为推荐的起始稀释度;实际最佳的稀释度/浓度应由使用者检定。

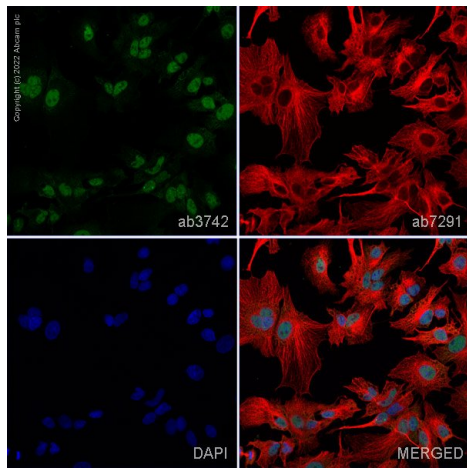
应用	Ab评论	说明
ICC/IF	★★★★★ (3)	1/100.
WB	★★★★★ (14)	1/1000. Detects a band of approximately 15, 18 kDa (predicted molecular weight: 11.6 , 10.8 kDa).
IHC-P	★★★★★ (1)	1/800. Perform heat mediated antigen retrieval before commencing with IHC staining protocol.

靶标

相关性 SUMO proteins, such as Sumo 2 and Sumo 3, post-translationally modify numerous cellular proteins and affect their metabolism and function. However, unlike ubiquitination, which targets proteins for degradation, sumoylation participates in a number of cellular processes, such as nuclear transport, transcriptional regulation, apoptosis, and protein stability. Sumo 2 and Sumo 3 are highly homologous, hence it is very difficult to produce antibodies which distinguish them.

细胞定位 Cytoplasmic (SUMO3) and Nuclear (SUMO2)

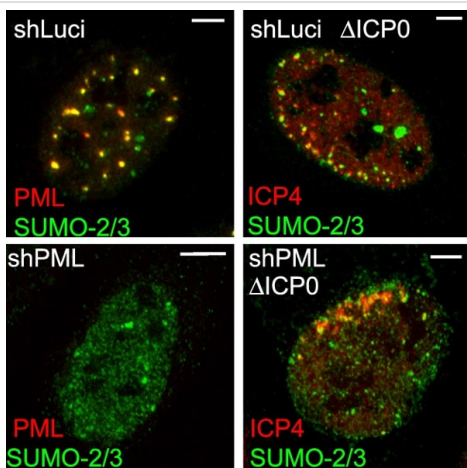
图片



Immunocytochemistry/ Immunofluorescence - Anti-Sumo 2 + Sumo 3 antibody (ab3742)

ab3742 staining Sumo 2 + Sumo 3 in HepG2 cells. The cells were fixed with 4% paraformaldehyde (10 min), permeabilized with 0.1% PBS-Triton X-100 for 5 minutes and then blocked with 1% BSA/10% normal goat serum/0.3M glycine in 0.1%PBS-Tween for 1h. The cells were then incubated overnight at 4°C with ab3742 at 1µg/ml and **ab7291**, Mouse monoclonal [DM1A] to alpha Tubulin - Loading Control. Cells were then incubated with **ab150081**, Goat polyclonal Secondary Antibody to Rabbit IgG - H&L (Alexa Fluor® 488), pre-adsorbed at 1/1000 dilution (shown in green) and **ab150120**, Goat polyclonal Secondary Antibody to Mouse IgG - H&L (Alexa Fluor® 594), pre-adsorbed at 1/1000 dilution (shown in pseudocolour red). Nuclear DNA was labelled with DAPI (shown in blue).

Image was acquired with a high-content analyser (Operetta CLS, Perkin Elmer) and a maximum intensity projection of confocal sections is shown.

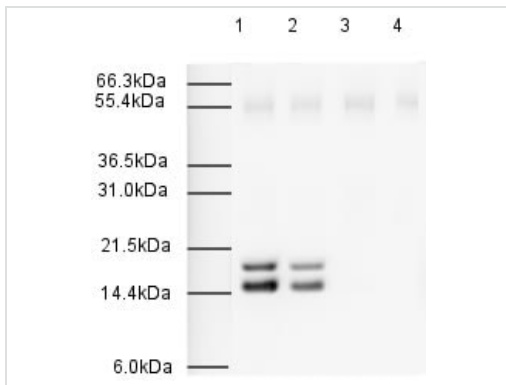


Immunocytochemistry/ Immunofluorescence - Anti-Sumo 2 + Sumo 3 antibody (ab3742)

Left-hand images show uninfected cells and the co-localization of SUMO-2/3 with PML (red) in control (upper rows of each block of 4 images) and PML depleted (low rows of each block of 4 images) HepaRG cells. Right-hand images show typical examples of recruitment of the indicated proteins to sites associated with HSV-1 genomes (ICP4; red) in cells at the edges of ICP0 null mutant (Δ ICP0) plaques in control and PML depleted HepaRG cells. Scale bars indicate 5 µm.

Cells on glass coverslips were fixed with 1.5% formaldehyde in PBS containing 2% sucrose then treated with 0.5% Nonidet P40 substitute in PBS/10% sucrose. SUMO-2/3 was detected with ab3742. An Alexa-conjugated anti-rabbit IgG was used as the secondary antibody.

Image from Cuchet-Lourenço D et al., PLoS Pathog. 2011;7(7):e1002123. Fig 9(B).; doi: 10.1371/journal.ppat.1002123. Reproduced under the Creative Commons license <http://creativecommons.org/licenses/by/4.0/>



Western blot - Anti-Sumo 2 + Sumo 3 antibody (ab3742)

Lanes 1 & 3: Sumo 2+3 antibody (ab3742) at 1/500 dilution

Lanes 2 & 4: Sumo 2+3 antibody (ab3742) at 1/1000 dilution

Lanes 1-4: HeLa nuclear extract at 20 ug

Lane 1: as above

Lane 2: as above

Lane 3: Sumo 2+3 peptide (**ab13760**) at 1 ug/ml

Lane 4: Sumo 2+3 peptide (**ab13760**) at 1 ug/ml

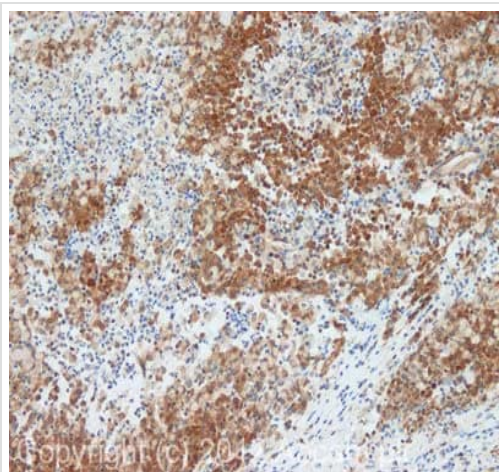
Secondary

Goat polyclonal to Rabbit IgG H&L (HRP) (**ab6721**) at 1/2000 dilution developed using the ECL technique

Performed under reducing conditions.

Exposure time: 1 minute

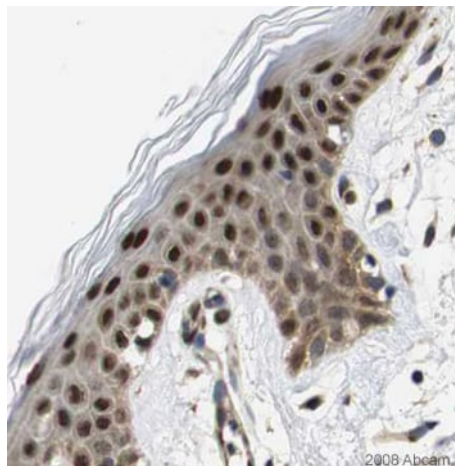
Predicted band sizes : 11.6 & 10.



Immunohistochemistry (Formalin/PFA-fixed paraffin-embedded sections) - Anti-Sumo 2 + Sumo 3 antibody (ab3742)

IHC image of Sumo 2+3 staining in human colon adenocarcinoma formalin fixed paraffin embedded tissue section, performed on a Leica Bond™ system using the standard protocol F. The section was pre-treated using heat mediated antigen retrieval with sodium citrate buffer (pH6, epitope retrieval solution 1) for 20 mins. The section was then incubated with ab3742, 1µg/ml, for 15 mins at room temperature and detected using an HRP conjugated compact polymer system. DAB was used as the chromogen. The section was then counterstained with haematoxylin and mounted with DPX.

For other IHC staining systems (automated and non-automated) customers should optimize variable parameters such as antigen retrieval conditions, primary antibody concentration and antibody incubation times.



Immunohistochemistry (Formalin/PFA-fixed paraffin-embedded sections) - Anti-Sumo 2 + Sumo 3 antibody (ab3742)

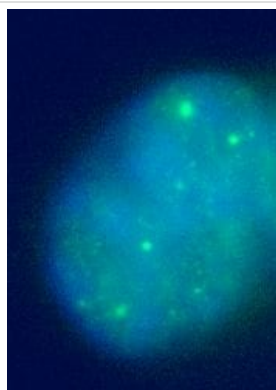
Image courtesy of Human Protein Atlas

Image courtesy of [Human Protein Atlas](http://www.proteinatlas.org)

ab3742 staining Sumo 2 + 3 in Human skin. The paraffin embedded human skin tissue was incubated with ab3742 (1/800 dilution) for 30 mins at room temperature. Antigen retrieval was performed by heat induction in citrate buffer pH 6. Ab3742 was tested in a tissue microarray (TMA) containing a wide range of normal and cancer tissues as well as a cell microarray consisting of a range of commonly used, well characterised human cell lines.

Further results for this antibody can be found at

www.proteinatlas.org

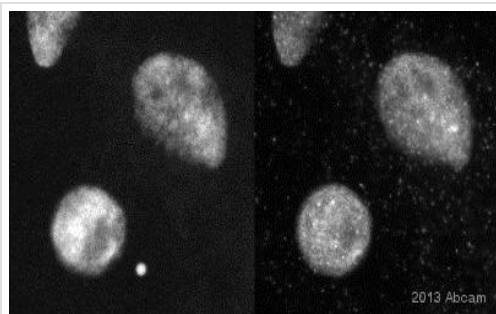


Immunocytochemistry/ Immunofluorescence - Anti-Sumo 2 + Sumo 3 antibody (ab3742)

This image is courtesy of Luke Hughes-Davies and Rhiannon Jade, Gurdon Institute, Cambridge, UK

Immunofluorescent imaging of human cells (U2OS) with ab3742 confirms the specificity of this antibody. Antibody signal is localised exclusively to the nucleus, with diffuse background staining of the nucleoplasm. Intense foci of staining are also evident, corresponding to SUMO-2/3 accumulation in nuclear subdomains such as the PML body. This image is in exact agreement with several published reports (see for example Saitoh H et al.).

IF was performed with a standard paraformaldehyde technique (fixed in PBS buffered PFH 4% for 5 minutes, permeabilised with 0.5% triton-PBS for 5 minutes, blocked with 5% milk / 0.2% tween for one hour. Primary antibody used at 1/100 in 5% milk / 0.2% TWEEN for one hour, secondary antibody for 30 minutes. All blocking and incubation steps carried out at 37 degrees. Nuclei are stained with Hoechst stain.



Immunocytochemistry/ Immunofluorescence - Anti-Sumo 2 + Sumo 3 antibody (ab3742)

This image is courtesy of an Abreview submitted by Andrew Lane

ab3742 staining Sumo 2+3 in Xenopus laevis oocyte cell by ICC/IF (Immunocytochemistry/immunofluorescence). Cells were fixed with formaldehyde, permeabilized with NP-40 0.1% in PBS and blocked with 3% BSA for 60 minutes at 23°C. Samples were incubated with primary antibody (1/250 in PBS + 3% BSA) for 1 hour at 23°C. An undiluted Alexa Fluor®488-conjugated Goat anti-rabbit polyclonal was used as the secondary antibody.

Please note: All products are "FOR RESEARCH USE ONLY. NOT FOR USE IN DIAGNOSTIC PROCEDURES"

Our Abpromise to you: Quality guaranteed and expert technical support

- Replacement or refund for products not performing as stated on the datasheet
- Valid for 12 months from date of delivery
- Response to your inquiry within 24 hours

- We provide support in Chinese, English, French, German, Japanese and Spanish
- Extensive multi-media technical resources to help you
- We investigate all quality concerns to ensure our products perform to the highest standards

If the product does not perform as described on this datasheet, we will offer a refund or replacement. For full details of the Abpromise, please visit <https://www.abcam.cn/abpromise> or contact our technical team.

Terms and conditions

- Guarantee only valid for products bought direct from Abcam or one of our authorized distributors