

Anti-Sumo 2 + Sumo 3 + Sumo 4 antibody [EPR300(2)] ab109196

重组 RabMAb

★★★★★ **3 Abreviews** 4 图像

概述

产品名称	Anti-Sumo 2 + Sumo 3 + Sumo 4抗体[EPR300(2)]
描述	兔单克隆抗体[EPR300(2)] to Sumo 2 + Sumo 3 + Sumo 4
宿主	Rabbit
经测试应用	适用于: WB, IHC-P 不适用于: Flow Cyt or IP
种属反应性	与反应: Human
免疫原	Synthetic peptide. This information is proprietary to Abcam and/or its suppliers.
阳性对照	Paraffin-embedded Human ovarian tissue HeLa and Jurkat cell lysates
常规说明	This product is a recombinant monoclonal antibody, which offers several advantages including: <ul style="list-style-type: none"> - High batch-to-batch consistency and reproducibility - Improved sensitivity and specificity - Long-term security of supply - Animal-free production For more information see here . Our RabMAb [®] technology is a patented hybridoma-based technology for making rabbit monoclonal antibodies. For details on our patents, please refer to RabMAb[®] patents . Mouse, Rat: We have preliminary internal testing data to indicate this antibody may not react with these species. Please contact us for more information.

性能

形式	Liquid
存放说明	Shipped at 4°C. Store at -20°C. Stable for 12 months at -20°C.
存储溶液	pH: 7.20 Preservative: 0.01% Sodium azide Constituents: 9% PBS, 40% Glycerol (glycerin, glycerine), 0.05% BSA, 50% Tissue culture supernatant
纯度	Protein A purified

克隆单克隆

克隆编号EPR300(2)

同种型IgG

应用

The Abpromise guarantee

Abpromise™承诺保证使用ab109196于以下的经测试应用

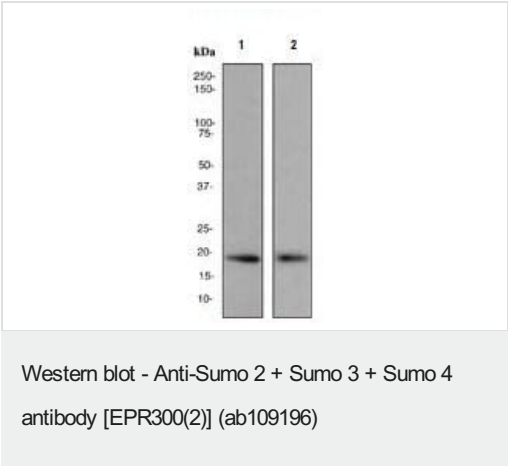
“应用说明”部分 下显示的仅为推荐的起始稀释度;实际最佳的稀释度/浓度应由使用者检定。

应用	Ab评论	说明
WB		1/1000 - 1/10000. Predicted molecular weight: 12 kDa.
IHC-P	★★★★★ (2)	1/100 - 1/250. Perform heat mediated antigen retrieval with citrate buffer pH 6 before commencing with IHC staining protocol.

应用说明

Is unsuitable for Flow Cyt or IP.

图片

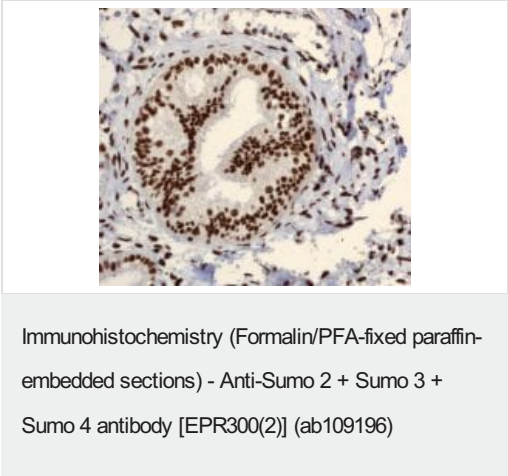


All lanes : Anti-Sumo 2 + Sumo 3 + Sumo 4 antibody [EPR300(2)] (ab109196) at 1/1000 dilution

Lane 1 : HeLa cell lysate
Lane 2 : Jurkat cell lysate

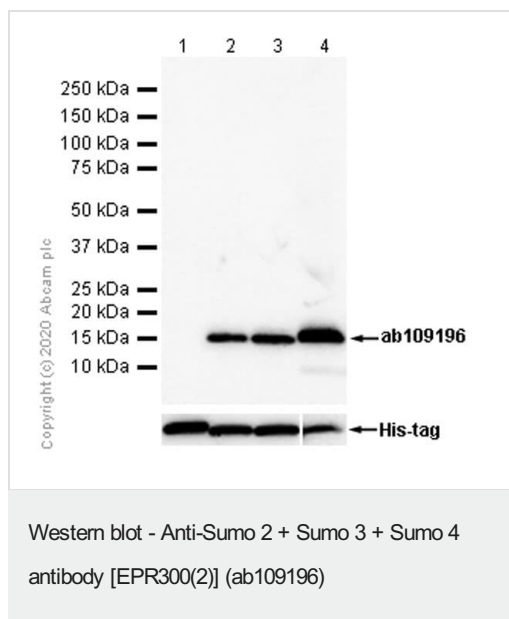
Lysates/proteins at 10 µg per lane.

Predicted band size: 12 kDa



ab109196, at 1/100, staining Sumo 2 + Sumo 3 + Sumo 4 in paraffin-embedded Human ovarian tissue by Immunohistochemistry.

Perform heat mediated antigen retrieval with citrate buffer pH 6 before commencing with IHC staining protocol.



All lanes : Anti-Sumo 2 + Sumo 3 + Sumo 4 antibody [EPR300(2)] (ab109196) at 1/200 dilution

Lane 1 : Recombinant Human Sumo 1 protein ([ab140417](#)) at 0.01 µg

Lane 2 : Recombinant Human Sumo 2 protein ([ab140420](#)) at 0.01 µg

Lane 3 : Recombinant Human Sumo 3 protein ([ab140414](#)) at 0.01 µg

Lane 4 : Recombinant Human Sumo 4 protein ([ab157025](#)) at 0.1 µg

Secondary

All lanes : Goat Anti-Rabbit IgG H&L (HRP) ([ab97051](#)) at 1/20000 dilution

Developed using the ECL technique.

Predicted band size: 12 kDa

Observed band size: 16 kDa

Exposure time: 20 seconds

Blocking buffer: 5% NFDM/TBST

Why choose a recombinant antibody?

<p>Research with confidence Consistent and reproducible results</p>	<p>Long-term and scalable supply Recombinant technology</p>
<p>Success from the first experiment Confirmed specificity</p>	<p>Ethical standards compliant Animal-free production</p>

Anti-Sumo 2 + Sumo 3 + Sumo 4 antibody [EPR300(2)] (ab109196)

Please note: All products are "FOR RESEARCH USE ONLY. NOT FOR USE IN DIAGNOSTIC PROCEDURES"

Our Abpromise to you: Quality guaranteed and expert technical support

- Replacement or refund for products not performing as stated on the datasheet
- Valid for 12 months from date of delivery
- Response to your inquiry within 24 hours

- We provide support in Chinese, English, French, German, Japanese and Spanish
- Extensive multi-media technical resources to help you
- We investigate all quality concerns to ensure our products perform to the highest standards

If the product does not perform as described on this datasheet, we will offer a refund or replacement. For full details of the Abpromise, please visit <https://www.abcam.cn/abpromise> or contact our technical team.

Terms and conditions

- Guarantee only valid for products bought direct from Abcam or one of our authorized distributors