

Anti-STIL/SIL antibody ab89314

[26 References](#) [3 图像](#)

概述

产品名称	Anti-STIL/SIL抗体
描述	兔多克隆抗体to STIL/SIL
宿主	Rabbit
经测试应用	适用于: ICC/IF, WB, IP
种属反应性	与反应: Mouse, Human 预测可用于: Rat, Rabbit, Horse, Guinea pig, Cow, Pig, Chimpanzee, Gorilla, Opossum, Orangutan, Elephant 
免疫原	Synthetic peptide corresponding to Human STIL/SIL aa 1237-1287. Database link: NP_003026.2
常规说明	<p>The Life Science industry has been in the grips of a reproducibility crisis for a number of years. Abcam is leading the way in addressing this with our range of recombinant monoclonal antibodies and knockout edited cell lines for gold-standard validation. Please check that this product meets your needs before purchasing.</p> <p>If you have any questions, special requirements or concerns, please send us an inquiry and/or contact our Support team ahead of purchase. Recommended alternatives for this product can be found below, along with publications, customer reviews and Q&As</p>

性能

形式	Liquid
存放说明	Shipped at 4°C. Upon delivery aliquot and store at -20°C. Avoid freeze / thaw cycles.
存储溶液	pH: 6.8 Preservative: 0.09% Sodium azide Constituents: 0.1% BSA, Tris buffered saline
纯度	Immunogen affinity purified
克隆	多克隆
同种型	IgG

应用

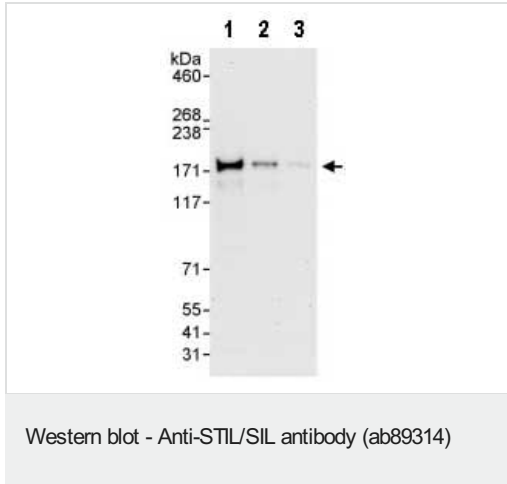
“应用说明”部分下显示的仅为推荐的起始稀释度;实际最佳的稀释度/浓度应由使用者检定。

应用	Ab评论	说明
ICC/IF		Use at an assay dependent concentration.
WB		1/2000 - 1/10000. Predicted molecular weight: 143 kDa.
IP		Use at 2-5 µg/mg of lysate.

靶标

功能	Immediate-early gene. Plays an important role in embryonic development as well as in cellular growth and proliferation; its long-term silencing affects cell survival and cell cycle distribution as well as decreases CDK1 activity correlated with reduced phosphorylation of CDK1. Play a role as a positive regulator of the sonic hedgehog pathway, acting downstream of PTCH1.
组织特异性	Expressed in all hematopoietic tissues and cell lines. Highly expressed in a variety of tumors characterized by increased mitotic activity with highest expression in lung cancer.
疾病相关	<p>Note=A chromosomal aberration involving STIL may be a cause of some T-cell acute lymphoblastic leukemias (T-ALL). A deletion at 1p32 between STIL and TAL1 genes leads to STIL/TAL1 fusion mRNA with STIL exon 1 splicing to TAL1 exon 3. As both STIL exon 1 and TAL1 exon 3 are 5'-untranslated exons, STIL/TAL1 fusion mRNA predicts a full length TAL1 protein under the control of the STIL promoter, leading to inappropriate TAL1 expression. In childhood T-cell malignancies (T-ALL), a type of defect such as STIL/TAL1 fusion is associated with a good prognosis. In cultured lymphocytes from healthy adults, STIL/TAL1 fusion mRNA may be detected after 7 days of culture.</p> <p>Defects in STIL are the cause of microcephaly primary type 7 (MCPH7) [MIM:612703]. Microcephaly is defined as a head circumference more than 3 standard deviations below the age-related mean. Brain weight is markedly reduced and the cerebral cortex is disproportionately small. Despite this marked reduction in size, the gyral pattern is relatively well preserved, with no major abnormality in cortical architecture. Primary microcephaly is further defined by the absence of other syndromic features or significant neurological deficits.</p>
翻译后修饰	Phosphorylated following the activation of the mitotic checkpoint.
细胞定位	Cytoplasm > cytosol.

图片



All lanes : Anti-STIL/SIL antibody (ab89314) at 0.04 µg/ml

Lane 1 : HeLa whole cell lysate at 50 µg

Lane 2 : HeLa whole cell lysate at 15 µg

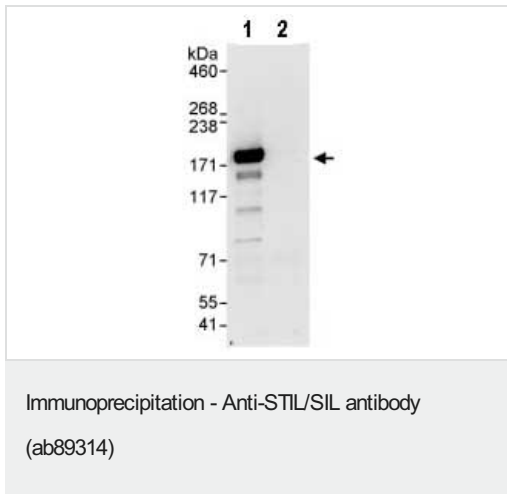
Lane 3 : HeLa whole cell lysate at 5 µg

Developed using the ECL technique.

Predicted band size: 143 kDa

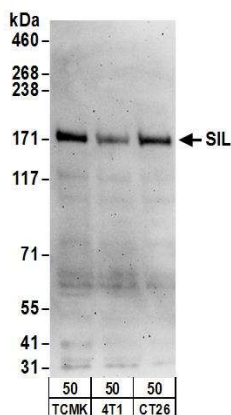
Observed band size: 175 kDa

Exposure time: 30 seconds



Detection of STIL/SIL in Immunoprecipitates of HeLa whole cell lysates (1 mg for IP, 20% of IP loaded) using ab89314 at 3 µg/mg lysate for IP (Lane 1) and at 1 µg/ml for subsequent Western blot detection. Lane 2 represents control IgG IP.

Detection: Chemiluminescence with exposure time of 30 seconds.



Western blot - Anti-STIL/SIL antibody (ab89314)

All lanes : Anti-STIL/SIL antibody (ab89314) at 0.1 µg/ml

Lane 1 : TCMK-1 cell lysate

Lane 2 : 4T1 cell lysate

Lane 3 : CT26.WT cell lysate

Lysates/proteins at 50 µg per lane.

Predicted band size: 143 kDa

Exposure time: 3 minutes

Please note: All products are "FOR RESEARCH USE ONLY. NOT FOR USE IN DIAGNOSTIC PROCEDURES"

Our Abpromise to you: Quality guaranteed and expert technical support

- Replacement or refund for products not performing as stated on the datasheet
- Valid for 12 months from date of delivery
- Response to your inquiry within 24 hours
- We provide support in Chinese, English, French, German, Japanese and Spanish
- Extensive multi-media technical resources to help you
- We investigate all quality concerns to ensure our products perform to the highest standards

If the product does not perform as described on this datasheet, we will offer a refund or replacement. For full details of the Abpromise, please visit <https://www.abcam.cn/abpromise> or contact our technical team.

Terms and conditions

- Guarantee only valid for products bought direct from Abcam or one of our authorized distributors