

### Anti-STIL/SIL antibody ab124322

#### 1 图像

#### 概述

产品名称	Anti-STIL/SIL 抗体
描述	兔多克隆抗体 to STIL/SIL
宿主	Rabbit
经测试应用	适用于: WB
种属反应性	与反应: Mouse, Rat
免疫原	Synthetic peptide corresponding to Mouse STIL/SIL aa 1050-1150 conjugated to keyhole limpet haemocyanin. (Peptide available as <a href="#">ab138803</a> )
阳性对照	This antibody gave a positive signal in the following tissue lysates: Mouse Thymus; Rat Thymus; Mouse Bone Marrow; Mouse Spleen; Rat Spleen.
常规说明	<p>The Life Science industry has been in the grips of a reproducibility crisis for a number of years. Abcam is leading the way in addressing this with our range of recombinant monoclonal antibodies and knockout edited cell lines for gold-standard validation. Please check that this product meets your needs before purchasing.</p> <p>If you have any questions, special requirements or concerns, please send us an inquiry and/or contact our Support team ahead of purchase. Recommended alternatives for this product can be found below, along with publications, customer reviews and Q&amp;As</p>

#### 性能

形式	Liquid
存放说明	Shipped at 4°C. Store at +4°C short term (1-2 weeks). Upon delivery aliquot. Store at -20°C or -80°C. Avoid freeze / thaw cycle.
存储溶液	<p>pH: 7.40</p> <p>Preservative: 0.02% Sodium azide</p> <p>Constituent: PBS</p> <p>Batches of this product that have a concentration &lt; 1mg/ml may have BSA added as a stabilising agent. If you would like information about the formulation of a specific lot, please contact our scientific support team who will be happy to help.</p>
纯度	Immunogen affinity purified

克隆

多克隆

同种型

IgG

应用

The Abpromise guarantee      **Abpromise™**承诺保证使用ab124322于以下的经测试应用

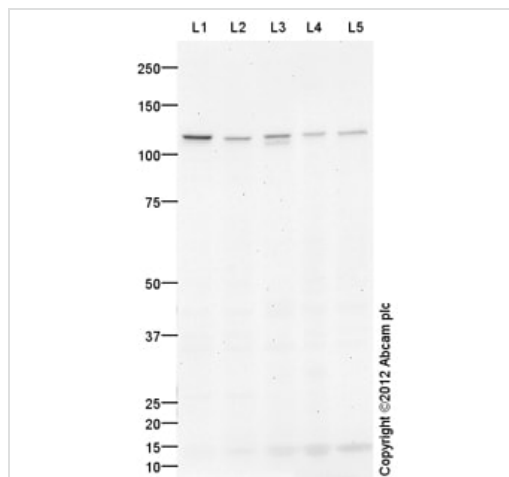
“应用说明”部分 下显示的仅为推荐的起始稀释度;实际最佳的稀释度/浓度应由使用者检定。

应用	Ab评论	说明
WB		Use a concentration of 1 µg/ml. Detects a band of approximately 125 kDa (predicted molecular weight: 138 kDa).

靶标

功能	Immediate-early gene. Plays an important role in embryonic development as well as in cellular growth and proliferation; its long-term silencing affects cell survival and cell cycle distribution as well as decreases CDK1 activity correlated with reduced phosphorylation of CDK1. Play a role as a positive regulator of the sonic hedgehog pathway, acting downstream of PTCH1.
组织特异性	Expressed in all hematopoietic tissues and cell lines. Highly expressed in a variety of tumors characterized by increased mitotic activity with highest expression in lung cancer.
疾病相关	<p>Note=A chromosomal aberration involving STIL may be a cause of some T-cell acute lymphoblastic leukemias (T-ALL). A deletion at 1p32 between STIL and TAL1 genes leads to STIL/TAL1 fusion mRNA with STIL exon 1 slicing to TAL1 exon 3. As both STIL exon 1 and TAL1 exon 3 are 5'-untranslated exons, STIL/TAL1 fusion mRNA predicts a full length TAL1 protein under the control of the STIL promoter, leading to inappropriate TAL1 expression. In childhood T-cell malignancies (T-ALL), a type of defect such as STIL/TAL1 fusion is associated with a good prognosis. In cultured lymphocytes from healthy adults, STIL/TAL1 fusion mRNA may be detected after 7 days of culture.</p> <p>Defects in STIL are the cause of microcephaly primary type 7 (MCPH7) [MIM:612703]. Microcephaly is defined as a head circumference more than 3 standard deviations below the age-related mean. Brain weight is markedly reduced and the cerebral cortex is disproportionately small. Despite this marked reduction in size, the gyral pattern is relatively well preserved, with no major abnormality in cortical architecture. Primary microcephaly is further defined by the absence of other syndromic features or significant neurological deficits.</p>
翻译后修饰	Phosphorylated following the activation of the mitotic checkpoint.
细胞定位	Cytoplasm > cytosol.

图片



Western blot - Anti-STIL/SIL antibody (ab124322)

**All lanes :** Anti-STIL/SIL antibody (ab124322) at 1 µg/ml

**Lane 1 :** Thymus (Mouse) Tissue Lysate

**Lane 2 :** Thymus (Rat) Tissue Lysate

**Lane 3 :** Mouse Bone Marrow Tissue Lysate

**Lane 4 :** Spleen (Mouse) Tissue Lysate

**Lane 5 :** Spleen (Rat) Tissue Lysate

Lysates/proteins at 10 µg per lane.

### Secondary

**All lanes :** Goat Anti-Rabbit IgG H&L (HRP) preadsorbed (**ab97080**) at 1/5000 dilution

Developed using the ECL technique.

Performed under reducing conditions.

**Predicted band size:** 138 kDa

**Observed band size:** 125 kDa

**Additional bands at:** 14 kDa. We are unsure as to the identity of these extra bands.

**Exposure time:** 8 minutes

**Please note:** All products are "FOR RESEARCH USE ONLY. NOT FOR USE IN DIAGNOSTIC PROCEDURES"

### Our Abpromise to you: Quality guaranteed and expert technical support

- Replacement or refund for products not performing as stated on the datasheet
- Valid for 12 months from date of delivery
- Response to your inquiry within 24 hours
- We provide support in Chinese, English, French, German, Japanese and Spanish
- Extensive multi-media technical resources to help you
- We investigate all quality concerns to ensure our products perform to the highest standards

If the product does not perform as described on this datasheet, we will offer a refund or replacement. For full details of the Abpromise, please visit <https://www.abcam.cn/abpromise> or contact our technical team.

## Terms and conditions

---

- Guarantee only valid for products bought direct from Abcam or one of our authorized distributors