

### Anti-STAT6 antibody [E265] ab32108

敲除验证
重组
RabMAb

[3 References](#)
[6 图像](#)

#### 概述

<b>产品名称</b>	Anti-STAT6抗体[E265]
<b>描述</b>	兔单克隆抗体[E265] to STAT6
<b>宿主</b>	Rabbit
<b>特异性</b>	ab32108 recognises Stat-6. It does not cross react with other STAT family members
<b>经测试应用</b>	<b>适用于:</b> WB, IP, Flow Cyt (Intra), ICC/IF <b>不适用于:</b> IHC
<b>种属反应性</b>	<b>与反应:</b> Human
<b>免疫原</b>	Synthetic peptide within Human STAT6 aa 800-900 (C terminal). The exact sequence is proprietary.
<b>阳性对照</b>	WB: HeLa and Raji cells. ICC/IF: Raji cells. Flow Cyt (intra): HeLa cells IP: HeLa cell lysates
<b>常规说明</b>	<p>This product is a recombinant monoclonal antibody, which offers several advantages including:</p> <ul style="list-style-type: none"> <li>- High batch-to-batch consistency and reproducibility</li> <li>- Improved sensitivity and specificity</li> <li>- Long-term security of supply</li> <li>- Animal-free production</li> </ul> <p>For more information <a href="#">see here</a>.</p> <p>Our RabMAb<sup>®</sup> technology is a patented hybridoma-based technology for making rabbit monoclonal antibodies. For details on our patents, please refer to <a href="#">RabMAb<sup>®</sup> patents</a>.</p> <p>Mouse, Rat: We have preliminary internal testing data to indicate this antibody may not react with these species. Please contact us for more information.</p>

#### 性能

<b>形式</b>	Liquid
<b>存放说明</b>	Shipped at 4°C. Upon delivery aliquot and store at -20°C. Avoid freeze / thaw cycles.
<b>存储溶液</b>	pH: 7.20 Preservative: 0.01% Sodium azide Constituents: 49% PBS, 50% Glycerol (glycerin, glycerine), 0.05% BSA
<b>纯度</b>	Protein A purified

克隆	单克隆
克隆编号	E265
同种型	IgG

## 应用

**The Abpromise guarantee** **Abpromise™** 承诺保证使用ab32108于以下的经测试应用

“应用说明”部分下显示的仅为推荐的起始稀释度;实际最佳的稀释度/浓度应由使用者检定。

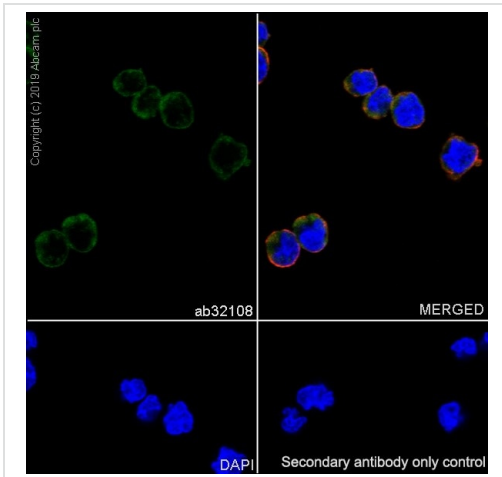
应用	Ab评论	说明
WB		1/5000. Detects a band of approximately 100 kDa (predicted molecular weight: 94 kDa).
IP		1/50.
Flow Cyt (Intra)		1/100. <b>ab172730</b> - Rabbit monoclonal IgG, is suitable for use as an isotype control with this antibody.
ICC/IF		1/250 - 1/500.

应用说明 Is unsuitable for IHC.

## 靶标

功能	Carries out a dual function: signal transduction and activation of transcription. Involved in interleukin-4 signalling.
序列相似性	Belongs to the transcription factor STAT family. Contains 1 SH2 domain.
翻译后修饰	Tyrosine phosphorylated following stimulation by IL-4 and IL-3.
细胞定位	Cytoplasm. Nucleus. Translocated into the nucleus in response to phosphorylation.

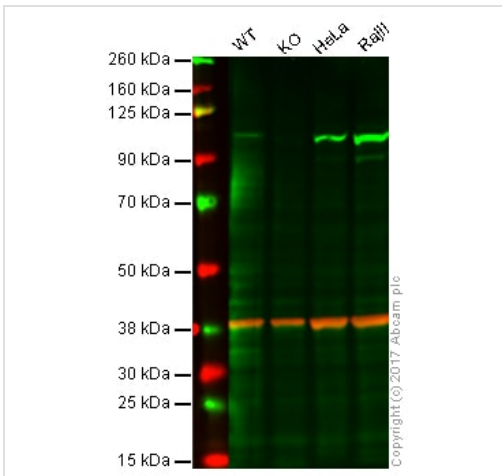
## 图片



Immunocytochemistry/ Immunofluorescence - Anti-STAT6 antibody [E265] (ab32108)

Confocal image showing cytoplasmic staining in Raji cells.

Immunocytochemistry/immunofluorescence analysis of Raji (human Burkitt's lymphoma B lymphocyte) cells labelling STAT6 with ab32108 at 10 µg/mL. Cells were fixed with 4% paraformaldehyde and permeabilized with 0.1% Triton X-100. **ab150077** Goat Anti-Rabbit IgG H&L (Alexa Fluor® 488) was used as a secondary antibody at 2 µg/mL. Cells were counterstained with **ab195889** Anti-alpha Tubulin mouse monoclonal antibody - Microtubule Marker (Alexa Fluor® 594) at 1/200 dilution (red). Nuclear DNA was labelled with DAPI (blue).



Western blot - Anti-STAT6 antibody [E265] (ab32108)

**Lane 1:** Wild-type HAP1 whole cell lysate (20 µg)

**Lane 2:** STAT6 knockout HAP1 whole cell lysate (20 µg)

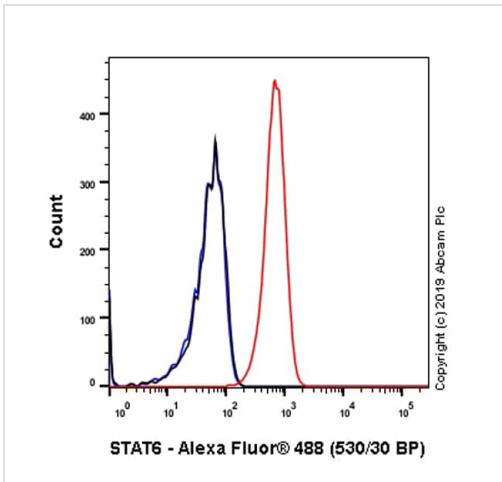
**Lane 3:** HeLa whole cell lysate (20 µg)

**Lane 4:** Raji whole cell lysate (20 µg)

**Lanes 1 - 4:** Merged signal (red and green). Green - ab32108 observed at 94 kDa. Red - loading control, **ab9484**, observed at 37 kDa.

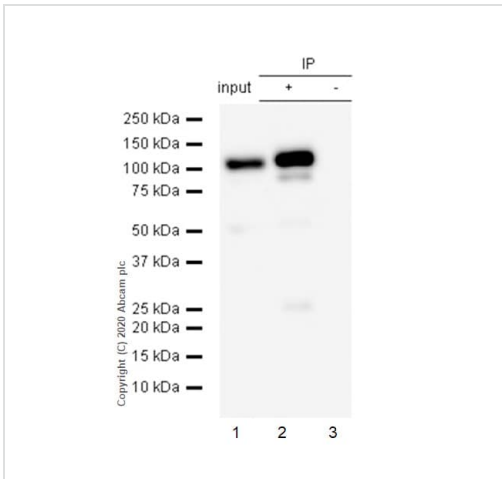
ab32108 was shown to specifically react with STAT6 in wild-type HAP1 cells as signal was lost in STAT6 knockout cells. Wild-type and STAT6 knockout samples were subjected to SDS-PAGE.

Ab32108 and **ab9484** (Mouse anti-GAPDH loading control) were incubated overnight at 4°C at 1/5000 dilution and 1/20000 dilution respectively. Blots were developed with Goat anti-Rabbit IgG H&L (IRDye® 800CW) preabsorbed **ab216773** and Goat anti-Mouse IgG H&L (IRDye® 680RD) preabsorbed **ab216776** secondary antibodies at 1/20000 dilution for 1 hour at room temperature before imaging.



Flow Cytometry (Intracellular) - Anti-STAT6 antibody [E265] (ab32108)

Intracellular Flow Cytometry analysis of HeLa (Human cervix adenocarcinoma epithelial cell) cells labeling STAT6 with purified ab32108 at 1/100 dilution (10 µg/mL) (Red). Cells were fixed with 4% Paraformaldehyde and permeabilised with 90% Methanol. A Goat anti rabbit IgG (Alexa Fluor® 488, [ab150077](#)) secondary antibody was used at 1/2000. Isotype control - Rabbit monoclonal IgG (Black). Unlabeled control - Cells without incubation with primary antibody and secondary antibody (Blue).



Immunoprecipitation - Anti-STAT6 antibody [E265] (ab32108)

Purified ab32108 at 1/50 dilution (2µg) immunoprecipitating STAT6 in HeLa whole cell lysate.

Lane 1 (input): HeLa (Human cervix adenocarcinoma epithelial cell) whole cell lysate 10µg

Lane 2 (+): ab32108 + HeLa whole cell lysate.

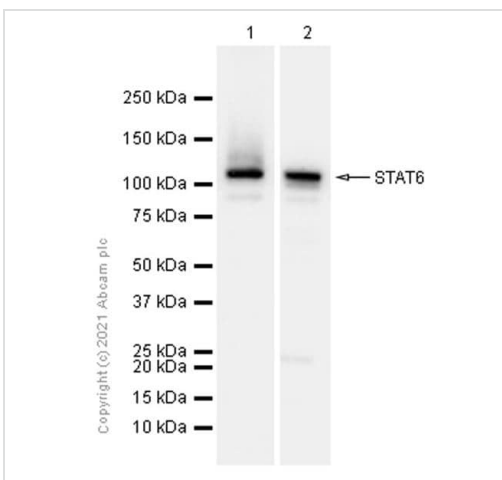
Lane 3 (-): Rabbit monoclonal IgG ([ab172730](#)) instead of ab32108 in HeLa whole cell lysate.

VeriBlot for IP Detection Reagent (HRP) ([ab131366](#)) (1/1000 dilution) was used for Western blotting.

Blocking Buffer and concentration: 5% NFDm/TBST.

Diluting buffer and concentration: 5% NFDm/TBST.

Observed band size: 100 kDa



Western blot - Anti-STAT6 antibody [E265] (ab32108)

**All lanes** : Anti-STAT6 antibody [E265] (ab32108) at 1/10000 dilution

**Lane 1** : HeLa (Human cervix adenocarcinoma epithelial cell) whole cell lysate

**Lane 2** : Raji (Human Burkitt's lymphoma B lymphocyte) whole cell lysate

Lysates/proteins at 15 µg per lane.

#### Secondary

**All lanes** : Goat Anti-Rabbit IgG H&L (HRP) ([ab97051](#)) at 1/20000 dilution

**Predicted band size:** 94 kDa

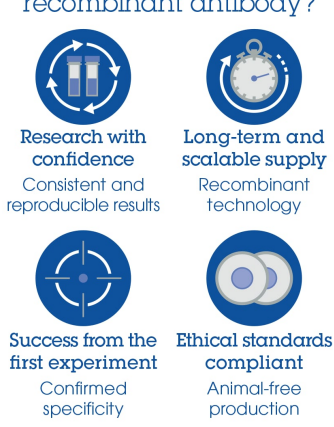
**Observed band size:** 110,81 kDa

Blocking and diluting buffer and concentration: 5% NFDM/TBST.

Exposure time: Lane 1. 7 seconds ; Lane 2. 3 seconds

This antibody recognizes three isoforms of STAT6, isoform 1 (110kDa), isoform 3 (81kDa), which is consistent with the Uniprot annotation.

Why choose a recombinant antibody?



- Research with confidence**  
Consistent and reproducible results
- Long-term and scalable supply**  
Recombinant technology
- Success from the first experiment**  
Confirmed specificity
- Ethical standards compliant**  
Animal-free production

Anti-STAT6 antibody [E265] (ab32108)

**Please note:** All products are "FOR RESEARCH USE ONLY. NOT FOR USE IN DIAGNOSTIC PROCEDURES"

### Our Abpromise to you: Quality guaranteed and expert technical support

- Replacement or refund for products not performing as stated on the datasheet
- Valid for 12 months from date of delivery
- Response to your inquiry within 24 hours
- We provide support in Chinese, English, French, German, Japanese and Spanish
- Extensive multi-media technical resources to help you
- We investigate all quality concerns to ensure our products perform to the highest standards

If the product does not perform as described on this datasheet, we will offer a refund or replacement. For full details of the Abpromise, please visit <https://www.abcam.cn/abpromise> or contact our technical team.

### Terms and conditions

- Guarantee only valid for products bought direct from Abcam or one of our authorized distributors