

Anti-STAT5b (phospho S731) antibody ab52211

[7 References](#) [3 图像](#)

概述

产品名称	Anti-STAT5b (phospho S731)抗体
描述	兔多克隆抗体to STAT5b (phospho S731)
宿主	Rabbit
经测试应用	适用于: ICC/IF, WB, IHC-P
种属反应性	与反应: Mouse, Human
免疫原	Synthetic peptide corresponding to Human STAT5b aa 650-750 (phospho S731). Database link: P51692

常规说明

ab52211 detects endogenous levels of STAT5B but only when phosphorylated at serine 731 (human) or serine 730 (mouse and rat).

The Life Science industry has been in the grips of a reproducibility crisis for a number of years. Abcam is leading the way in addressing this with our range of recombinant monoclonal antibodies and knockout edited cell lines for gold-standard validation. Please check that this product meets your needs before purchasing.

If you have any questions, special requirements or concerns, please send us an inquiry and/or contact our Support team ahead of purchase. Recommended alternatives for this product can be found below, along with publications, customer reviews and Q&As

性能

形式	Liquid
存放说明	Shipped at 4°C. Store at 4°C (up to 6 months). Store at -20°C.
存储溶液	pH: 7.40 Preservative: 0.02% Sodium azide Constituents: PBS, 50% Glycerol (glycerin, glycerine), 0.87% Sodium chloride
纯度	Without Mg+2 and Ca+2 Immunogen affinity purified
Primary antibody说明	ab52211 detects endogenous levels of STAT5B but only when phosphorylated at serine 731 (human) or serine 730 (mouse and rat).
克隆	多克隆

同种型

IgG

应用

The Abpromise guarantee **Abpromise™** 承诺保证使用 ab52211 于以下的经测试应用

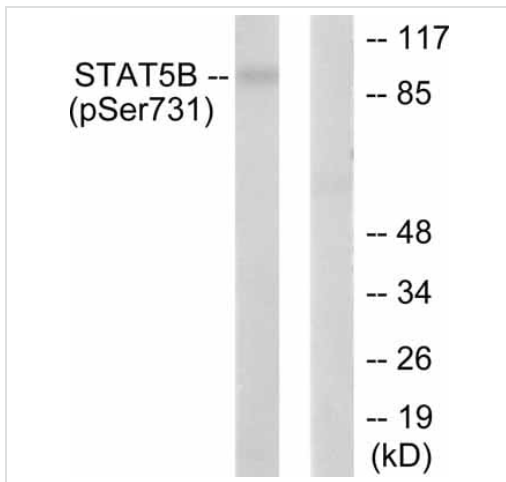
“应用说明”部分 下显示的仅为推荐的起始稀释度;实际最佳的稀释度/浓度应由使用者检定。

应用	Ab评论	说明
ICC/IF		Use a concentration of 1 - 5 µg/ml.
WB		1/500 - 1/1000. Detects a band of approximately 90 kDa (predicted molecular weight: 90 kDa).
IHC-P		Use at an assay dependent concentration.

靶标

功能	Carries out a dual function: signal transduction and activation of transcription. Mediates cellular responses to the cytokine KITLG/SCF and other growth factors. Binds to the GAS element and activates PRL-induced transcription.
疾病相关	Growth hormone insensitivity with immunodeficiency
序列相似性	Belongs to the transcription factor STAT family. Contains 1 SH2 domain.
翻译后修饰	Tyrosine phosphorylated in response to signaling via activated KIT, resulting in translocation to the nucleus. Tyrosine phosphorylated in response to signaling via activated FLT3; wild-type FLT3 results in much weaker phosphorylation than constitutively activated mutant FLT3. Alternatively, can be phosphorylated by JAK2. Phosphorylation at Tyr-699 by PTK6 or HCK leads to an increase of its transcriptional activity. Dephosphorylation on tyrosine residues by PTPN2 negatively regulates prolactin signaling pathway.
细胞定位	Cytoplasm. Nucleus. Translocated into the nucleus in response to phosphorylation.

图片



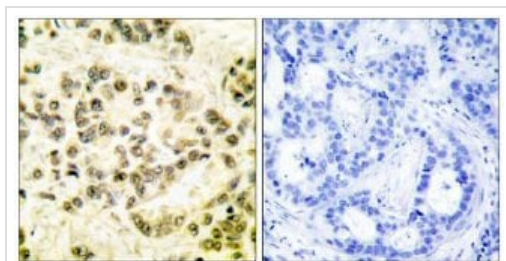
Western blot - Anti-STAT5b (phospho S731) antibody (ab52211)

All lanes : Anti-STAT5b (phospho S731) antibody (ab52211) at 1/500 dilution

Lane 1 : Extracts from RAW264.7 cells treated with EGF (200ng/ml, 30min)

Lane 2 : Extracts from RAW264.7 cells treated with EGF (200ng/ml, 30min), ab52211 was pre-incubated with immunising (blocking) peptide

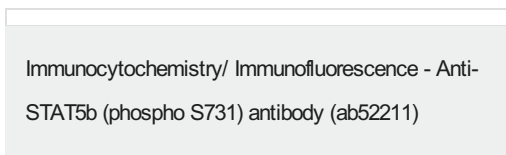
Predicted band size: 90 kDa



P-peptide - +

Immunohistochemistry (Formalin/PFA-fixed paraffin-embedded sections) - Anti-STAT5b (phospho S731) antibody (ab52211)

Paraffin-embedded human breast carcinoma tissue stained for STAT5b (phospho S731), using ab52211 (1/100). The right hand panel represents a negative control where ab52211 was pre-incubated with the immunising (blocking) peptide.



Immunocytochemistry/ Immunofluorescence - Anti-STAT5b (phospho S731) antibody (ab52211)

ICC/IF image of ab52211 stained HeLa cells. The cells were 4% PFA fixed (10 min) and then incubated in 1%BSA / 10% normal goat serum / 0.3M glycine in 0.1% PBS-Tween for 1h to permeabilise the cells and block non-specific protein-protein interactions. The cells were then incubated with the antibody (ab52211, 1µg/ml) overnight at +4°C. The secondary antibody (green) was Alexa Fluor® 488 goat anti-rabbit IgG (H+L) used at a 1/1000 dilution for 1h. Alexa Fluor® 594 WGA was used to label plasma membranes (red) at a 1/200 dilution for 1h. DAPI was used to stain the cell nuclei (blue) at a concentration of 1.43µM.

Please note: All products are "FOR RESEARCH USE ONLY. NOT FOR USE IN DIAGNOSTIC PROCEDURES"

Our Abpromise to you: Quality guaranteed and expert technical support

- Replacement or refund for products not performing as stated on the datasheet
- Valid for 12 months from date of delivery
- Response to your inquiry within 24 hours

- We provide support in Chinese, English, French, German, Japanese and Spanish
- Extensive multi-media technical resources to help you
- We investigate all quality concerns to ensure our products perform to the highest standards

If the product does not perform as described on this datasheet, we will offer a refund or replacement. For full details of the Abpromise, please visit <https://www.abcam.cn/abpromise> or contact our technical team.

Terms and conditions

- Guarantee only valid for products bought direct from Abcam or one of our authorized distributors