




# Anti-STAT5 antibody ab16276

**16 References**   **2 图像**

### 概述

产品名称	Anti-STAT5抗体
描述	兔多克隆抗体to STAT5
宿主	Rabbit
特异性	This antibody does not cross react with any other STATs or related proteins
经测试应用	适用于: ICC/IF, WB
种属反应性	与反应: Human 预测可用于: Sheep, Cow 
免疫原	Synthetic peptide: ATIISEQQAKSLLKNENTR , corresponding to amino acids 371-389 of Human STAT5.  <a href="#">Run BLAST with</a>  <a href="#">Run BLAST with</a>
阳性对照	CTLL cell lysate.
常规说明	<p>The Life Science industry has been in the grips of a reproducibility crisis for a number of years. Abcam is leading the way in addressing this with our range of recombinant monoclonal antibodies and knockout edited cell lines for gold-standard validation. Please check that this product meets your needs before purchasing.</p> <p>If you have any questions, special requirements or concerns, please send us an inquiry and/or contact our Support team ahead of purchase. Recommended alternatives for this product can be found below, along with publications, customer reviews and Q&amp;As</p>

### 性能

形式	Liquid
存放说明	Shipped at 4°C. Upon delivery aliquot and store at -20°C. Avoid freeze / thaw cycles.
存储溶液	pH: 7.3 Preservative: 0.05% Sodium azide Constituents: PBS, 0.1% BSA  PBS is Magnesium and Calcium free
纯度	Immunogen affinity purified

克隆

多克隆

同种型

IgG

应用

The Abpromise guarantee      **Abpromise™**承诺保证使用ab16276于以下的经测试应用

“应用说明”部分 下显示的仅为推荐的起始稀释度;实际最佳的稀释度/浓度应由使用者检定。

应用	Ab评论	说明
ICC/IF		Use a concentration of 1 µg/ml.
WB		Use a concentration of 1 µg/ml. Predicted molecular weight: 90 kDa.

靶标

功能

Carries out a dual function: signal transduction and activation of transcription. Binds to the GAS element and activates PRL-induced transcription.

序列相似性

Belongs to the transcription factor STAT family.  
Contains 1 SH2 domain.

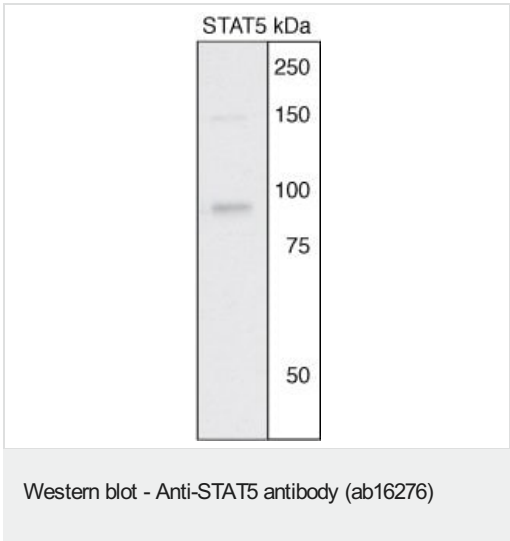
翻译后修饰

Tyrosine phosphorylated in response to IL-2, IL-3, IL-7, IL-15, GM-CSF, growth hormone, prolactin, erythropoietin and thrombopoietin. Tyrosine phosphorylation is required for DNA-binding activity and dimerization. Serine phosphorylation is also required for maximal transcriptional activity.

细胞定位

Cytoplasm. Nucleus. Translocated into the nucleus in response to phosphorylation.

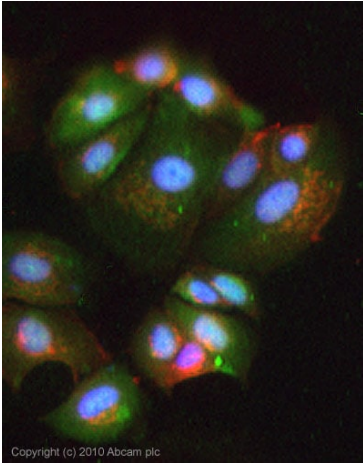
图片



Anti-STAT5 antibody (ab16276) + SK-BR-3 Human adenocarcinoma cell line

**Secondary**  
HRP conjugated goat anti-rabbit

**Predicted band size:** 90 kDa



ICC/IF image of **ab71498** stained MCF7 cells. The cells were 4% PFA fixed (10 min) and then incubated in 1%BSA / 10% normal goat serum / 0.3M glycine in 0.1% PBS-Tween for 1h to permeabilise the cells and block non-specific protein-protein interactions. The cells were then incubated with the antibody (ab16276, 1µg/ml) overnight at +4°C. The secondary antibody (green) was Alexa Fluor® 488 goat anti-rabbit IgG (H+L) used at a 1/1000 dilution for 1h. Alexa Fluor® 594 WGA was used to label plasma membranes (red) at a 1/200 dilution for 1h. DAPI was used to stain the cell nuclei (blue) at a concentration of 1.43µM.

Immunocytochemistry/ Immunofluorescence - Anti-STAT5 antibody (ab16276)

**Please note:** All products are "FOR RESEARCH USE ONLY. NOT FOR USE IN DIAGNOSTIC PROCEDURES"

### Our Abpromise to you: Quality guaranteed and expert technical support

- Replacement or refund for products not performing as stated on the datasheet
- Valid for 12 months from date of delivery
- Response to your inquiry within 24 hours
- We provide support in Chinese, English, French, German, Japanese and Spanish
- Extensive multi-media technical resources to help you
- We investigate all quality concerns to ensure our products perform to the highest standards

If the product does not perform as described on this datasheet, we will offer a refund or replacement. For full details of the Abpromise, please visit <https://www.abcam.cn/abpromise> or contact our technical team.

### Terms and conditions

- Guarantee only valid for products bought direct from Abcam or one of our authorized distributors