

Anti-STAT4 (phospho Y693) antibody ab28815

★★★★★ [1 Abreviews](#) [10 References](#) [2 图像](#)

概述

产品名称	Anti-STAT4 (phospho Y693)抗体
描述	兔多克隆抗体to STAT4 (phospho Y693)
宿主	Rabbit
经测试应用	适用于: IP, WB, IHC-P, ELISA
种属反应性	与反应: Mouse, Human
免疫原	Synthetic peptide corresponding to Human STAT4 (phospho Y693). Human STAT4 around the phosphorylation site of Tyr693.
常规说明	<p>The Life Science industry has been in the grips of a reproducibility crisis for a number of years. Abcam is leading the way in addressing this with our range of recombinant monoclonal antibodies and knockout edited cell lines for gold-standard validation. Please check that this product meets your needs before purchasing.</p> <p>If you have any questions, special requirements or concerns, please send us an inquiry and/or contact our Support team ahead of purchase. Recommended alternatives for this product can be found below, along with publications, customer reviews and Q&As</p>

性能

形式	Liquid
存放说明	Shipped at 4°C. Store at +4°C short term (1-2 weeks). Upon delivery aliquot. Store at -20°C or -80°C. Avoid freeze / thaw cycle.
存储溶液	<p>pH: 7.40</p> <p>Preservative: 0.02% Sodium azide</p> <p>Constituents: PBS, 50% Glycerol, 0.87% Sodium chloride</p>
纯度	Without Mg ²⁺ and Ca ²⁺
纯化说明	Immunogen affinity purified
克隆	多克隆
同种型	IgG

应用

The Abpromise guarantee

Abpromise™承诺保证使用ab28815于以下的经测试应用

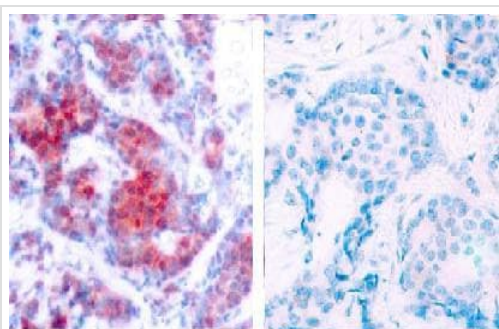
“应用说明”部分 下显示的仅为推荐的起始稀释度;实际最佳的稀释度/浓度应由使用者检定。

应用	Ab评论	说明
IP		Use at an assay dependent concentration.
WB		1/500 - 1/1000. Predicted molecular weight: 85 kDa.
IHC-P	★★★★★ (1)	1/50 - 1/100.
ELISA		Use at an assay dependent concentration.

靶标

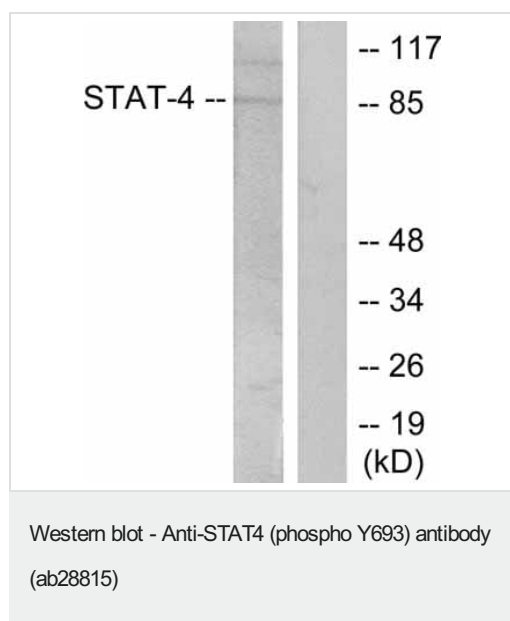
功能	Carries out a dual function: signal transduction and activation of transcription. Involved in IL12 signaling.
疾病相关	Systemic lupus erythematosus 11 Rheumatoid arthritis
序列相似性	Belongs to the transcription factor STAT family. Contains 1 SH2 domain.
翻译后修饰	Tyrosine phosphorylated. Serine phosphorylation is also required for maximal transcriptional activity.
细胞定位	Cytoplasm. Nucleus. Translocated into the nucleus in response to phosphorylation.

图片



ab28815, staining human STAT4 in breast carcinoma by immunohistochemistry, paraffin embedded tissue. left: Using STAT4 antibody (ab28815); right: The same antibody preincubated with synthesized phosphopeptide.

Immunohistochemistry (Formalin/PFA-fixed paraffin-embedded sections) - Anti-STAT4 (phospho Y693) antibody (ab28815)



All lanes : Anti-STAT4 (phospho Y693) antibody (ab28815)

Lane 1 : HeLa cell lysate (cells treated with IL4)

Lane 2 : HeLa cell lysate (untreated)

Predicted band size: 85 kDa

Please note: All products are "FOR RESEARCH USE ONLY. NOT FOR USE IN DIAGNOSTIC PROCEDURES"

Our Abpromise to you: Quality guaranteed and expert technical support

- Replacement or refund for products not performing as stated on the datasheet
- Valid for 12 months from date of delivery
- Response to your inquiry within 24 hours
- We provide support in Chinese, English, French, German, Japanese and Spanish
- Extensive multi-media technical resources to help you
- We investigate all quality concerns to ensure our products perform to the highest standards

If the product does not perform as described on this datasheet, we will offer a refund or replacement. For full details of the Abpromise, please visit <https://www.abcam.cn/abpromise> or contact our technical team.

Terms and conditions

- Guarantee only valid for products bought direct from Abcam or one of our authorized distributors