


### Anti-ST14 antibody ab228681

#### 1 图像

#### 概述

产品名称	Anti-ST14抗体
描述	兔多克隆抗体to ST14
宿主	Rabbit
经测试应用	适用于: WB
种属反应性	与反应: Mouse 预测可用于: Rat 
免疫原	Synthetic peptide within Mouse ST14 (internal sequence). The exact sequence is proprietary. Conjugated to a carrier protein. Database link: <a href="#">P56677</a>
阳性对照	WB: Mouse kidney whole cell lysate.
常规说明	<p>The Life Science industry has been in the grips of a reproducibility crisis for a number of years. Abcam is leading the way in addressing this with our range of recombinant monoclonal antibodies and knockout edited cell lines for gold-standard validation. Please check that this product meets your needs before purchasing.</p> <p>If you have any questions, special requirements or concerns, please send us an inquiry and/or contact our Support team ahead of purchase. Recommended alternatives for this product can be found below, along with publications, customer reviews and Q&amp;As</p>

#### 性能

形式	Liquid
存放说明	Shipped at 4°C. Store at +4°C short term (1-2 weeks). Upon delivery aliquot. Store at -20°C long term. Avoid freeze / thaw cycle.
存储溶液	pH: 7.00 Preservative: 0.01% Thimerosal (merthiolate) Constituents: 1.21% Tris, 0.75% Glycine, 10% Glycerol (glycerin, glycerine)
纯度	Immunogen affinity purified
克隆	多克隆
同种型	IgG

应用

**The Abpromise guarantee**      **Abpromise™**承诺保证使用ab228681于以下的经测试应用

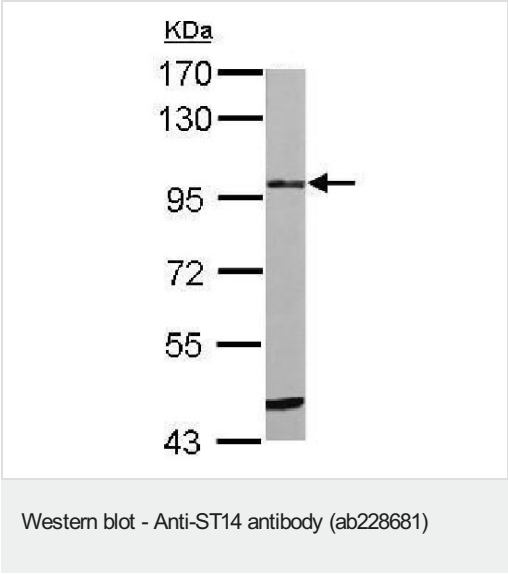
“应用说明”部分 下显示的仅为推荐的起始稀释度;实际最佳的稀释度/浓度应由使用者检定。

应用	Ab评论	说明
WB		1/500 - 1/3000. Predicted molecular weight: 95 kDa.

靶标

功能	Degrades extracellular matrix. Proposed to play a role in breast cancer invasion and metastasis. Exhibits trypsin-like activity as defined by cleavage of synthetic substrates with Arg or Lys as the P1 site.
疾病相关	Defects in ST14 are a cause of ichthyosis autosomal recessive with hypotrichosis (ARIH) [MIM:610765]. ARIH is a skin disorder characterized by congenital ichthyosis associated with the presence of less than the normal amount of hair.
序列相似性	Belongs to the peptidase S1 family. Contains 2 CUB domains. Contains 4 LDL-receptor class A domains. Contains 1 peptidase S1 domain.
细胞定位	Membrane.

图片



Anti-ST14 antibody (ab228681) at 1/1000 dilution + Mouse kidney whole cell lysate at 50 µg

Developed using the ECL technique.

**Predicted band size:** 95 kDa

7.5% SDS-PAGE

**Please note:** All products are "FOR RESEARCH USE ONLY. NOT FOR USE IN DIAGNOSTIC PROCEDURES"

**Our Abpromise to you: Quality guaranteed and expert technical support**

- Replacement or refund for products not performing as stated on the datasheet

- Valid for 12 months from date of delivery
- Response to your inquiry within 24 hours
- We provide support in Chinese, English, French, German, Japanese and Spanish
- Extensive multi-media technical resources to help you
- We investigate all quality concerns to ensure our products perform to the highest standards

If the product does not perform as described on this datasheet, we will offer a refund or replacement. For full details of the Abpromise, please visit <https://www.abcam.cn/abpromise> or contact our technical team.

#### **Terms and conditions**

---

- Guarantee only valid for products bought direct from Abcam or one of our authorized distributors